

BALTIMORE COUNTY PUBLIC SCHOOLS

DATE: November 8, 2011

TO: **BOARD OF EDUCATION**

FROM: Dr. Joe A. Hairston, Superintendent

SUBJECT: **REPORT ON SEPTEMBER 30 ENROLLMENT, PROJECTIONS,
AND CAPACITIES**

ORIGINATOR: Renee A. Foose, Deputy Superintendent

**RESOURCE
PERSON(S):** Kara Calder, Executive Director, Planning and Support Operations
Ghassan Shah, Planning Administrator, Office of Strategic Planning

INFORMATION

That the Board of Education be informed of the official
September 30, 2010 Enrollments, Projections, and Capacities.

* * * * *

Attachment I – Executive Summary
Attachment II – PowerPoint
Attachment III – Enrollments, Projections, and Capacities databook

September 30, 2011
Enrollments, Projections, and Capacities Report
Executive Summary

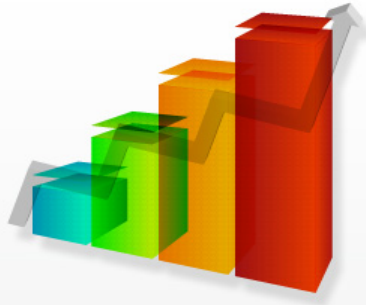
The objective of the strategic planning process of Baltimore County Public Schools is to plan for and help the school system manage enrollment growth, decline, and programmatic changes. Strategic planning activities are managed through the Office of Strategic Planning within the Department of Planning and Support Operations. As a function of the Business Services Division of the school system, strategic planning activities are collaborative efforts among departments within the division as together we fulfill the BCPS Service Model and strive to achieve Goal 8 of the Blueprint for Progress: *all students will receive a quality education through the efficient and effective use of resources and the delivery of business services.*

In fulfillment of its responsibilities, the Office of Strategic Planning facilitates the production of the annual Enrollment, Capacity, and Projections report. This report documents the official school system and individual school capacity and enrollment as of September 30, 2011. It also provides a comparison of projections with actual enrollment for 2007-2011.

The 2010 systemwide student enrollment as of September 30, 2011 is 105,315. This is just slightly above the systemwide projected enrollment for the year (105,195) and represents a projection accuracy of 99.89% in fulfillment of Blueprint for Progress Goal 8, Indicator 8.5. BCPS projection accuracy has met the Blueprint for Progress standard of 99.0% for the past six years. Official enrollment and projection data is used across the school system in important forecasting and decision making processes including establishing the school system budget and advancing the capital improvement program.

Total student enrollment increased by 984 students from 2010 to 2011, fulfilling the anticipated and projected trend of a gradual increase in student enrollment over the next five to ten years.

As projected and presented in previous reports, total enrollment at the elementary school level now exceeds all available capacity by 58 students (100.12%). Among individual schools, 54 elementary schools exceed 100% capacity (up from 39 in 2010) and 12 exceed 120% capacity. Total enrollment at the middle school level is at 78.65% of total capacity and at the high school level is 90.49% of total capacity. State rated capacity does not include relocatable classroom units, which are utilized as part of the school system's overall capacity relief program.



Understanding the Annual Enrollments, Projections, and Capacities Report

BCPS September 30, 2011 Enrollments, Projections, and Capacities Report



*"Our children are our future.
We must teach them well.
They deserve the best."*

Joe A. Hairston, Superintendent



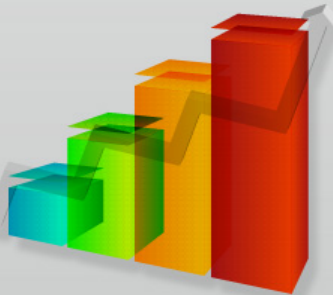
Presented by the
Baltimore County Public Schools
Office of Strategic Planning
November 8, 2011

Prepared by the Baltimore County Public Schools
Office of Strategic Planning
November 2011

Report History



- Produced each year from 2005 to the present.
- The report contains:
 - Official September 30 enrollments
 - Latest state rated capacity adjustments
 - Enrollment comparison to projections
 - Thematic maps
- Provides a factual basis for discussions with all stakeholders on enrollment, capacity, and projections.



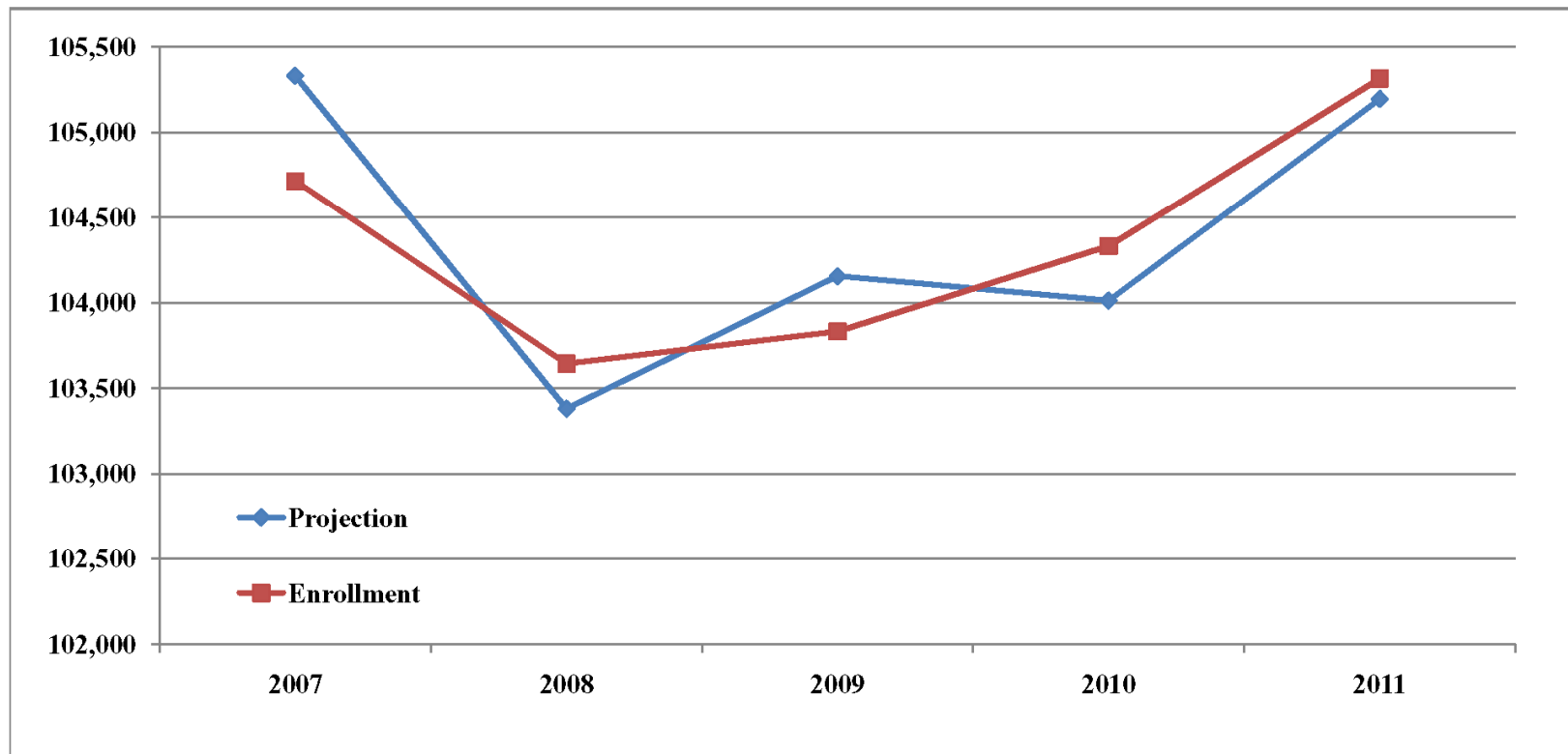
Projection Accuracy

BCPS 1 Year Enrollment Projection Accuracy

Year	Projection	Official Enrollment	+/- Projection	Accuracy	Indicator Met?
2007	105,330	104,714	-616	99.42%	yes
2008	103,380	103,643	263	99.75%	yes
2009	104,155	103,832	-323	99.69%	yes
2010	104,012	104,331	319	99.69%	yes
2011	105,195	105,315	120	99.89%	yes

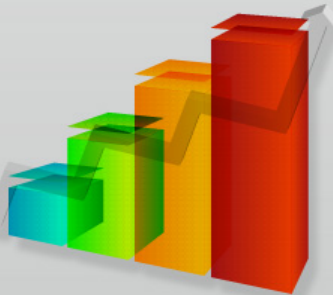
BCPS Blueprint for Progress Indicator 8.5

"The student enrollment projections will have a 99.0% accuracy rate. (BCPS Standard)"

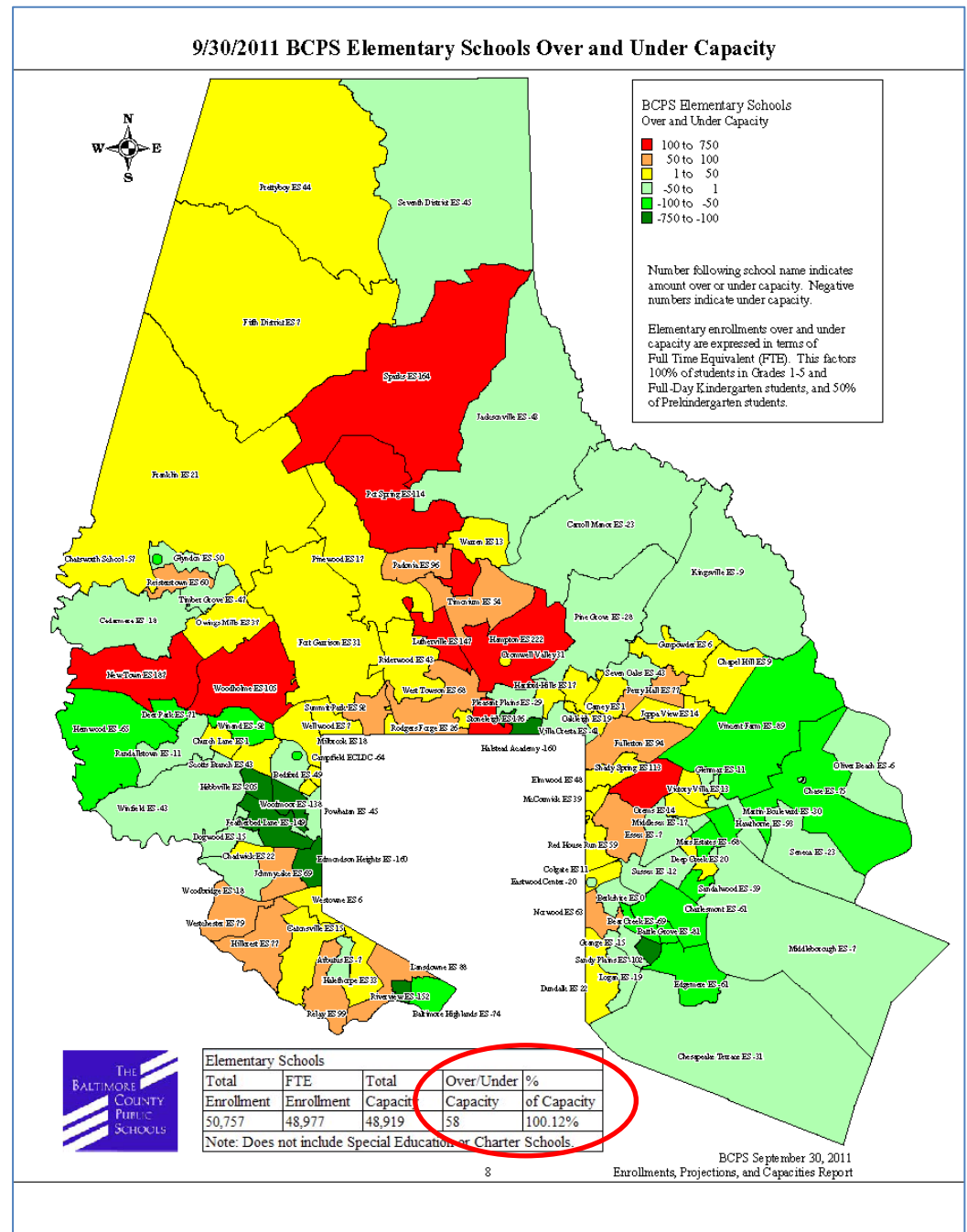
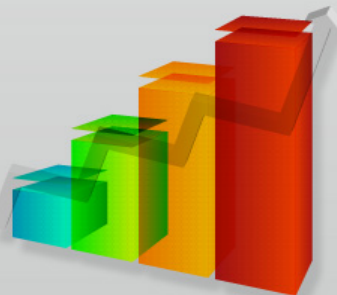


Projection vs Actual Enrollments

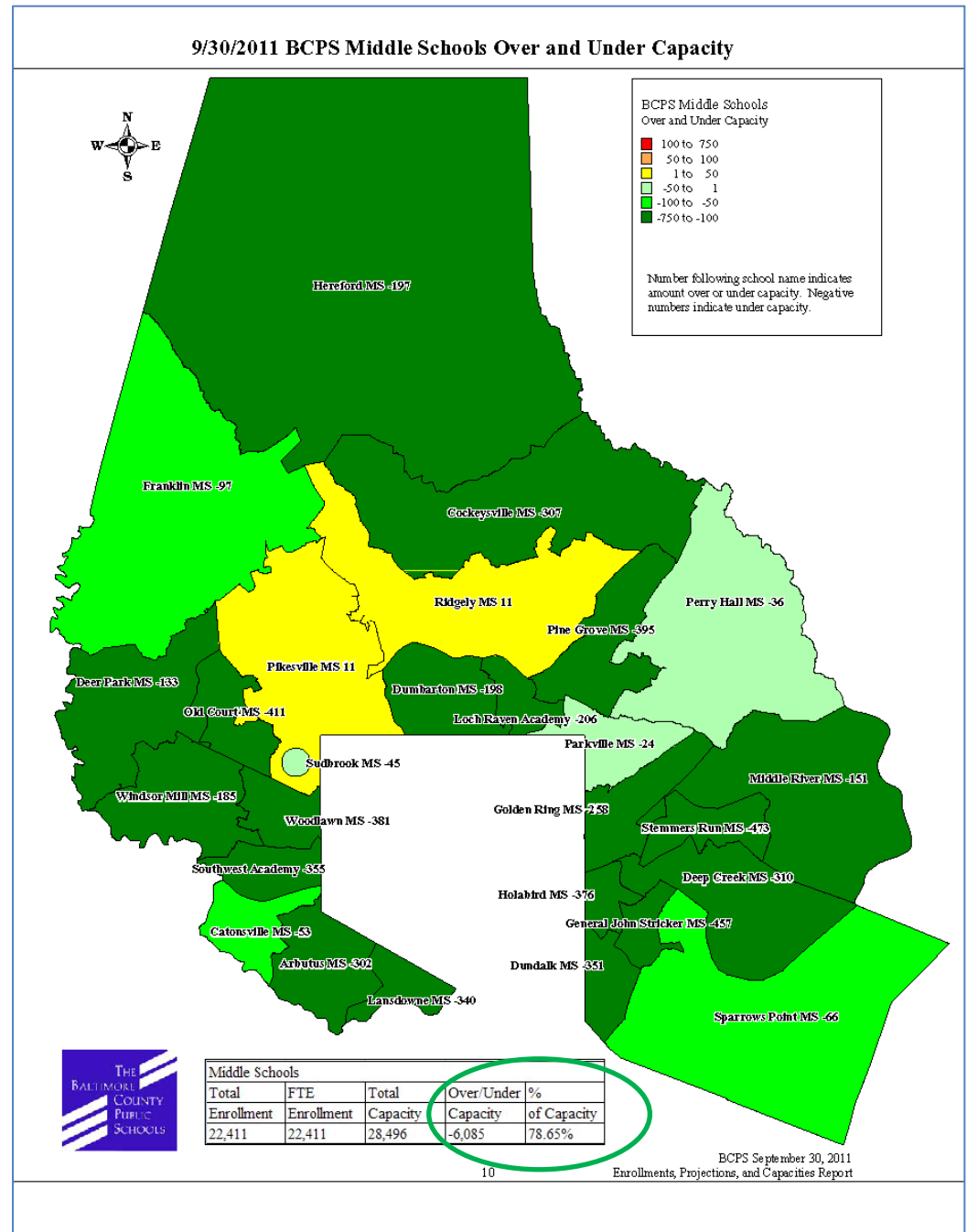
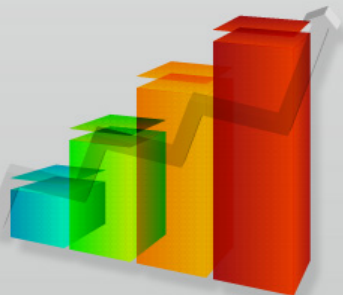
	9/30/2010	9/30/2011	9/30/2011	Over/Under	%	Increase/Decrease
	Actual	Projection	Actual	Projection	Accuracy	From Prior Year
Elementary Schools	49,314	50,399	50,757	358	99.29%	1,443
Middle Schools	22,272	22,515	22,411	-104	99.54%	139
High Schools	31,202	30,775	30,554	-221	99.28%	-648
Special Education Schools	351	351	374	23	93.85%	23
Alternative Schools	292	292	248	-44	84.93%	-44
Other Schools and Programs	900	863	971	108	88.88%	71
Total	104,331	105,195	105,315	120	99.89%	984



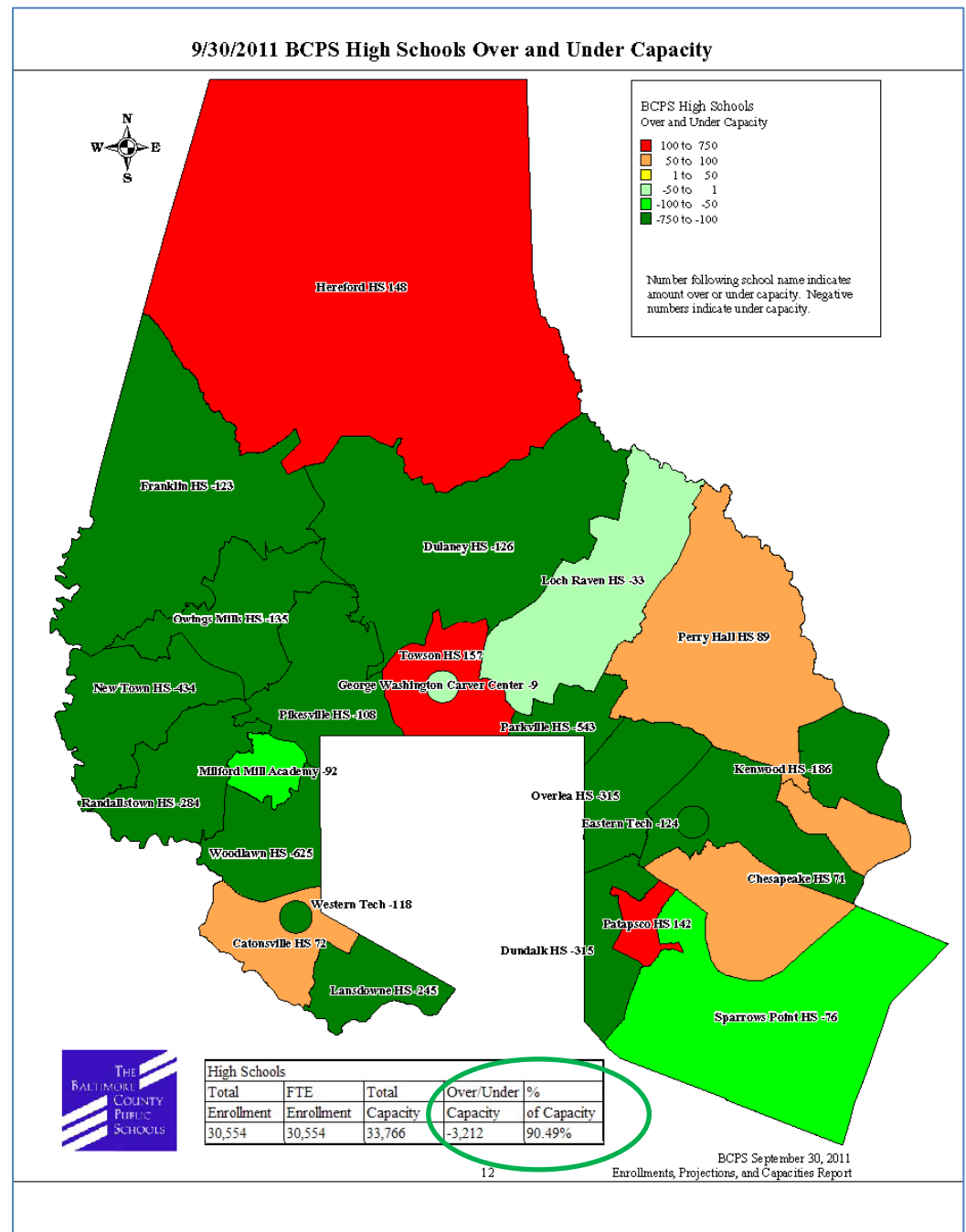
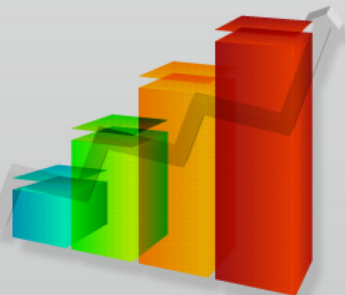
Elementary Schools



Middle Schools



High Schools



Planning Priorities Review

Capital Planning Priorities and Recommended Timelines FY 2013 - FY 2017

PLANNING REGION	FY 2013	FY 2014	FY 2015	FY 2016	FY 2017
SOUTHWEST					
NORTHWEST		NW Area Elementary Seats *	NW Area Elementary Seats *		
CENTRAL	200 seats Stoneleigh ES				
CENTRAL	700 seats in Lutherville Area				
CENTRAL	200 seats and limited renovation at Hereford HS				
CENTRAL			200 seats Sparks ES	200 seats Sparks ES	
NORTHEAST					
SOUTHEAST					

Project Phase
Planning
Funding

Lutherville Area - Lutherville ES, Pinewood ES, Pot Spring ES, Padonia, ES, Timonium ES, Riderwood ES, West Towson ES
* Study to be commissioned in FY12

BCPS September 30, 2011 Enrollments, Projections, and Capacities Report



*“Our children are our future.
We must teach them well.
They deserve the best.”*

Joe A. Hairston, Superintendent



BALTIMORE COUNTY PUBLIC SCHOOLS

Joe A. Hairston, Superintendent

6901 Charles Street Towson, MD • 21204-3711

November 2011

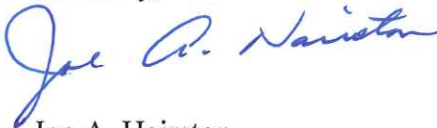
Dear Educational Partners:

The Baltimore County Public Schools *Blueprint for Progress* provides a foundation of clear standards and accountability for everyone involved in education in our community. As guided by the *Blueprint for Progress*, one of our goals is that all students will receive a quality education through the efficient and effective use of resources. Our commitment to that goal is reflected in the system's annual enrollment projection and monitoring process. Each year, student enrollment data is used to inform many critical decisions regarding the delivery of instruction and services that meet the needs of our children. The *September 30, 2011 Enrollments, Projections, and Capacities Report* provides detailed information about current student population as well as population trends over the past five years.

Baltimore County Public Schools continues to achieve what all school systems aspire to accomplish – continuous progress in raising student achievement. Our community stakeholders are essential partners in this work. The exchange of information is at the heart of the educational process and, as such, I am pleased to be able to share this report with you.

For additional information and an electronic version of this report, please visit the Baltimore County Public Schools Office of Strategic Planning Web site at http://www.bcps.org/offices/strategic_planning/ or call 410-887-4216.

Sincerely,



Joe A. Hairston
Superintendent

Table of Contents

Page	
2	Table of Contents
3	Frequently Asked Questions about Enrollments, Projections, and Capacities
4	Changes to the State Rated Capacities of BCPS
5	Elementary School Zone I Information
6	Elementary School Zone II Information
7	Elementary School Zone III Information
8	Elementary Schools Over and Under Capacity Map
9	Middle School Information
10	Middle Schools Over and Under Capacity Map
11	High School Information
12	High Schools Over and Under Capacity Map
13	BCPS 2007-2011 Projection and Enrollment Comparisons

Cover pictures from September 2011 Superintendent school visits.

Frequently Asked Questions about Enrollments, Projections, and Capacities

When are enrollments counted?

The official enrollments for all schools are calculated on September 30 in accordance with the Maryland State Department of Education (MSDE) policies.

What is Full Time Equivalent Enrollment?

Full Time Equivalent (FTE) enrollment is an adjustment made to a school's total enrollment for the purpose of comparing enrollment to a school's official capacity. FTE enrollment factors 100 percent of students in grades kindergarten through grade five, and 50 percent of students in prekindergarten and preschool because they are half-day programs. No FTE conversion is required at secondary schools.

How often are enrollment projections updated?

School system enrollment projections are updated annually to ensure that trend information is current and the latest data is available. BCPS shares updated ten-year projections every January.

Are enrollment projections accurate?

In alignment with BCPS *Blueprint for Progress* Indicator 8.5, the target accuracy for systemwide projections is 99 percent. This goal has been met consistently for the past several years, including September 30, 2011 (99.89% accuracy). The target accuracy for individual schools is +/- 40 students.

How is capacity calculated?

State Rated Capacity (SRC) is defined by MSDE and is calculated based on the number of teaching stations in the school and their utilization. SRC applies to the main building and permanent additions. SRC does not include relocatable units.

At the elementary level, SRC is calculated as follows:

- Regular classroom (Grades 1-5) 23 seats
- Self-contained special education classroom 10 seats
- Kindergarten classroom 22 seats
- Prekindergarten classroom 20 seats
- Zero-capacity allowances: cafeteria, gymnasium and multi-purpose rooms, computer lab, art, vocal music, instrumental music, reading resource, science storage and preparation rooms

At the secondary level, SRC is calculated as follows:

- Regular classroom/computer classroom (Grades 6-12) 25 seats x 85% utilization
- Self-contained special education classroom 10 seats x 100% utilization
- Gymnasium (2 classrooms) 50 seats x 85% utilization
- Zero-capacity allowances: computer lab
- Teaching stations used for activity rooms, dance studios, weight rooms, science labs, art, music, technology education, family studies, and business classrooms all count as teaching stations (25 seats x 85% utilization)
- Teaching stations that can be separated by moveable walls or partitions (such as those in some designed auditoriums) also contribute to capacity (25 seats x 85% utilization)

Frequently Asked Questions about Enrollments, Projections, and Capacities, continued

Why is capacity important?

When FTE enrollments exceed 90 percent capacity at a school, the school system may consider implementing enrollment relief strategies.

Why does capacity change?

The SRC is recalculated and submitted for approval to the Maryland Department of Planning (MDP) when teaching station utilization changes occur within a school.

Changes to the State Rated Capacity of Baltimore County Public Schools Approved by the Maryland Department of Planning August 17, 2011

School	Former Capacity (2010-2011)	New Capacity (2011-2012)	Increase/ Decrease
Baltimore Highlands ES	585	549	-36
Charlesmont ES	426	418	-8
Featherbed Lane ES	664	654	-10
Glyndon ES	565	520	-45
Halethorpe ES	389	392	+3
Joppa View ES	621	635	+14
Timber Grove ES	634	600	-34
Timonium ES	405	395	-10
Winand ES	586	583	-3
Elementary School Total	4,875	4,746	-129
Dundalk MS	858	814	-44
Franklin MS	1,422	1,389	-33
Pikesville MS	1,070	1,006	-64
Pine Grove MS	1,241	1,293	+52
Middle School Total	4,591	4,502	-89
Dulaney HS	1,995	1,984	-11
Overlea HS	1,273	1,230	-43
Randallstown HS	1,444	1,379	-65
High School Total	4,712	4,593	-119

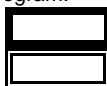
Elementary Zone I Schools

School	Zone	9/30/11 Enroll	9/30/11 FTE	State Capacity 2011	Number Students +/- Capacity	% of Capacity	% Over/ Under Capacity
Arbutus Elementary	I	408	398	405	-7	98.27%	-1.73%
Baltimore Highlands Elementary	I	510	475	549	-74	86.52%	-13.48%
Battle Grove Elementary	I	321	296	377	-81	78.51%	-21.49%
Bear Creek Elementary	I	436	415	484	-69	85.74%	-14.26%
Bedford Elementary	I	260	260	309	-49	84.14%	-15.86%
Berkshire Elementary	I	463	428	428	0	100.00%	0.00%
Campfield Early Childhood Center	I	370	258	322	-64	80.12%	-19.88%
Carney Elementary	I	538	528	527	1	100.19%	0.19%
Carroll Manor Elementary	I	339	339	362	-23	93.65%	-6.35%
Catonsville Elementary	I	436	420	405	15	103.70%	3.70%
Cedarmere Elementary	I	473	456	474	-18	96.20%	-3.80%
Chadwick Elementary	I	452	430	408	22	105.39%	5.39%
Chapel Hill Elementary	I	645	645	636	9	101.42%	1.42%
Charlesmont Elementary	I	381	357	418	-61	85.41%	-14.59%
Chase Elementary	I	342	318	393	-75	80.92%	-19.08%
Chatsworth School	I	385	385	442	-57	87.10%	-12.90%
Chesapeake Terrace Elementary	I	271	261	292	-31	89.38%	-10.62%
Church Lane Elementary	I	487	477	476	1	100.21%	0.21%
Colgate Elementary	I	330	330	319	11	103.45%	3.45%
Cromwell Valley Elementary	I	442	442	411	31	107.54%	7.54%
Deep Creek Elementary	I	388	388	368	20	105.43%	5.43%
Deer Park Elementary	I	399	380	451	-71	84.26%	-15.74%
Dogwood Elementary	I	618	597	612	-15	97.55%	-2.45%
Dundalk Elementary	I	651	612	590	22	103.73%	3.73%
Eastwood Center	I	190	177	197	-20	89.85%	-10.15%
Edgemere Elementary	I	479	462	523	-61	88.34%	-11.66%
Edmondson Heights Elementary	I	453	429	589	-160	72.84%	-27.16%
Elmwood Elementary	I	547	522	474	48	110.13%	10.13%
Essex Elementary	I	497	464	471	-7	98.51%	-1.49%
Featherbed Lane Elementary	I	536	505	654	-149	77.22%	-22.78%
Fifth District Elementary	I	281	281	274	7	102.55%	2.55%
Fort Garrison Elementary	I	462	462	431	31	107.19%	7.19%
Franklin Elementary	I	505	494	473	21	104.44%	4.44%
Fullerton Elementary	I	570	557	463	94	120.30%	20.30%
Glenmar Elementary	I	382	360	371	-11	97.04%	-2.96%
Glyndon Elementary	I	480	470	520	-50	90.38%	-9.62%
Battle Monument School *	I	79	79				

Capacities in bold have updated for the 2011/2012 school year.

Schools marked with * do not reflect capacity due to program.

% Capacities in a heavy box



reflect enrollment greater than 90.00% capacity.

% Capacities in a double box

reflect enrollment less than 60.00% of capacity.

Elementary Zone II Schools

School	Zone	9/30/11 Enroll	9/30/11 FTE	State Capacity 2011	Number Students +/- Capacity	% of Capacity	% Over/ Under Capacity
Grange Elementary	II	389	370	385	-15	96.10%	-3.90%
Gunpowder Elementary	II	505	505	499	6	101.20%	1.20%
Halethorpe Elementary	II	451	425	392	33	108.42%	8.42%
Halstead Academy	II	433	405	565	-160	71.68%	-28.32%
Hampton Elementary	II	529	529	307	222	172.31%	72.31%
Harford Hills Elementary	II	350	340	323	17	105.26%	5.26%
Hawthorne Elementary	II	551	494	587	-93	84.16%	-15.84%
Hebbville Elementary	II	357	335	540	-205	62.04%	-37.96%
Hernwood Elementary	II	372	363	428	-65	84.81%	-15.19%
Hillcrest Elementary	II	752	743	666	77	111.56%	11.56%
Jacksonville Elementary	II	594	594	637	-43	93.25%	-6.75%
Johnnycake Elementary	II	657	628	559	69	112.34%	12.34%
Joppa View Elementary	II	652	649	635	14	102.20%	2.20%
Kingsville Elementary	II	341	340	349	-9	97.42%	-2.58%
Lansdowne Elementary	II	436	401	313	88	128.12%	28.12%
Logan Elementary	II	519	498	517	-19	96.32%	-3.68%
Lutherville Laboratory	II	562	554	407	147	136.12%	36.12%
Mars Estates Elementary	II	390	363	431	-68	84.22%	-15.78%
Martin Boulevard Elementary	II	279	261	291	-30	89.69%	-10.31%
McCormick Elementary	II	470	419	380	39	110.26%	10.26%
Middleborough Elementary	II	334	319	326	-7	97.85%	-2.15%
Middlesex Elementary	II	530	500	517	-17	96.71%	-3.29%
Milbrook Elementary	II	337	337	319	18	105.64%	5.64%
New Town Elementary	II	892	884	697	187	126.83%	26.83%
Norwood Elementary	II	601	584	521	63	112.09%	12.09%
Oakleigh Elementary	II	537	513	494	19	103.85%	3.85%
Oliver Beach Elementary	II	269	259	265	-6	97.74%	-2.26%
Orems Elementary	II	351	327	313	14	104.47%	4.47%
Owings Mills Elementary	II	775	736	699	37	105.29%	5.29%
Padonia International Elementary	II	448	407	311	96	130.87%	30.87%
Perry Hall Elementary	II	603	593	516	77	114.92%	14.92%
Pine Grove Elementary	II	489	469	497	-28	94.37%	-5.63%
Pinewood Elementary	II	586	583	566	17	103.00%	3.00%
Pleasant Plains Elementary	II	500	480	509	-29	94.30%	-5.70%
Pot Spring Elementary	II	610	591	477	114	123.90%	23.90%

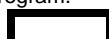
Imagine Discovery Public Charter School *	II	623	623				
---	----	-----	-----	--	--	--	--

Maiden Choice School *	II	109	109				
------------------------	----	-----	-----	--	--	--	--

Capacities in bold have updated for the 2011/2012 school year.

Schools marked with * do not reflect capacity due to program.

% Capacities in a heavy box



reflect enrollment greater than 90.00% capacity.

% Capacities in a double box



reflect enrollment less than 60.00% of capacity.

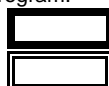
Elementary Zone III Schools

School	Zone	9/30/11 Enroll	9/30/11 FTE	State Capacity 2011	Number Students +/- Capacity	% of Capacity	% Over/ Under Capacity
Powhatan Elementary	III	280	268	313	-45	85.62%	-14.38%
Prettyboy Elementary	III	442	442	398	44	111.06%	11.06%
Randallstown Elementary	III	387	387	398	-11	97.24%	-2.76%
Red House Run Elementary	III	545	545	486	59	112.14%	12.14%
Reisterstown Elementary	III	531	510	450	60	113.33%	13.33%
Relay Elementary	III	524	514	415	99	123.86%	23.86%
Riderwood Elementary	III	506	506	463	43	109.29%	9.29%
Riverview Elementary	III	451	420	572	-152	73.43%	-26.57%
Rodgers Forge Elementary	III	422	422	396	26	106.57%	6.57%
Sandalwood Elementary	III	504	483	542	-59	89.11%	-10.89%
Sandy Plains Elementary	III	596	562	664	-102	84.64%	-15.36%
Scotts Branch Elementary	III	554	554	511	43	108.41%	8.41%
Seneca Elementary	III	406	386	409	-23	94.38%	-5.62%
Seven Oaks Elementary	III	406	385	428	-43	89.95%	-10.05%
Seventh District Elementary	III	420	416	461	-45	90.24%	-9.76%
Shady Spring Elementary	III	633	612	499	113	122.65%	22.65%
Sparks Elementary	III	574	574	410	164	140.00%	40.00%
Stoneleigh Elementary	III	675	675	499	176	135.27%	35.27%
Summit Park Elementary	III	432	428	336	92	127.38%	27.38%
Sussex Elementary	III	391	368	380	-12	96.84%	-3.16%
Timber Grove Elementary	III	563	553	600	-47	92.17%	-7.83%
Timonium Elementary	III	449	449	395	54	113.67%	13.67%
Victory Villa Elementary	III	360	339	326	13	103.99%	3.99%
Villa Cresta Elementary	III	626	596	637	-41	93.56%	-6.44%
Vincent Farm Elementary	III	628	610	699	-89	87.27%	-12.73%
Warren Elementary	III	427	408	395	13	103.29%	3.29%
Wellwood International Elementary	III	462	462	455	7	101.54%	1.54%
West Towson Elementary	III	519	519	451	68	115.08%	15.08%
Westchester Elementary	III	584	578	499	79	115.83%	15.83%
Westowne Elementary	III	550	509	503	6	101.19%	1.19%
Winand Elementary	III	541	491	583	-92	84.22%	-15.78%
Winfield Elementary	III	460	442	485	-43	91.13%	-8.87%
Woodbridge Elementary	III	423	414	432	-18	95.83%	-4.17%
Woodholme Elementary	III	781	781	676	105	115.53%	15.53%
Woodmoor Elementary	III	527	493	631	-138	78.13%	-21.87%
Ridge Ruxton School *	III	111	111				
White Oak School *	III	75	75				

Capacities in bold have updated for the 2011/2012 school year.

Schools marked with * do not reflect capacity due to program.

% Capacities in a heavy box

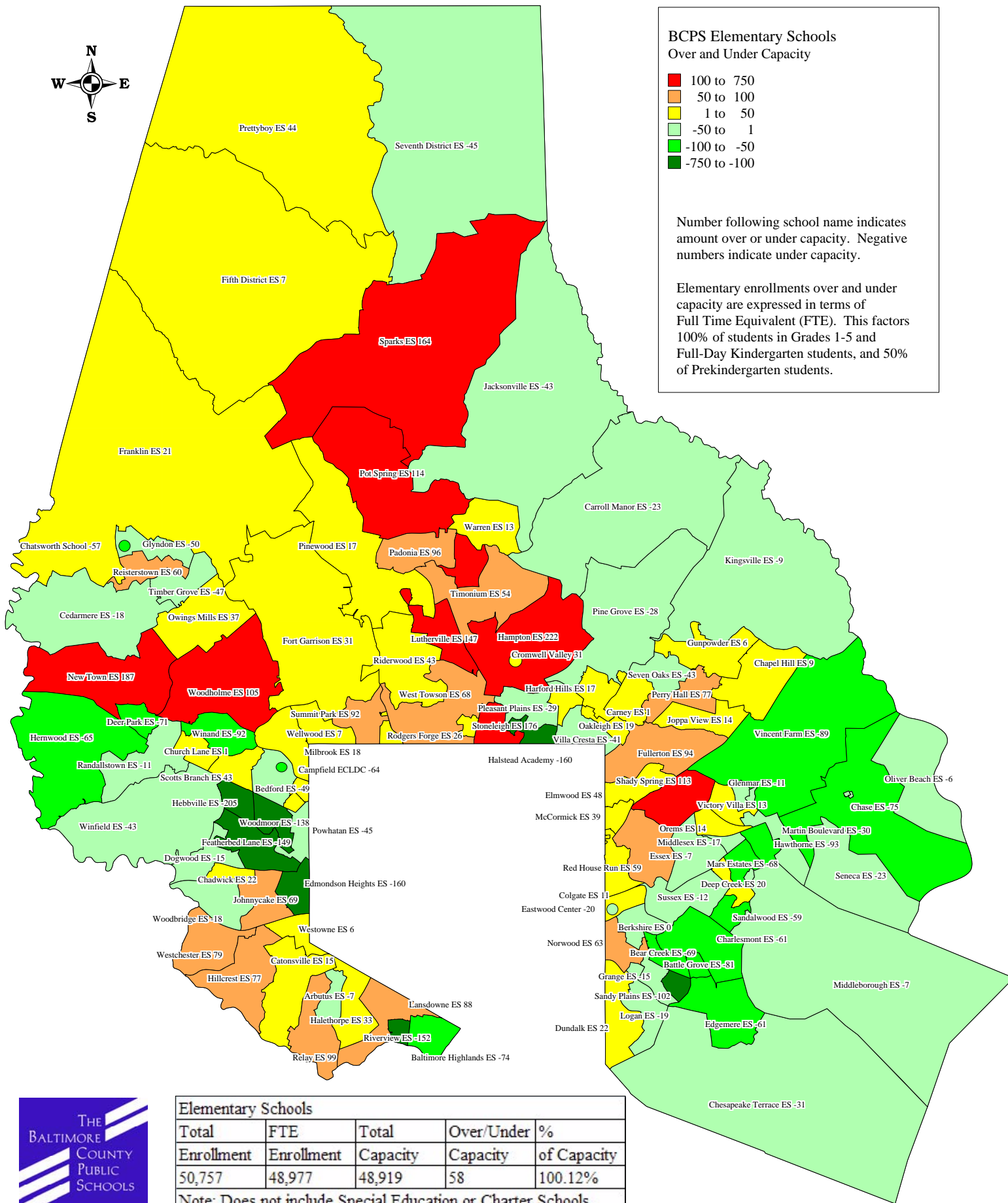


reflect enrollment greater than 90.00% capacity.

% Capacities in a double box

reflect enrollment less than 60.00% of capacity.

9/30/2011 BCPS Elementary Schools Over and Under Capacity



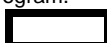
Middle Schools

School	Zone	9/30/11 Enroll	9/30/11 FTE	State Capacity 2011	Number Students +/- Capacity	% of Capacity	% Over/ Under Capacity
Arbutus Middle	M	734	734	1036	-302	70.85%	-29.15%
Catonsville Middle	M	721	721	774	-53	93.15%	-6.85%
Cockeysville Middle	M	742	742	1049	-307	70.73%	-29.27%
Deep Creek Middle	M	803	803	1113	-310	72.15%	-27.85%
Deer Park Middle	M	1235	1235	1368	-133	90.28%	-9.72%
Dumbarton Middle	M	916	916	1114	-198	82.23%	-17.77%
Dundalk Middle	M	463	463	814	-351	56.88%	-43.12%
Franklin Middle	M	1292	1292	1389	-97	93.02%	-6.98%
Gen. Stricker Middle	M	792	792	1249	-457	63.41%	-36.59%
Golden Ring Middle	M	591	591	849	-258	69.61%	-30.39%
Hereford Middle	M	926	926	1123	-197	82.46%	-17.54%
Holabird Middle	M	652	652	1028	-376	63.42%	-36.58%
Lansdowne Middle	M	635	635	975	-340	65.13%	-34.87%
Loch Raven Technical Academy	M	695	695	901	-206	77.14%	-22.86%
Middle River Middle	M	856	856	1007	-151	85.00%	-15.00%
Old Court Middle	M	572	572	983	-411	58.19%	-41.81%
Parkville Middle	M	1065	1065	1089	-24	97.80%	-2.20%
Perry Hall Middle	M	1607	1607	1643	-36	97.81%	-2.19%
Pikesville Middle	M	1017	1017	1006	11	101.09%	1.09%
Pine Grove Middle	M	898	898	1293	-395	69.45%	-30.55%
Ridgely Middle	M	1081	1081	1070	11	101.03%	1.03%
Southwest Academy Magnet School	M	746	746	1101	-355	67.76%	-32.24%
Sparrows Point Middle	M	507	507	573	-66	88.48%	-11.52%
Stemmers Run Middle	M	681	681	1154	-473	59.01%	-40.99%
Sudbrook Magnet Middle	M	1015	1015	1060	-45	95.75%	-4.25%
Windsor Mill Middle	M	535	535	720	-185	74.31%	-25.69%
Woodlawn Middle	M	634	634	1015	-381	62.46%	-37.54%

Capacities in bold have updated for the 2011/2012 school year.

Schools marked with * do not reflect capacity due to program.

% Capacities in a heavy box



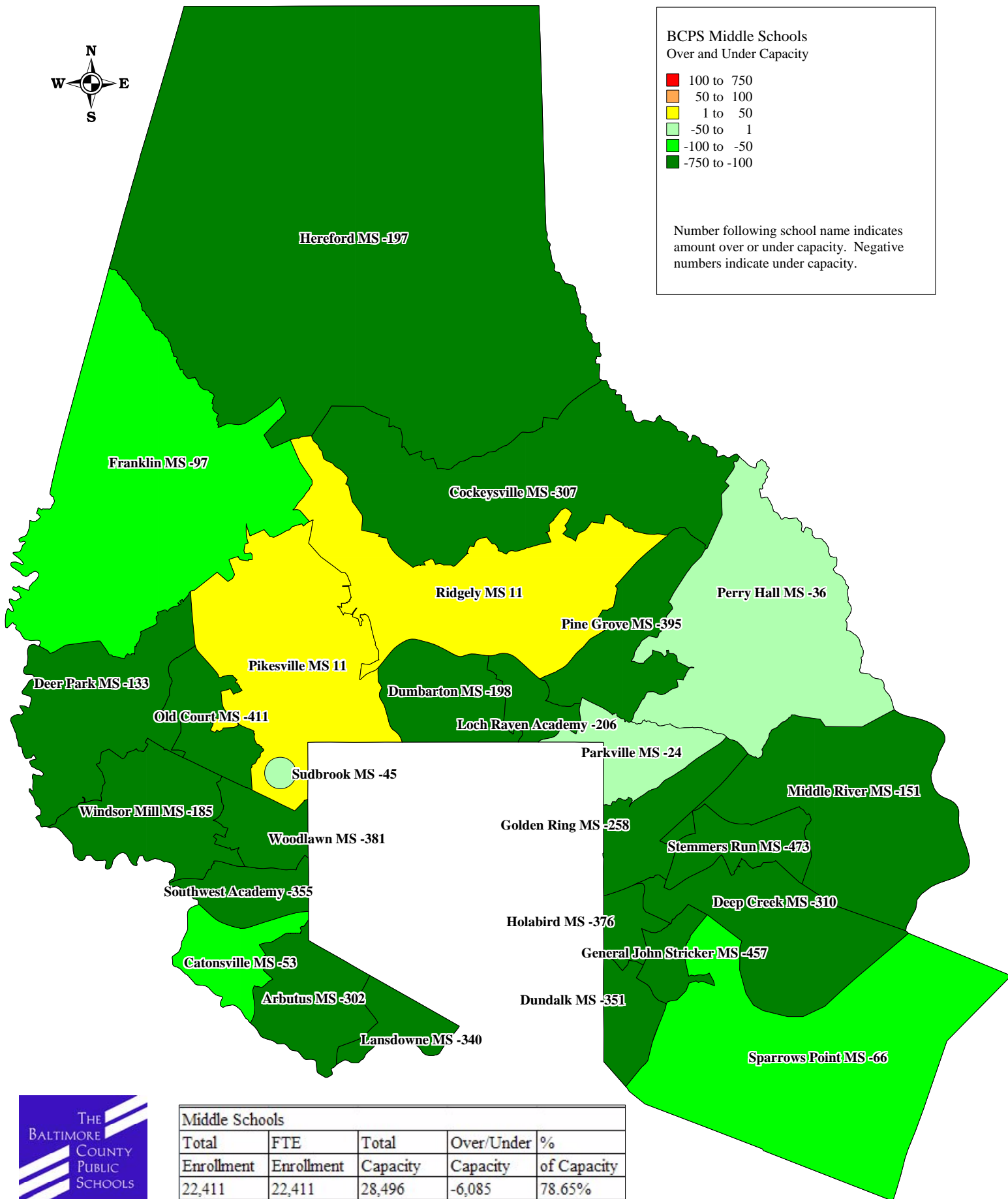
reflect enrollment greater than 90.00% capacity.

% Capacities in a double box



reflect enrollment less than 60.00% of capacity.

9/30/2011 BCPS Middle Schools Over and Under Capacity



Middle Schools				
Total	FTE	Total	Over/Under	%
Enrollment	Enrollment	Capacity	Capacity	of Capacity
22,411	22,411	28,496	-6,085	78.65%

High Schools

School	Zone	9/30/11 Enroll	9/30/11 FTE Enroll	State Capacity 2011	Number Students +/- Capacity	% of Capacity	% Over/ Under Capacity
Catonsville High	H	1757	1757	1685	72	104.27%	4.27%
Chesapeake High	H	1090	1090	1019	71	106.97%	6.97%
Dulaney High	H	1858	1858	1984	-126	93.65%	-6.35%
Dundalk High	H	1223	1223	1538	-315	79.52%	-20.48%
Eastern Technical High	H	1256	1256	1380	-124	91.01%	-8.99%
Franklin High	H	1524	1524	1647	-123	92.53%	-7.47%
George Washington Carver Center	H	757	757	766	-9	98.83%	-1.17%
Hereford High	H	1378	1378	1230	148	112.03%	12.03%
Kenwood High	H	1732	1732	1918	-186	90.30%	-9.70%
Lansdowne High	H	1175	1175	1420	-245	82.75%	-17.25%
Loch Raven High	H	942	942	975	-33	96.62%	-3.38%
Milford Mill Academy	H	1373	1373	1465	-92	93.72%	-6.28%
New Town High	H	869	869	1303	-434	66.69%	-33.31%
Overlea High	H	915	915	1230	-315	74.39%	-25.61%
Owings Mills High	H	968	968	1103	-135	87.76%	-12.24%
Parkville High	H	1494	1494	2037	-543	73.34%	-26.66%
Patapsco High School Center for the Arts	H	1444	1444	1302	142	110.91%	10.91%
Perry Hall High	H	2199	2199	2110	89	104.22%	4.22%
Pikesville High	H	898	898	1006	-108	89.26%	-10.74%
Randallstown High	H	1095	1095	1379	-284	79.41%	-20.59%
Sparrows Point High	H	795	795	871	-76	91.27%	-8.73%
Towson High	H	1417	1417	1260	157	112.46%	12.46%
Western School of Technology	H	891	891	1009	-118	88.31%	-11.69%
Woodlawn High	H	1504	1504	2129	-625	70.64%	-29.36%

Sollers Point Technical High School data is not included as students who participate in its technical programs are included in the enrollments of their home schools.

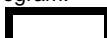
Alternative Schools and Other Programs

School	Zone	9/30/11 Enroll	9/30/11 FTE Enroll	State Capacity 2011	Number Students +/- Capacity	% of Capacity	% Over/ Under Capacity
Bridge Center *	H	15	15				
Catonsville Center for Alternative Studies *	H	67	67				
Crossroads Center *	H	221	221				
Evening High School *	H	92	92				
Home Assignment - Elementary *	H	2	2				
Home Assignment - Secondary *	H	18	18				
Meadowood Education Center *	H	34	34				
Rosedale Center for Alternative Studies *	H	147	147				

Capacities in bold have updated for the 2011/2012 school year.

Schools marked with * do not reflect capacity due to program.

% Capacities in a heavy box



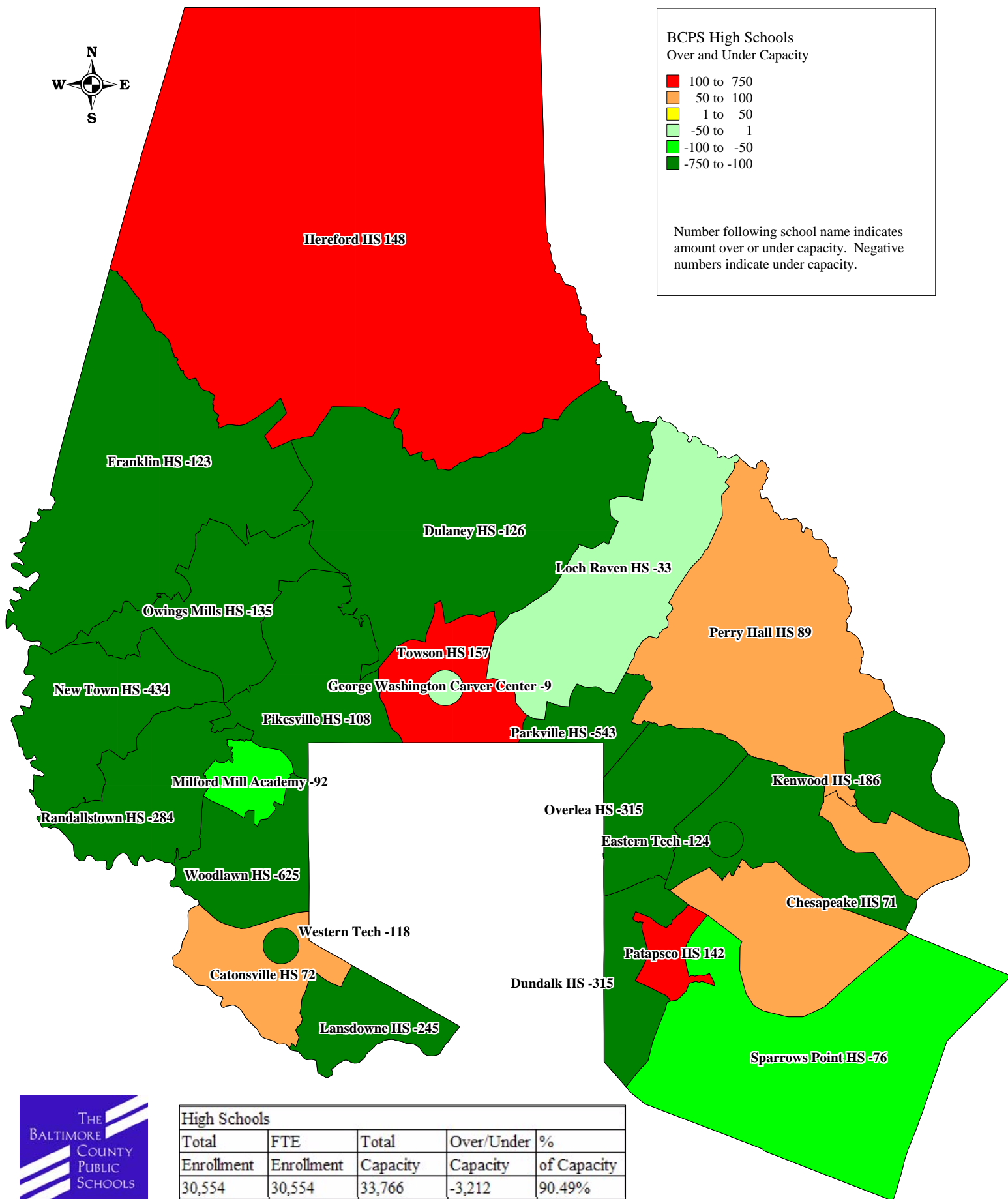
reflect enrollment greater than 90.00% capacity.

% Capacities in a double box



reflect enrollment less than 60.00% of capacity.

9/30/2011 BCPS High Schools Over and Under Capacity

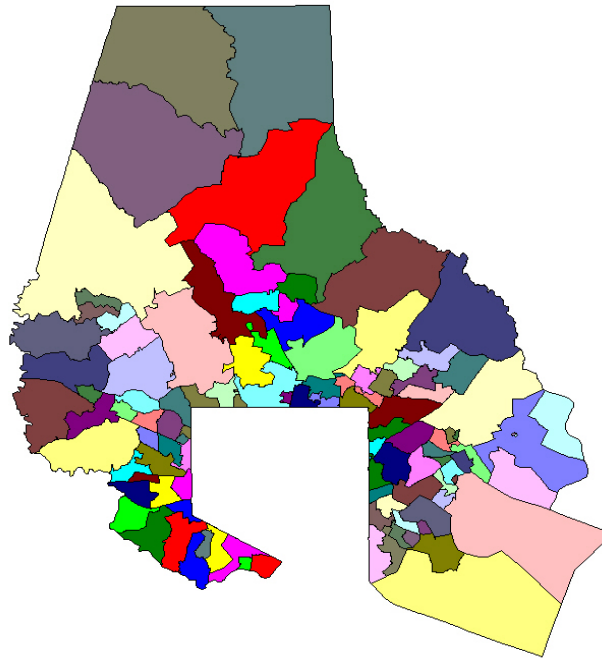


Baltimore County Public Schools

2007 - 2011 Enrollment Projections and Comparisons

Baltimore County Public Schools Office of Strategic Planning

*Focused
on Quality;*



*Committed to
Excellence*

The following charts display a 5 year history of projections and enrollments for the elementary, middle and high school zones of Baltimore County Public Schools.

All projections and enrollments reflect a date of September 30 of the given year.

Differences highlighted in red note differences of greater than +/- 40 students, which is the projection goal for individual schools.

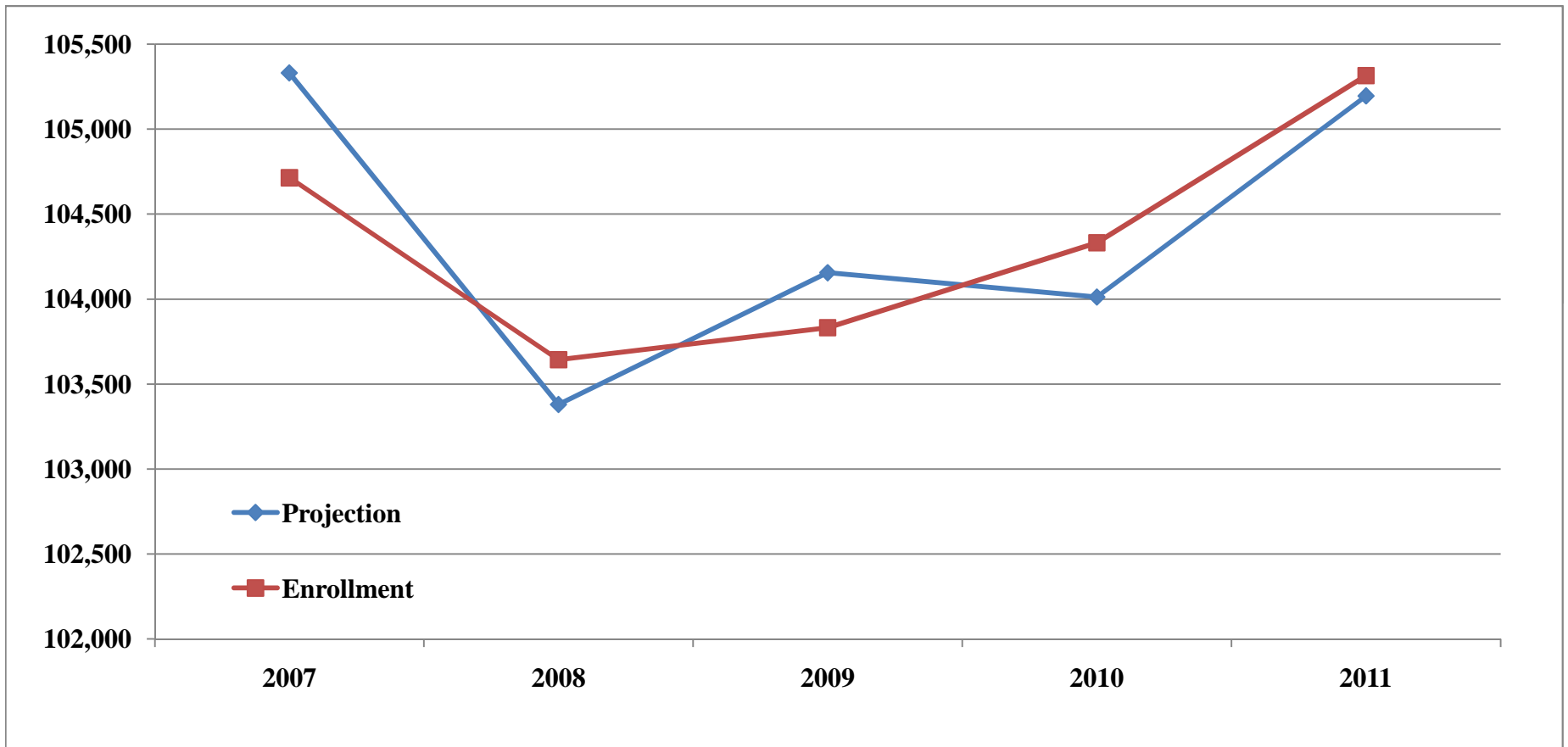
Revised 10/11/2011

BCPS 1 Year Enrollment Projection Accuracy

Year	Projection	Official Enrollment	+/- Projection	Accuracy	Indicator Met?
2007	105,330	104,714	-616	99.42%	yes
2008	103,380	103,643	263	99.75%	yes
2009	104,155	103,832	-323	99.69%	yes
2010	104,012	104,331	319	99.69%	yes
2011	105,195	105,315	120	99.89%	yes

BCPS Blueprint for Progress Indicator 8.5

"The student enrollment projections will have a 99.0% accuracy rate. (BCPS Standard)"



Baltimore County Public Schools, Projection vs Enrollment 2007-2011, Elementary School Zone I

Elementary Zone I	2007				2008				2009				2010				2011			
	Project	Enroll	+/-	% Acc	Project	Enroll	+/-	% Acc	Project	Enroll	+/-	% Acc	Project	Enroll	+/-	% Acc	Project	Enroll	+/-	% Acc
Arbutus ES	298	308	10	103.36%	318	333	15	104.72%	341	363	22	106.45%	382	408	26	106.81%	431	408	-23	94.66%
Baltimore Highlands ES	514	523	9	101.75%	515	512	-3	99.42%	519	528	9	101.73%	525	514	-11	97.90%	511	510	-1	99.80%
Battle Grove ES	332	331	-1	99.70%	344	332	-12	96.51%	350	325	-25	92.86%	334	306	-28	91.62%	315	321	6	101.90%
Bear Creek ES	490	428	-62	87.35%	413	453	40	109.69%	451	445	-6	98.67%	469	446	-23	95.10%	438	436	-2	99.54%
Bedford ES	323	307	-16	95.05%	302	276	-26	91.39%	267	273	6	102.25%	273	277	4	101.47%	281	260	-21	92.53%
Berkshire ES	321	340	19	105.92%	347	385	38	110.95%	457	446	-11	97.59%	475	436	-39	91.79%	454	463	9	101.98%
Campfield Center	334	317	-17	94.91%	316	307	-9	97.15%	303	338	35	111.55%	323	302	-21	93.50%	317	370	53	116.72%
Carney ES	480	479	-1	99.79%	503	489	-14	97.22%	487	475	-12	97.54%	479	505	26	105.43%	524	538	14	102.67%
Carroll Manor ES	364	347	-17	95.33%	323	318	-5	98.45%	314	333	19	106.05%	350	338	-12	96.57%	337	339	2	100.59%
Catonsville ES	384	387	3	100.78%	402	413	11	102.74%	417	419	2	100.48%	456	446	-10	97.81%	458	436	-22	95.20%
Cedarmere ES	479	476	-3	99.37%	453	459	6	101.32%	462	435	-27	94.16%	427	464	37	108.67%	472	473	1	100.21%
Chadwick ES	407	423	16	103.93%	424	406	-18	95.75%	413	452	39	109.44%	459	454	-5	98.91%	455	452	-3	99.34%
Chapel Hill ES	825	794	-31	96.24%	531	534	3	100.56%	562	577	15	102.67%	577	599	22	103.81%	630	645	15	102.38%
Charlesmont ES	342	354	12	103.51%	376	350	-26	93.09%	351	327	-24	93.16%	322	372	50	115.53%	402	381	-21	94.78%
Chase ES	343	337	-6	98.25%	321	323	2	100.62%	322	305	-17	94.72%	294	320	26	108.84%	330	342	12	103.64%
Chatsworth ES	394	384	-10	97.46%	380	390	10	102.63%	386	380	-6	98.45%	387	371	-16	95.87%	368	385	17	104.62%
Chesapeake Terrace ES	189	190	1	100.53%	185	195	10	105.41%	254	263	9	103.54%	276	258	-18	93.48%	263	271	8	103.04%
Church Lane ES	483	492	9	101.86%	494	463	-31	93.72%	470	483	13	102.77%	496	497	1	100.20%	513	487	-26	94.93%
Colgate ES	330	342	12	103.64%	343	331	-12	96.50%	338	328	-10	97.04%	336	312	-24	92.86%	325	330	5	101.54%
Cromwell ES	432	432	0	100.00%	442	432	-10	97.74%	433	436	3	100.69%	435	439	4	100.92%	435	442	7	101.61%
Deep Creek ES	419	425	6	101.43%	434	386	-48	88.94%	386	384	-2	99.48%	380	405	25	106.58%	429	388	-41	90.44%
Deer Park ES	480	423	-57	88.13%	407	431	24	105.90%	414	416	2	100.48%	412	379	-33	91.99%	354	399	45	112.71%
Dogwood ES	477	484	7	101.47%	459	450	-9	98.04%	432	411	-21	95.14%	496	561	65	113.10%	570	618	48	108.42%
Dundalk ES	704	611	-93	86.79%	599	651	52	108.68%	660	636	-24	96.36%	642	627	-15	97.66%	625	651	26	104.16%
Eastwood Center	165	193	28	116.97%	198	208	10	105.05%	209	198	-11	94.74%	199	197	-2	98.99%	194	190	-4	97.94%
Edgemere ES	549	540	-9	98.36%	551	513	-38	93.10%	449	468	19	104.23%	456	458	2	100.44%	456	479	23	105.04%
Edmondson Heights ES	588	573	-15	97.45%	528	505	-23	95.64%	466	505	39	108.37%	492	498	6	101.22%	490	453	-37	92.45%
Elmwood ES	520	505	-15	97.12%	491	548	57	111.61%	579	573	-6	98.96%	579	542	-37	93.61%	567	547	-20	96.47%
Essex ES	447	465	18	104.03%	471	461	-10	97.88%	460	474	14	103.04%	484	496	12	102.48%	513	497	-16	96.88%
Featherbed Lane ES	779	731	-48	93.84%	705	691	-14	98.01%	689	678	-11	98.40%	560	572	12	102.14%	568	536	-32	94.37%
Fifth District ES	269	280	11	104.09%	282	285	3	101.06%	289	276	-13	95.50%	269	275	6	102.23%	285	281	-4	98.60%
Fort Garrison ES	425	399	-26	93.88%	403	390	-13	96.77%	410	429	19	104.63%	450	451	1	100.22%	485	462	-23	95.26%
Franklin ES	487	510	23	104.72%	531	512	-19	96.42%	550	528	-22	96.00%	531	514	-17	96.80%	534	505	-29	94.57%
Fullerton ES	534	517	-17	96.82%	521	525	4	100.77%	528	541	13	102.46%	551	551	0	100.00%	578	570	-8	98.62%
Glenmar ES	367	430	63	117.17%	410	341	-69	83.17%	355	381	26	107.32%	393	375	-18	95.42%	381	382	1	100.26%
Glyndon ES	452	472	20	104.42%	465	476	11	102.37%	481	476	-5	98.96%	483	476	-7	98.55%	479	480	1	100.21%
Battle Monument School	52	49	-3	94.23%	49	53	4	108.16%	53	63	10	118.87%	73	70	-3	95.89%	70	79	9	112.86%

Cells with red highlight indicate where a school enrollment was greater than +/- 40 students from the one year projection.

Baltimore County Public Schools, Projection vs Enrollment 2007-2011, Elementary School Zone II

Elementary Zone II	2007				2008				2009				2010				2011			
	Project	Enroll	+/-	% Acc	Project	Enroll	+/-	% Acc	Project	Enroll	+/-	% Acc	Project	Enroll	+/-	% Acc	Project	Enroll	+/-	% Acc
Grange ES	363	366	3	100.83%	365	364	-1	99.73%	388	404	16	104.12%	403	388	-15	96.28%	401	389	-12	97.01%
Gunpowder ES	509	503	-6	98.82%	504	519	15	102.98%	550	518	-32	94.18%	518	517	-1	99.81%	507	505	-2	99.61%
Halethorpe ES	385	389	4	101.04%	379	405	26	106.86%	409	418	9	102.20%	430	439	9	102.09%	467	451	-16	96.57%
Halstead Academy	538	531	-7	98.70%	525	531	6	101.14%	536	500	-36	93.28%	486	458	-28	94.24%	458	433	-25	94.54%
Hampton ES	349	377	28	108.02%	420	406	-14	96.67%	432	451	19	104.40%	500	496	-4	99.20%	549	529	-20	96.36%
Harford Hills ES	370	354	-16	95.68%	341	332	-9	97.36%	327	339	12	103.67%	327	331	4	101.22%	339	350	11	103.24%
Hawthorne ES	569	571	2	100.35%	589	600	11	101.87%	604	578	-26	95.70%	583	551	-32	94.51%	536	551	15	102.80%
Hebbsville ES	448	471	23	105.13%	461	438	-23	95.01%	414	404	-10	97.58%	379	367	-12	96.83%	368	357	-11	97.01%
Hernwood ES	451	461	10	102.22%	427	434	7	101.64%	438	411	-27	93.84%	396	394	-2	99.49%	365	372	7	101.92%
Hillcrest ES	651	663	12	101.84%	678	656	-22	96.76%	681	697	16	102.35%	698	708	10	101.43%	727	752	25	103.44%
Jacksonville ES	525	560	35	106.67%	568	533	-35	93.84%	558	588	30	105.38%	589	582	-7	98.81%	586	594	8	101.37%
Johnnycake ES	572	591	19	103.32%	636	584	-52	91.82%	587	593	6	101.02%	587	597	10	101.70%	600	657	57	109.50%
Joppa View ES	575	571	-4	99.30%	595	617	22	103.70%	646	628	-18	97.21%	650	623	-27	95.85%	637	652	15	102.35%
Kingsville ES	351	352	1	100.28%	353	343	-10	97.17%	364	353	-11	96.98%	353	341	-12	96.60%	330	341	11	103.33%
Lansdowne ES	357	380	23	106.44%	382	392	10	102.62%	401	410	9	102.24%	423	429	6	101.42%	431	436	5	101.16%
Logan ES	524	514	-10	98.09%	496	512	16	103.23%	508	488	-20	96.06%	479	477	-2	99.58%	499	519	20	104.01%
Lutherville ES	460	459	-1	99.78%	469	491	22	104.69%	512	501	-11	97.85%	498	536	38	107.63%	565	562	-3	99.47%
Mars Estates ES	348	399	51	114.66%	398	378	-20	94.97%	378	378	0	100.00%	384	403	19	104.95%	406	390	-16	96.06%
Martin Blvd. ES	290	290	0	100.00%	284	290	6	102.11%	286	276	-10	96.50%	261	287	26	109.96%	295	279	-16	94.58%
McCormick ES	413	439	26	106.30%	441	390	-51	88.44%	386	335	-51	86.79%	322	385	63	119.57%	401	470	69	117.21%
Middleborough ES	295	298	3	101.02%	304	317	13	104.28%	319	319	0	100.00%	319	330	11	103.45%	360	334	-26	92.78%
Middlesex ES	519	518	-1	99.81%	520	475	-45	91.35%	480	511	31	106.46%	518	525	7	101.35%	528	530	2	100.38%
Milbrook ES	349	346	-3	99.14%	342	341	-1	99.71%	342	335	-7	97.95%	319	356	37	111.60%	373	337	-36	90.35%
New Town ES	601	680	79	113.14%	710	709	-1	99.86%	734	745	11	101.50%	784	799	15	101.91%	866	892	26	103.00%
Norwood ES	598	646	48	108.03%	652	584	-68	89.57%	510	595	85	116.67%	588	609	21	103.57%	623	601	-22	96.47%
Oakleigh ES	505	494	-11	97.82%	471	499	28	105.94%	495	485	-10	97.98%	477	500	23	104.82%	522	537	15	102.87%
Oliver Beach ES	244	274	30	112.30%	269	258	-11	95.91%	258	272	14	105.43%	279	269	-10	96.42%	268	269	1	100.37%
Orems ES	330	334	4	101.21%	335	349	14	104.18%	362	354	-8	97.79%	364	343	-21	94.23%	347	351	4	101.15%
Owings Mills ES	708	681	-27	96.19%	671	715	44	106.56%	728	758	30	104.12%	790	786	-4	99.49%	810	775	-35	95.68%
Padonia Intl. ES	324	330	6	101.85%	327	375	48	114.68%	411	411	0	100.00%	438	425	-13	97.03%	446	448	2	100.45%
Perry Hall ES	539	556	17	103.15%	557	559	2	100.36%	563	552	-11	98.05%	554	584	30	105.42%	620	603	-17	97.26%
Pine Grove ES	472	456	-16	96.61%	442	448	6	101.36%	442	501	59	113.35%	532	510	-22	95.86%	529	489	-40	92.44%
Pinewood ES	530	507	-23	95.66%	539	532	-7	98.70%	543	545	2	100.37%	556	563	7	101.26%	575	586	11	101.91%
Pleasant Plains ES	522	515	-7	98.66%	510	500	-10	98.04%	508	487	-21	95.87%	495	493	-2	99.60%	490	500	10	102.04%
Pot Springs ES	580	563	-17	97.07%	580	540	-40	93.10%	544	574	30	105.51%	602	606	4	100.66%	633	610	-23	96.37%
Imagine Discovery					0	465	465	NA	555	552	-3	99.46%	641	601	-40	93.76%	564	623	59	110.46%
Maiden Choice School	106	105	-1	99.06%	105	105	0	100.00%	105	112	7	106.67%	112	109	-3	97.32%	109	109	0	100.00%

Cells with red highlight indicate where a school enrollment was greater than +/- 40 students from the one year projection.

Baltimore County Public Schools, Projection vs Enrollment 2007-2011, Elementary School Zone III

Elementary Zone III	2007				2008				2009				2010				2011			
	Project	Enroll	+/-	% Acc	Project	Enroll	+/-	% Acc	Project	Enroll	+/-	% Acc	Project	Enroll	+/-	% Acc	Project	Enroll	+/-	% Acc
Powhatan ES	331	342	11	103.32%	346	329	-17	95.09%	333	318	-15	95.50%	312	296	-16	94.87%	285	280	-5	98.25%
Prettyboy ES	403	434	31	107.69%	445	459	14	103.15%	495	484	-11	97.78%	489	450	-39	92.02%	444	442	-2	99.55%
Randallstown ES	396	394	-2	99.49%	383	389	6	101.57%	382	394	12	103.14%	400	378	-22	94.50%	369	387	18	104.88%
Red House Run ES	482	488	6	101.24%	510	524	14	102.75%	566	573	7	101.24%	591	562	-29	95.09%	582	545	-37	93.64%
Reisterstown ES	475	473	-2	99.58%	457	506	49	110.72%	513	539	26	105.07%	555	540	-15	97.30%	560	531	-29	94.82%
Relay ES	429	437	8	101.86%	421	414	-7	98.34%	416	435	19	104.57%	453	469	16	103.53%	494	524	30	106.07%
Riderwood ES	472	513	41	108.69%	544	518	-26	95.22%	544	542	-2	99.63%	490	528	38	107.76%	531	506	-25	95.29%
Riverview ES	520	485	-35	93.27%	482	469	-13	97.30%	470	461	-9	98.09%	445	428	-17	96.18%	414	451	37	108.94%
Rodgers Forge ES	574	625	51	108.89%	695	709	14	102.01%	769	722	-47	93.89%	408	395	-13	96.81%	386	422	36	109.33%
Sandalwood ES	468	473	5	101.07%	473	462	-11	97.67%	478	494	16	103.35%	509	486	-23	95.48%	496	504	8	101.61%
Sandy Plains ES	542	547	5	100.92%	561	597	36	106.42%	655	580	-75	88.55%	590	600	10	101.69%	590	596	6	101.02%
Scotts Branch ES	526	482	-44	91.63%	471	512	41	108.70%	500	491	-9	98.20%	506	509	3	100.59%	500	554	54	110.80%
Seneca ES	433	408	-25	94.23%	415	392	-23	94.46%	356	356	0	100.00%	347	399	52	114.99%	392	406	14	103.57%
Seven Oaks ES	407	385	-22	94.59%	379	407	28	107.39%	401	413	12	102.99%	412	394	-18	95.63%	397	406	9	102.27%
Seventh District ES	390	391	1	100.26%	404	395	-9	97.77%	405	417	12	102.96%	416	404	-12	97.12%	404	420	16	103.96%
Shady Spring ES	600	577	-23	96.17%	572	595	23	104.02%	580	591	11	101.90%	604	620	16	102.65%	627	633	6	100.96%
Sparks ES	515	518	3	100.58%	520	517	-3	99.42%	543	555	12	102.21%	561	556	-5	99.11%	570	574	4	100.70%
Stoneleigh ES	650	623	-27	95.85%	645	594	-51	92.09%	624	622	-2	99.68%	635	629	-6	99.06%	659	675	16	102.43%
Summit Park ES	344	359	15	104.36%	374	361	-13	96.52%	373	368	-5	98.66%	376	393	17	104.52%	416	432	16	103.85%
Sussex ES	317	353	36	111.36%	339	363	24	107.08%	377	359	-18	95.23%	361	373	12	103.32%	410	391	-19	95.37%
Timber Grove ES	552	564	12	102.17%	563	601	38	106.75%	607	592	-15	97.53%	609	582	-27	95.57%	573	563	-10	98.25%
Timonium ES	434	433	-1	99.77%	434	434	0	100.00%	439	438	-1	99.77%	460	436	-24	94.78%	445	449	4	100.90%
Victory Villa ES	299	316	17	105.69%	312	310	-2	99.36%	317	315	-2	99.37%	330	337	7	102.12%	335	360	25	107.46%
Villa Cresta ES	519	548	29	105.59%	550	576	26	104.73%	611	586	-25	95.91%	583	602	19	103.26%	620	626	6	100.97%
Vincent Farm ES					417	500	83	119.90%	517	533	16	103.09%	552	570	18	103.26%	627	628	1	100.16%
Warren ES	351	360	9	102.56%	354	358	4	101.13%	378	381	3	100.79%	381	403	22	105.77%	423	427	4	100.95%
Wellwood ES	484	438	-46	90.50%	404	442	38	109.41%	445	441	-4	99.10%	446	413	-33	92.60%	416	462	46	111.06%
West Towson ES													422	437	15	103.55%	463	519	56	112.10%
Westchester ES	509	506	-3	99.41%	495	507	12	102.42%	519	534	15	102.89%	536	565	29	105.41%	594	584	-10	98.32%
Westowne ES	552	517	-35	93.66%	514	541	27	105.25%	547	548	1	100.18%	578	550	-28	95.16%	553	550	-3	99.46%
Winand ES	477	462	-15	96.86%	439	465	26	105.92%	478	464	-14	97.07%	487	451	-36	92.61%	452	541	89	119.69%
Winfield ES	470	447	-23	95.11%	480	437	-43	91.04%	434	460	26	105.99%	464	486	22	104.74%	513	460	-53	89.67%
Woodbridge ES	384	380	-4	98.96%	386	357	-29	92.49%	347	348	1	100.29%	325	345	20	106.15%	337	423	86	125.52%
Woodholme ES	723	715	-8	98.89%	754	730	-24	96.82%	761	773	12	101.58%	795	820	25	103.14%	839	781	-58	93.09%
Woodmoor ES	530	547	17	103.21%	535	495	-40	92.52%	488	484	-4	99.18%	470	460	-10	97.87%	459	527	68	114.81%
Ridge Ruxton School	122	122	0	100.00%	122	125	3	102.46%	125	112	-13	89.60%	112	110	-2	98.21%	110	111	1	100.91%
White Oak School	149	123	-26	82.55%	123	149	26	121.14%	149	97	-52	65.10%	97	62	-35	63.92%	62	75	13	120.97%

Cells with red highlight indicate where a school enrollment was greater than +/- 40 students from the one year projection.

Baltimore County Public Schools, Projection vs Enrollment 2007-2011, Middle School Zone

Middle School Zone	2007				2008				2009				2010				2011			
	Project	Enroll	+/-	% Acc	Project	Enroll	+/-	% Acc	Project	Enroll	+/-	% Acc	Project	Enroll	+/-	% Acc	Project	Enroll	+/-	% Acc
Arbutus Middle	817	820	3	100.37%	784	798	14	101.79%	775	753	-22	97.16%	727	705	-22	96.97%	709	734	25	103.53%
Catonsville Middle	680	685	5	100.74%	667	667	0	100.00%	650	641	-9	98.62%	658	683	25	103.80%	700	721	21	103.00%
Cockeysville Middle	943	829	-114	87.91%	834	813	-21	97.48%	786	754	-32	95.93%	749	768	19	102.54%	754	742	-12	98.41%
Deep Creek Middle	846	844	-2	99.76%	831	793	-38	95.43%	777	767	-10	98.71%	795	793	-2	99.75%	813	803	-10	98.77%
Deer Park Middle	1147	1134	-13	98.87%	1098	1151	53	104.83%	1183	1114	-69	94.17%	1115	1176	61	105.47%	1197	1235	38	103.17%
Dumbarton Middle	905	983	78	108.62%	969	944	-25	97.42%	1002	922	-80	92.02%	888	872	-16	98.20%	872	916	44	105.05%
Dundalk Middle	470	434	-36	92.34%	425	462	37	108.71%	478	447	-31	93.51%	469	467	-2	99.57%	475	463	-12	97.47%
Franklin Middle	1371	1369	-2	99.85%	1317	1297	-20	98.48%	1297	1328	31	102.39%	1310	1284	-26	98.02%	1306	1292	-14	98.93%
General John Stricker Middle	810	790	-20	97.53%	748	794	46	106.15%	788	786	-2	99.75%	763	794	31	104.06%	819	792	-27	96.70%
Golden Ring Middle	777	699	-78	89.96%	665	661	-4	99.40%	640	637	-3	99.53%	612	647	35	105.72%	640	591	-49	92.34%
Hereford Middle	1011	1044	33	103.26%	1047	1008	-39	96.28%	975	966	-9	99.08%	949	948	-1	99.89%	954	926	-28	97.06%
Holabird Middle	720	670	-50	93.06%	672	652	-20	97.02%	623	643	20	103.21%	653	640	-13	98.01%	647	652	5	100.77%
Lansdowne Middle	669	698	29	104.33%	725	673	-52	92.83%	670	675	5	100.75%	667	610	-57	91.45%	618	635	17	102.75%
Loch Raven Academy	702	576	-126	82.05%	584	584	0	100.00%	564	582	18	103.19%	608	669	61	110.03%	686	695	9	101.31%
Middle River Middle	830	868	38	104.58%	884	896	12	101.36%	895	910	15	101.68%	910	882	-28	96.92%	877	856	-21	97.61%
Old Court Middle	532	552	20	103.76%	476	556	80	116.81%	579	581	2	100.35%	571	590	19	103.33%	587	572	-15	97.44%
Parkville Middle	1098	1102	4	100.36%	1072	1042	-30	97.20%	1033	1030	-3	99.71%	1031	1040	9	100.87%	1036	1065	29	102.80%
Perry Hall Middle	1475	1498	23	101.56%	1537	1521	-16	98.96%	1488	1519	31	102.08%	1551	1578	27	101.74%	1632	1607	-25	98.47%
Pikesville Middle	935	917	-18	98.07%	900	917	17	101.89%	927	975	48	105.18%	1005	976	-29	97.11%	985	1017	32	103.25%
Pine Grove Middle	1044	1038	-6	99.43%	1021	1009	-12	98.82%	975	907	-68	93.03%	861	883	22	102.56%	887	898	11	101.24%
Ridgely Middle	1094	1064	-30	97.26%	1046	1052	6	100.57%	1010	1011	1	100.10%	988	1034	46	104.66%	1067	1081	14	101.31%
Southwest Academy	864	806	-58	93.29%	719	727	8	101.11%	708	748	40	105.65%	720	729	9	101.25%	746	746	0	100.00%
Sparrows Point Middle	532	481	-51	90.41%	454	464	10	102.20%	450	458	8	101.78%	451	480	29	106.43%	488	507	19	103.89%
Stemmers Run Middle	757	713	-44	94.19%	722	703	-19	97.37%	688	709	21	103.05%	718	729	11	101.53%	713	681	-32	95.51%
Sudbrook Middle	1035	1004	-31	97.00%	956	1007	51	105.33%	1007	1024	17	101.69%	1045	1037	-8	99.23%	1019	1015	-4	99.61%
Windsor Mill Middle	683	601	-82	87.99%	620	618	-2	99.68%	620	605	-15	97.58%	589	624	35	105.94%	614	535	-79	87.13%
Woodlawn Middle	700	687	-13	98.14%	647	669	22	103.40%	666	642	-24	96.40%	593	634	41	106.91%	674	634	-40	94.07%

Cells with red highlight indicate where a school enrollment was greater than +/- 40 students from the one year projection.

Baltimore County Public Schools, Projection vs Enrollment 2007-2011, High School Zone

High School Zone	2007				2008				2009				2010				2011			
	Project	Enroll	+/-	% Acc	Project	Enroll	+/-	% Acc	Project	Enroll	+/-	% Acc	Project	Enroll	+/-	% Acc	Project	Enroll	+/-	% Acc
Catonsville High	1735	1708	-27	98.44%	1745	1756	11	100.63%	1699	1735	36	102.12%	1748	1795	47	102.69%	1802	1757	-45	97.50%
Chesapeake High	1059	1026	-33	96.88%	1043	1062	19	101.82%	1061	1071	10	100.94%	1056	1108	52	104.92%	1112	1090	-22	98.02%
Dulaney High	1946	1925	-21	98.92%	1901	1857	-44	97.69%	1839	1879	40	102.18%	1867	1866	-1	99.95%	1837	1858	21	101.14%
Dundalk High	1299	1238	-61	95.30%	1161	1223	62	105.34%	1259	1240	-19	98.49%	1213	1228	15	101.24%	1215	1223	8	100.66%
Eastern Tech High	1251	1236	-15	98.80%	1215	1263	48	103.95%	1246	1283	37	102.97%	1287	1272	-15	98.83%	1297	1256	-41	96.84%
Franklin High	1581	1591	10	100.63%	1570	1578	8	100.51%	1566	1546	-20	98.72%	1541	1575	34	102.21%	1532	1524	-8	99.48%
George Washington Carver Center	714	708	-6	99.16%	725	736	11	101.52%	748	746	-2	99.73%	739	752	13	101.76%	764	757	-7	99.08%
Hereford High	1380	1395	15	101.09%	1381	1380	-1	99.93%	1379	1387	8	100.58%	1394	1415	21	101.51%	1417	1378	-39	97.25%
Kenwood High	1826	1793	-33	98.19%	1641	1755	114	106.95%	1818	1762	-56	96.92%	1763	1731	-32	98.18%	1692	1732	40	102.36%
Lansdowne High	1279	1317	38	102.97%	1328	1245	-83	93.75%	1221	1285	64	105.24%	1307	1249	-58	95.56%	1172	1175	3	100.26%
Loch Raven High	1197	1098	-99	91.73%	955	1043	88	109.21%	1055	1027	-28	97.35%	1008	1002	-6	99.40%	973	942	-31	96.81%
Milford Mill Academy	1583	1537	-46	97.09%	1464	1405	-59	95.97%	1376	1289	-87	93.68%	1237	1359	122	109.86%	1356	1373	17	101.25%
New Town HS	1024	963	-61	94.04%	864	981	117	113.54%	981	957	-24	97.55%	945	894	-51	94.60%	868	869	1	100.12%
Overlea High	1371	1279	-92	93.29%	1248	1215	-33	97.36%	1245	1073	-172	86.18%	956	953	-3	99.69%	880	915	35	103.98%
Owings Mills High	1091	1086	-5	99.54%	1036	1037	1	100.10%	1033	1015	-18	98.26%	1007	1015	8	100.79%	1003	968	-35	96.51%
Parkville High	1941	1882	-59	96.96%	1789	1721	-68	96.20%	1732	1693	-39	97.75%	1582	1620	38	102.40%	1575	1494	-81	94.86%
Patapsco High	1553	1513	-40	97.42%	1446	1483	37	102.56%	1468	1462	-6	99.59%	1466	1471	5	100.34%	1482	1444	-38	97.44%
Perry Hall High	2321	2321	0	100.00%	2227	2192	-35	98.43%	2199	2265	66	103.00%	2300	2229	-71	96.91%	2228	2199	-29	98.70%
Pikesville High	1005	966	-39	96.12%	919	921	2	100.22%	922	913	-9	99.02%	919	873	-46	94.99%	857	898	41	104.78%
Randallstown High	1230	1272	42	103.41%	1227	1231	4	100.33%	1192	1208	16	101.34%	1200	1111	-89	92.58%	1114	1095	-19	98.29%
Sparrows Point High	822	803	-19	97.69%	808	802	-6	99.26%	767	792	25	103.26%	760	765	5	100.66%	758	795	37	104.88%
Towson High	1451	1442	-9	99.38%	1425	1407	-18	98.74%	1397	1384	-13	99.07%	1396	1395	-1	99.93%	1386	1417	31	102.24%
Western Tech	944	936	-8	99.15%	903	885	-18	98.01%	860	873	13	101.51%	885	890	5	100.56%	885	891	6	100.68%
Woodlawn High	1883	1881	-2	99.89%	1775	1767	-8	99.55%	1717	1641	-76	95.57%	1568	1634	66	104.21%	1570	1504	-66	95.80%

Cells with red highlight indicate where a school enrollment was greater than +/- 40 students from the one year projection.