

# UPDATE ON MAGNET PROGRAMS

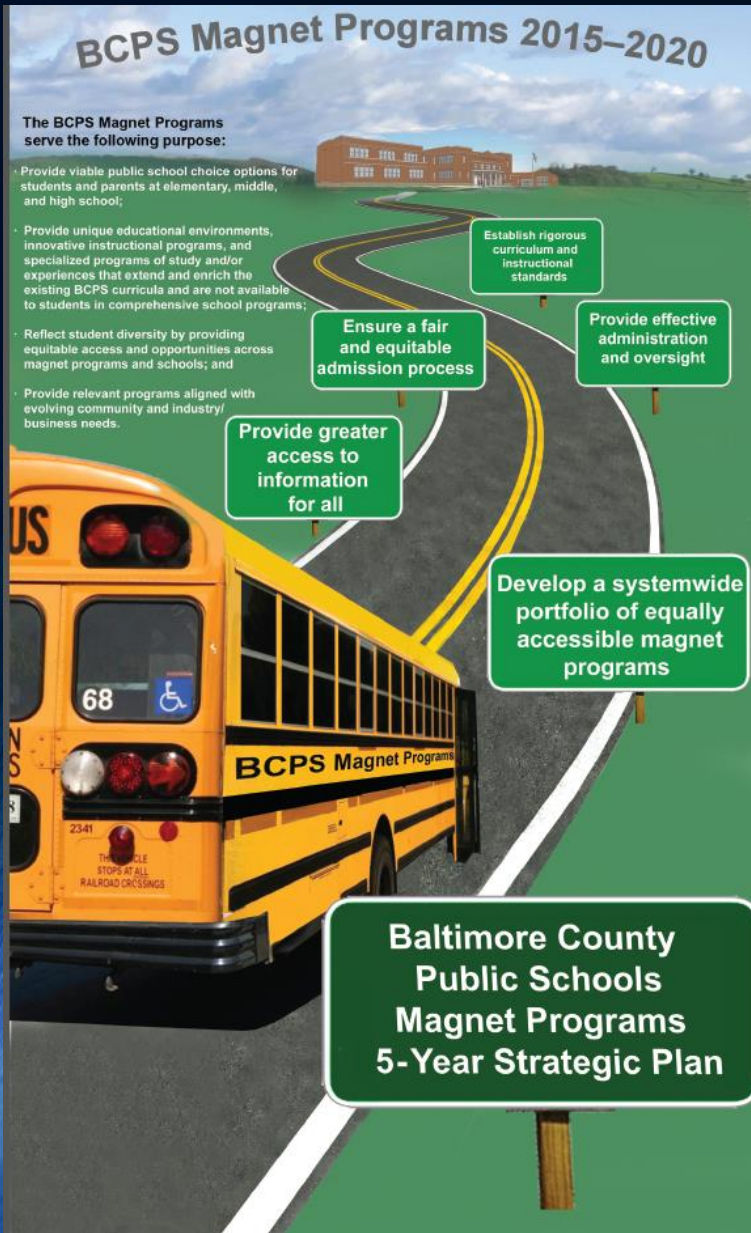
May 19, 2015



# MAGNET AUDIT FINDINGS

1. Vision for Magnet program
2. Magnet program offerings
3. Program implementation
4. Central administration and oversight
5. Access to Magnet programs
6. Participation in Magnets by subgroups
7. Admission criteria





**Goal 1:** Develop a systemwide portfolio of equally accessible magnet programs

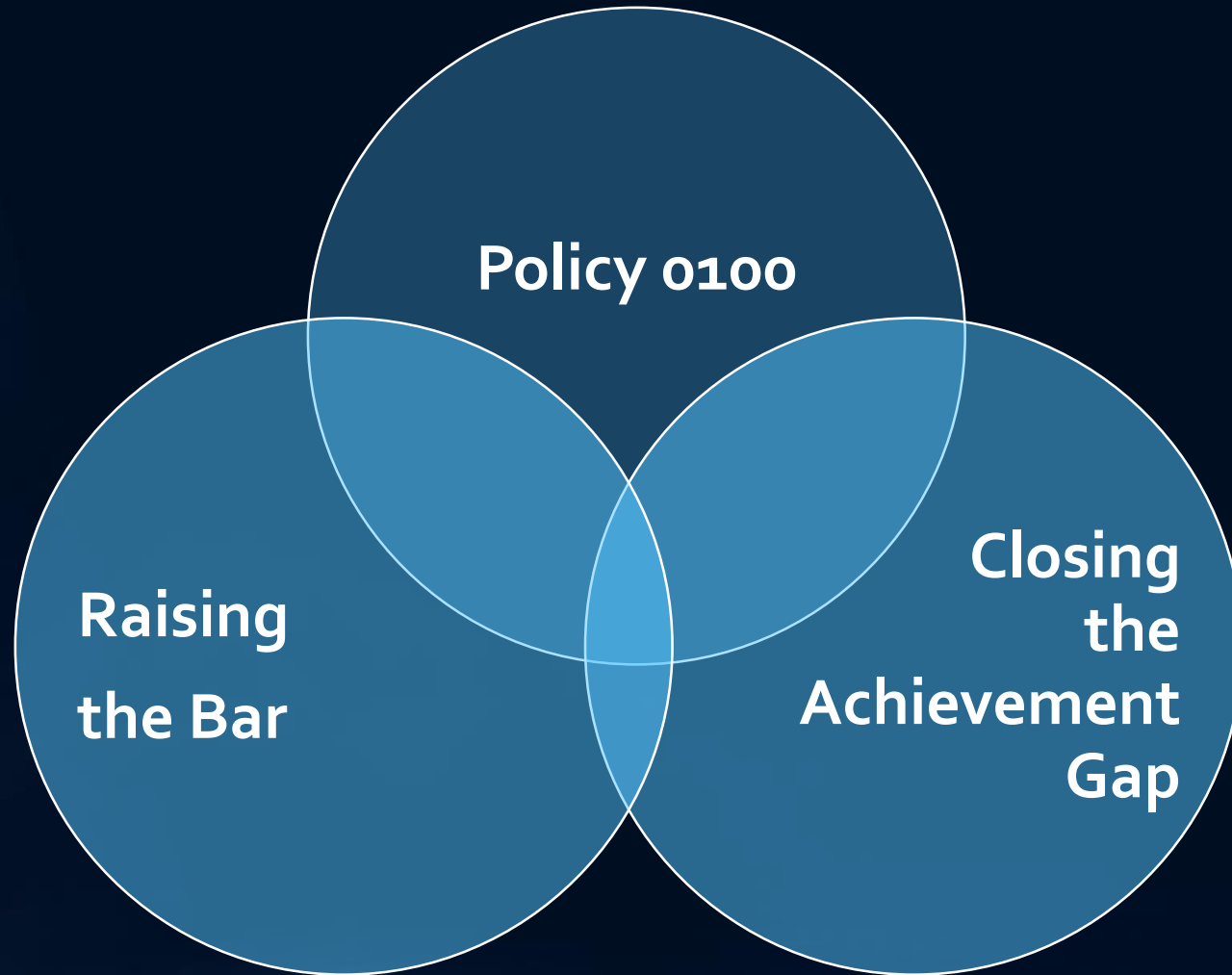
**Goal 2:** Provide greater access to magnet program information for all segments of the BCPS community

**Goal 3:** Ensure a fair and equitable admissions process for all magnet programs

**Goal 4:** Provide effective administration of magnet programs

**Goal 5:** Establish rigorous curriculum and instructional standards for all magnet programs

# FOCUS ON SYSTEMIC EQUITY DEVELOPMENT



# THREE-YEAR PROFESSIONAL DEVELOPMENT EFFORT

- Board of Education
- Superintendent's Cabinet
- Executive Staff
- Divisions of Curriculum and Instruction and Division of Business Services
- Departments of Human Resources, Department of Research and Accountability and the Department of Communications and Community Outreach

# PROFESSIONAL DEVELOPMENT PURPOSE

Build capacity of staff across the organization  
to apply “the equity lens”



TEAM  
BCPS

# PROGRAM FINDINGS

## DEFINITION & PURPOSE

# MAGNET DEFINITION

**BCPS Magnet programs are theme-related curricula and instructional programs that**

- are not available as comprehensive school program options;
- serve as incubators for innovative instructional practices;
- draw students across school attendance boundaries, be in accordance with state rated capacity; and
- are accessed through a centralized application and admissions process.



# MAGNET PURPOSE STATEMENT

The purpose of magnet programs is to:

- provide parents and students with viable public school choice options at elementary, middle, and high school;
- provide unique educational environments, innovative instructional programs, and specialized programs of study and/or experiences that address students' interests, talents, and abilities; that extend and enrich the existing BCPS curricula; and that are not available in comprehensive school programs;
- promote student diversity\* by providing equitable access and opportunities across magnet programs and schools; and
- provide relevant programs aligned with evolving community and industry/business needs.

\*As defined by the Board of Education, diversity includes racial, ethnic, economic, gender, and special needs populations.

# ADMINISTRATION, OVERSIGHT & MONITORING TASK FORCE FINDINGS

- Policy and Rule 6400
- Programmatic Budget Oversight
- Budget Monitoring
- Enrollment Monitoring
- Staffing Allocations
- Implementation Oversight
- Program Evaluation



# OUTREACH MARKETING & RECRUITMENT TASK FORCE FINDINGS

- Subgroup Enrollment
- Special Education Enrollment
- Marketing Strategies



# CURRICULUM & INSTRUCTIONAL STANDARDS TASK FORCE FINDINGS



- Curricular Consistency
- Teacher Expertise
- Feeder Patterns
- Program Offerings

## **Elementary School Magnet Programs**

- Arts Exposure
- STEM Exposure

## **Middle School Magnet Programs**

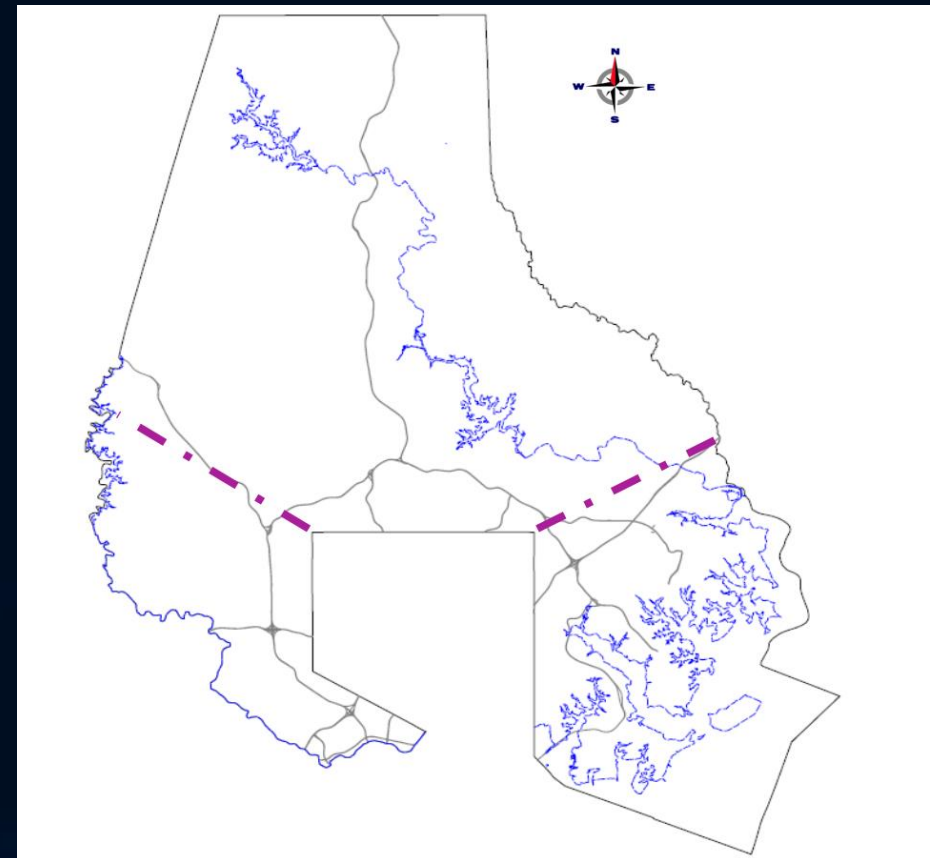
- Arts/STEM  
Exploration
- World  
Language/STEM  
Exploration

## **High School Magnet Programs**

- National Security/World  
Languages
- Arts
- Law & Public Policy
- Sports Science & Mass  
Communications
- CTE
- Environmental Studies

# EQUITABLE ACCESS TASK FORCE FINDINGS

- Transportation
- Program Placement



# ADMISSIONS PROCESS TASK FORCE FINDINGS

- Sibling Priority
- Applications
- Assessments
- Placements



# MAGNET TASK FORCE NEXT STEPS

- Explore and define elementary exposure model
- Explore and define middle school exploration model
- Study of Wellwood International School program
- Study of the IB program
- Conduct transportation study
- Apply for federal magnet funds
- Implement revised application processes



# MAGNET UPDATES

## Elementary Schools

- Chatsworth Elementary - retain magnet status
- Cromwell Valley Elementary - retains magnet status with a partial boundary to address walkers

## High Schools

- Eastern Technical High School - phase out of the Automotive program
- Patapsco High School - Phase in Literary Arts
- The George Washington Carver Center for Arts and Technology – Phase in Instrumental Music
- Milford Mill Academy – Phase in Milford Mill Academy & Center for the Arts



TEAM  
BCPS

# SUPERINTENDENT'S RECOMMENDATIONS FOR BOARD ACTION

# MAGNET RECOMMENDATIONS FOR BOARD OF EDUCATION ACTION

## Elementary Schools

- Church Lane Elementary Technology School – phase out magnet status
- Halstead Academy – phase out magnet status
- Lutherville Laboratory School – phase out magnet status

## Middle Schools

- Old Court Middle School – establish magnet program

# COMMUNITY INPUT

May 19 – June 2

[boe@bcps.org](mailto:boe@bcps.org)

