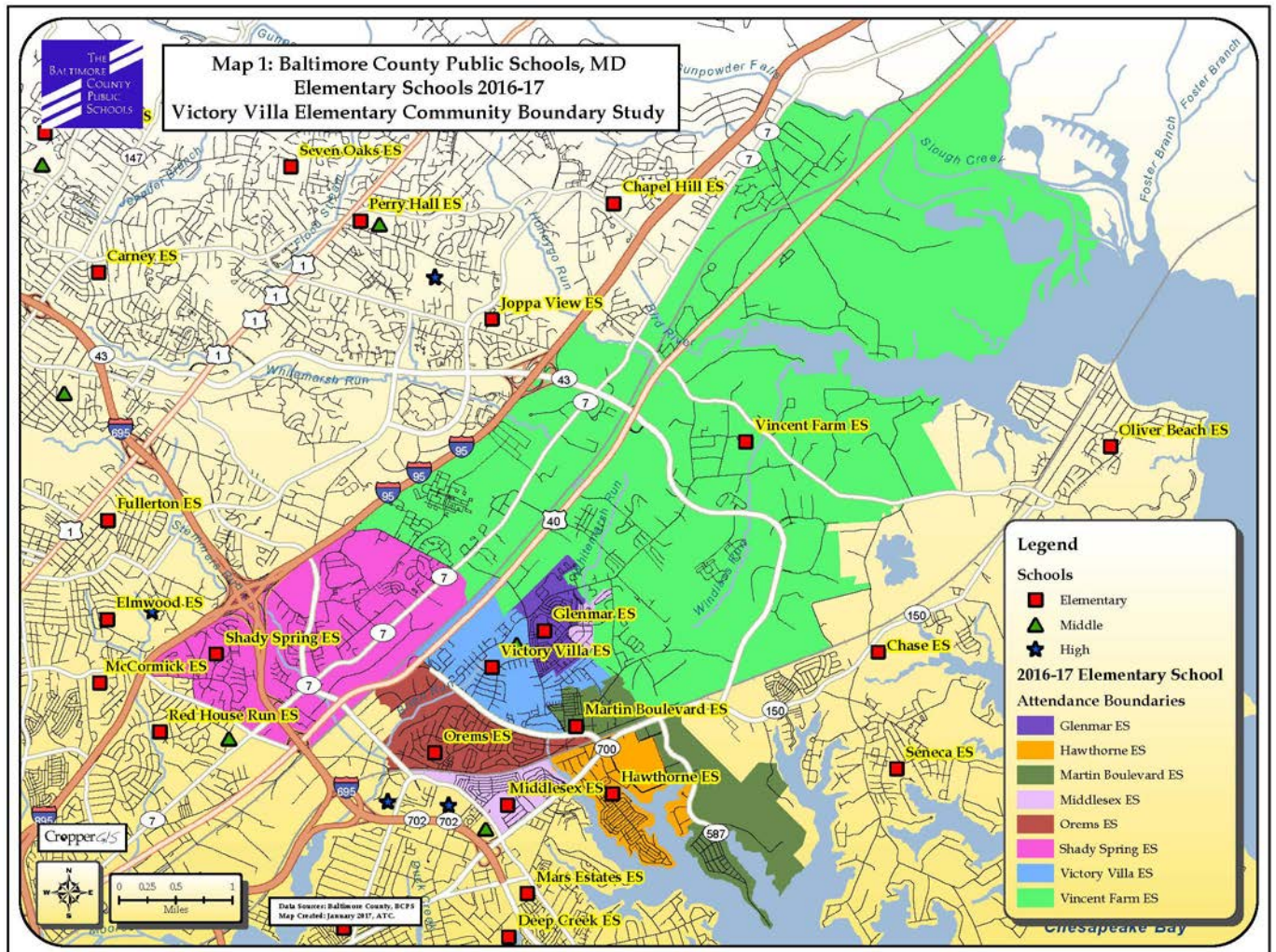


Baltimore County Public Schools Victory Villa Elementary Community Boundary Change Study

DRAFT Boundary Options A-F and Statistics



2016-17 Capacity, 2016-17 Official Enrollment, Live Attend Counts, and Building Utilizations

The following are school capacity statistics for review. These statistics will be utilized to compare and assess school boundary options.

The table on this page details the State Rated Capacity (number of students each building can hold) for each building, as well as enrollment and live attend counts.

The enrollment column shows the number of study area students enrolled in each building as of September 30, 2016. The State of Maryland defines the State Rated Capacity as “the number of students that the IAC or its designee determines that an individual school has the physical capacity to enroll.”

The K-5 “Live and Attend In” column reflects the number of K-5 grade students (BCPS) that live and attend within each of the 2016-17 Victory Villa Elementary Community attendance boundaries. The “Live Out and Attend In” column shows those K-5th graders that live outside of their school’s 2016-17 attendance boundary but attend that school.

Utilization is a term that defines how much of a school building is being used. Utilization is the enrollment divided by the state rated capacity (SRC), described as a percentage. Looking at the enrollment utilizations, it is evident that there is a need to add capacity to the area to bring schools at or below 100% utilization.

The “2016-17 PS/PK-5 Grade Enrollment Over/Under Capacity” column shows the number of FTE PS/PK-5 students over the state rated capacity for each building. Full Time Equivalent (FTE) enrollment counts 100% of students in Grades kindergarten through 5, but only 50% of students in prekindergarten and preschool because they are half-day programs and two sessions can use one classroom (one in the AM and the other in the PM). Hawthorne ES has all day PK but half day PS and the counts reflect this. The table shows that most schools within the study area are over capacity, with Shady Spring ES being the most over capacity.

The total utilization at the bottom of the page shows 113%, which does not include the newly reconstructed and enlarged school at Victory Villa Elementary. If this was included in this table, the total utilization of the study area would be 101%.

ES name	2016 State Rated Capacity (SRC)	Future Capacity	2016-17 (Sept 30th) FTE PS/PK-5 Grade Enrollment ¹	2016-17 (Sept 30th) FTE PS/PK-5 Grade Enrollment Utilization	K-5 Live and Attend In	K-5 Live Out Attend In	2016-17 FTE PS/PK-5 Grade Enrollment Over/Under Capacity	2016-17 (Sept 30th) Total Headcount PS/PK Enrollment	2016-17 (Sept 30th) FTE PS/PK Enrollment ¹
Glenmar ES	371	371	459	124%	427	13	88	38	19
Hawthorne ES	587	587	508	87%	388	17	-79	110	103
Martin Boulevard ES	291	291	292	100%	240	35	1	34	17
Middlesex ES	517	517	520	101%	486	8	3	50	26
Orems ES	313	313	333	106%	219	90	20	47	24
Shady Spring ES	499	499	657	132%	618	17	158	43	22
Victory Villa ES	326	735	411	126%	367	28	85	31	16
Vincent Farm ES	699	699	884	126%	836	29	185	38	19
Total	3,603	4,012	4,064	113%	3,581	237	461	391	246

Counts based on Official September 30, 2016 Enrollment

¹ Full Time Equivalent (FTE) enrollment factors 100% of students in Grades kindergarten through 5, and 50% of students in prekindergarten and preschool because they are half-day programs and two sessions can use one classroom, one in the AM and the other in the PM. Hawthorne ES has all day PK but half day PS and the counts reflect this.

DRAFT Options A-F

The following tables present DRAFT options for the committee’s review. Keep in mind that these options are only starting points for discussion. Any of the following options can be changed based on feedback from the committee, public, and BCPS administration.

Options A-F Enrollment Estimates

The following tables reflect the DRAFT options enrollment estimates. The estimated enrollment is calculated by adding the 2016-17 FTE PS/PK students to their 2016-17 school, plus the K-5th students that “Live Out and Attend In” a 2016-17 school, plus the total number of live in K-5th grade students within each new DRAFT option zone that “Live and Attend In” during the 2016-17 school year. The estimated enrollment for Hawthorne ES includes the total headcount of PK students and the FTE PS students due to the all day PK pilot program at Hawthorne ES.

ES name	2016 State Rated Capacity (SRC)	Future Capacity	2016-17 (Sept 30th) FTE PS/PK-5 Grade Enrollment ¹	Option A Estimated Enrollment ²	Option B Estimated Enrollment ²	Option C Estimated Enrollment ²	Option D1 Estimated Enrollment ²	Option E1 Estimated Enrollment ²	Option F Estimated Enrollment ²
Glenmar ES	371	371	459	374	346	346	346	346	346
Hawthorne ES	587	587	508	542	542	523	523	523	523
Martin Boulevard ES	291	291	292	298	306	306	308	308	308
Middlesex ES	517	517	520	480	480	433	473	373	498
Orems ES	313	313	333	296	316	398	398	354	388
Shady Spring ES	499	499	657	510	544	528	528	586	528
Victory Villa ES	326	735	411	731	728	717	717	757	702
Vincent Farm ES	699	699	884	833	802	813	771	817	771
Total	3,603	4,012	4,064	4,064	4,064	4,064	4,064	4,064	4,064

Counts based on Official September 30, 2016 Enrollment

¹ Full Time Equivalent (FTE) enrollment factors 100% of students in Grades kindergarten through 5, and 50% of students in prekindergarten and preschool because they are half-day programs and two sessions can use one classroom, one in the AM and the other in the PM. Hawthorne ES has all day PK but half day PS and the counts reflect this.

² The estimated enrollment is calculated by adding the 2016-17 FTE PS/PK students to their 2016-17 school, plus the K-5th students that “Live Out and Attend In” a 2016-17 school, plus the total number of live in K-5th grade students within each new DRAFT option zone that “Live and Attend In” during the 2016-17 school year. The estimated enrollment for Hawthorne ES includes the total headcount of PK students and the FTE PS students due to the all day PK pilot program at Hawthorne ES.

Options A-F: Utilization Estimates

The following tables reflect the DRAFT options building utilization and over/under estimates. The utilizations are based on PS/PK-5 grade estimated enrollment counts versus the proposed future capacity. The over/under counts reflect how many seats are available at each school for that option. Negative numbers reflect available seats, and positive numbers are the total over capacity.

ES name	2016 State Rated Capacity (SRC)	Future Capacity	2016-17 (Sept 30th) FTE PS/PK-5 Enrollment		Option A Estimated Utilization		Option B Estimated Utilization		Option C Estimated Utilization	
			+/-	%	+/-	%	+/-	%	+/-	%
Glenmar ES	371	371	88	124%	3	101%	-25	93%	-25	93%
Hawthorne ES	587	587	-79	87%	-45	92%	-45	92%	-64	89%
Martin Boulevard ES	291	291	1	100%	7	102%	15	105%	15	105%
Middlesex ES	517	517	3	101%	-37	93%	-37	93%	-84	84%
Orems ES	313	313	20	106%	-17	95%	3	101%	85	127%
Shady Spring ES	499	499	158	132%	11	102%	45	109%	29	106%
Victory Villa ES	326	735	85	126%	-4	99%	-7	99%	-18	98%
Vincent Farm ES	699	699	185	126%	134	119%	103	115%	114	116%
Total	3,603	4,012	461	113%	52	101%	52	101%	52	101%

ES name	2016 State Rated Capacity (SRC)	Future Capacity	2016-17 (Sept 30th) FTE PS/PK-5 Enrollment		Option D1 Estimated Utilization		Option E1 Estimated Utilization		Option F Estimated Utilization	
			+/-	%	+/-	%	+/-	%	+/-	%
Glenmar ES	371	371	88	124%	-25	93%	-25	93%	-25	93%
Hawthorne ES	587	587	-79	87%	-64	89%	-64	89%	-64	89%
Martin Boulevard ES	291	291	1	100%	17	106%	17	106%	17	106%
Middlesex ES	517	517	3	101%	-44	91%	-144	72%	-19	96%
Orems ES	313	313	20	106%	85	127%	41	113%	75	124%
Shady Spring ES	499	499	158	132%	29	106%	87	117%	29	106%
Victory Villa ES	326	735	85	126%	-18	98%	22	103%	-33	96%
Vincent Farm ES	699	699	185	126%	72	110%	118	117%	72	110%
Total	3,603	4,012	461	113%	52	101%	52	101%	52	101%

Counts based on Official September 30, 2016 Enrollment

¹ Full Time Equivalent (FTE) enrollment factors 100% of students in Grades kindergarten through 5, and 50% of students in prekindergarten and preschool because they are half-day programs and two sessions can use one classroom, one in the AM and the other in the PM. Hawthorne ES has all day PK but half day PS and the counts reflect this.

² The estimated enrollment is calculated by adding the 2016-17 FTE PS/PK students to their 2016-17 school, plus the K-5th students that "Live Out and Attend In" a 2016-17 school, plus the total number of live in K-5th grade students within each new DRAFT option zone that "Live and Attend In" during the 2016-17 school year. The estimated enrollment for Hawthorne ES includes the total headcount of PK students and the FTE PS students due to the all day PK pilot program at Hawthorne ES.

Options A-F: Demographics

The following tables reflect the DRAFT options minority percentages for the total headcount for 2016-17 and Options.

ES name	Percent Minority						
	2016-17 Total PS/PK-5th	Option A ³	Option B ³	Option C ³	Option D1 ³	Option E1 ³	Option F ³
Glenmar ES	91%	90%	90%	90%	90%	90%	90%
Hawthorne ES	68%	65%	65%	66%	66%	66%	66%
Martin Boulevard ES	61%	67%	67%	67%	63%	63%	63%
Middlesex ES	64%	44%	44%	47%	49%	49%	54%
Orems ES	28%	47%	47%	45%	45%	32%	36%
Shady Spring ES	90%	92%	92%	92%	92%	92%	92%
Victory Villa ES	63%	73%	74%	73%	73%	73%	74%
Vincent Farm ES	49%	49%	48%	49%	50%	51%	50%
Total	65%	65%	65%	65%	65%	65%	65%

Counts based on Official September 30, 2016 Enrollment

³ The Free Reduced Lunch and Minority counts are based on the total headcount and not the FTE.

Options A-F: Demographics (Continued)

The following tables reflect the DRAFT options free-reduced lunch percentages for the total headcount for 2016-17 and Options.

ES name	Free-Reduced Lunch Percentages						
	2016-17 Total PS/PK-5th	Option A ³	Option B ³	Option C ³	Option D1 ³	Option E1 ³	Option F ³
Glenmar ES	67%	75%	61%	61%	61%	61%	61%
Hawthorne ES	60%	60%	60%	60%	60%	60%	60%
Martin Boulevard ES	78%	80%	80%	80%	73%	73%	73%
Middlesex ES	73%	68%	68%	69%	70%	69%	68%
Orems ES	51%	47%	51%	51%	51%	51%	51%
Shady Spring ES	75%	78%	76%	78%	78%	76%	78%
Victory Villa ES	64%	64%	70%	71%	71%	71%	71%
Vincent Farm ES	32%	30%	29%	29%	30%	32%	30%
Total	60%	60%	60%	60%	60%	60%	60%

Counts based on Official September 30, 2016 Enrollment

³ The Free Reduced Lunch and Minority counts are based on the total headcount and not the FTE.

Options A-F: Student Impacts

The following tables reflect the DRAFT options in terms of student impacts. The first table shows the total number of students impacted (moved) in each option. The following tables show the number of students who move or do not for each school in each scenario.

Student Impact Estimates	
Option	Total K-5 Live and Attend In Students Impacted
Option A	834
Option B	759
Option C	741
Option D1	783
Option E1	625
Option F	808

2016-17 ES Boundary	ES Option A Boundary	Total K-5 Live and Attend In Students
Glenmar ES	Glenmar ES	265
Glenmar ES	Victory Villa ES	162
Hawthorne ES	Hawthorne ES	388
Martin Boulevard ES	Hawthorne ES	34
Martin Boulevard ES	Martin Boulevard ES	206
Middlesex ES	Glenmar ES	77
Middlesex ES	Middlesex ES	278
Middlesex ES	Victory Villa ES	107
Middlesex ES	Vincent Farm ES	24
Orems ES	Middlesex ES	130
Orems ES	Orems ES	89
Shady Spring ES	Orems ES	93
Shady Spring ES	Shady Spring ES	471
Shady Spring ES	Victory Villa ES	54
Victory Villa ES	Martin Boulevard ES	40
Victory Villa ES	Middlesex ES	38
Victory Villa ES	Victory Villa ES	289
Vincent Farm ES	Victory Villa ES	75
Vincent Farm ES	Vincent Farm ES	761

2016-17 ES Boundary	ES Option B Boundary	Total K-5 Live and Attend In Students
Glenmar ES	Glenmar ES	314
Glenmar ES	Victory Villa ES	113
Hawthorne ES	Hawthorne ES	388
Martin Boulevard	Hawthorne ES	34
Martin Boulevard	Martin Boulevard ES	206
Middlesex ES	Middlesex ES	278
Middlesex ES	Victory Villa ES	208
Orems ES	Middlesex ES	130
Orems ES	Orems ES	89
Shady Spring ES	Orems ES	113
Shady Spring ES	Shady Spring ES	505
Victory Villa ES	Martin Boulevard ES	41
Victory Villa ES	Middlesex ES	38
Victory Villa ES	Victory Villa ES	288
Vincent Farm ES	Martin Boulevard ES	7
Vincent Farm ES	Victory Villa ES	75
Vincent Farm ES	Vincent Farm ES	754

Key: Green represents K-5 “Live and Attend In” students who live in the boundary and are not impacted by the option. Pink represents the number of K-5 “Live and Attend In” students who live in the boundary and are impacted by the option.

Options A-F: Student Impacts (Continued)

2016-17 ES Boundary	ES Option C Boundary	Total K-5 Live and Attend In Students
Glenmar ES	Glenmar ES	314
Glenmar ES	Victory Villa ES	113
Hawthorne ES	Hawthorne ES	369
Hawthorne ES	Middlesex ES	19
Martin Boulevard ES	Hawthorne ES	34
Martin Boulevard ES	Martin Boulevard ES	206
Middlesex ES	Middlesex ES	278
Middlesex ES	Victory Villa ES	184
Middlesex ES	Vincent Farm ES	24
Orems ES	Middlesex ES	64
Orems ES	Orems ES	155
Shady Spring ES	Orems ES	129
Shady Spring ES	Shady Spring ES	489
Victory Villa ES	Martin Boulevard ES	41
Victory Villa ES	Middlesex ES	38
Victory Villa ES	Victory Villa ES	288
Vincent Farm ES	Martin Boulevard ES	7
Vincent Farm ES	Victory Villa ES	88
Vincent Farm ES	Vincent Farm ES	741

2016-17 ES Boundary	ES Option D1 Boundary	Total K-5 Live and Attend In Students
Glenmar ES	Glenmar ES	314
Glenmar ES	Victory Villa ES	113
Hawthorne ES	Hawthorne ES	369
Hawthorne ES	Middlesex ES	19
Martin Boulevard ES	Hawthorne ES	34
Martin Boulevard ES	Martin Boulevard ES	206
Middlesex ES	Middlesex ES	278
Middlesex ES	Victory Villa ES	184
Middlesex ES	Vincent Farm ES	24
Orems ES	Middlesex ES	64
Orems ES	Orems ES	155
Shady Spring ES	Orems ES	129
Shady Spring ES	Shady Spring ES	489
Victory Villa ES	Martin Boulevard ES	1
Victory Villa ES	Middlesex ES	78
Victory Villa ES	Victory Villa ES	288
Vincent Farm ES	Martin Boulevard ES	49
Vincent Farm ES	Victory Villa ES	88
Vincent Farm ES	Vincent Farm ES	699

2016-17 ES Boundary	ES Option E1 Boundary	Total K-5 Live and Attend In Students
Glenmar ES	Glenmar ES	314
Glenmar ES	Victory Villa ES	113
Hawthorne ES	Hawthorne ES	369
Hawthorne ES	Middlesex ES	19
Martin Boulevard ES	Hawthorne ES	34
Martin Boulevard ES	Martin Boulevard ES	206
Middlesex ES	Middlesex ES	278
Middlesex ES	Victory Villa ES	184
Middlesex ES	Vincent Farm ES	24
Orems ES	Middlesex ES	4
Orems ES	Orems ES	215
Shady Spring ES	Orems ES	25
Shady Spring ES	Shady Spring ES	547
Shady Spring ES	Vincent Farm ES	46
Victory Villa ES	Martin Boulevard ES	1
Victory Villa ES	Middlesex ES	38
Victory Villa ES	Victory Villa ES	328
Vincent Farm ES	Martin Boulevard ES	49
Vincent Farm ES	Victory Villa ES	88
Vincent Farm ES	Vincent Farm ES	699

2016-17 ES Boundary	ES Option F Boundary	Total K-5 Live and Attend In Students
Glenmar ES	Glenmar ES	314
Glenmar ES	Victory Villa ES	113
Hawthorne ES	Hawthorne ES	369
Hawthorne ES	Middlesex ES	19
Martin Boulevard ES	Hawthorne ES	34
Martin Boulevard ES	Martin Boulevard ES	206
Middlesex ES	Middlesex ES	278
Middlesex ES	Victory Villa ES	184
Middlesex ES	Vincent Farm ES	24
Orems ES	Middlesex ES	4
Orems ES	Orems ES	215
Shady Spring ES	Orems ES	59
Shady Spring ES	Shady Spring ES	489
Shady Spring ES	Victory Villa ES	70
Victory Villa ES	Martin Boulevard ES	1
Victory Villa ES	Middlesex ES	163
Victory Villa ES	Victory Villa ES	203
Vincent Farm ES	Martin Boulevard ES	49
Vincent Farm ES	Victory Villa ES	88
Vincent Farm ES	Vincent Farm ES	699

Key: Green represents K-5 "Live and Attend In" students who live in the boundary and are not impacted by the option. Pink represents the number of K-5 "Live and Attend In" students who live in the boundary and are impacted by the option.

2016-17: Feeder Patterns

The following table reflects the current elementary to middle school feeder patterns. The table shows the number (Live and Attend In) and percent of students that progress from each elementary to their corresponding zoned middle schools.

Based on Current 2016-17 Boundaries

2016-17 ES Boundary	2016-17 MS Boundary	Total K-5 Live and Attend In	ES Attendance
Glenmar ES	Middle River MS	427	100%
Hawthorne ES	Stemmers Run MS	388	100%
Martin Boulevard ES	Middle River MS	206	86%
Martin Boulevard ES	Stemmers Run MS	34	14%
Middlesex ES	Middle River MS	208	43%
Middlesex ES	Stemmers Run MS	278	57%
Orems ES	Stemmers Run MS	219	100%
Shady Spring ES	Golden Ring MS	618	100%
Victory Villa ES	Middle River MS	367	100%
Vincent Farm ES	Golden Ring MS	346	41%
Vincent Farm ES	Middle River MS	263	31%
Vincent Farm ES	Perry Hall MS	227	27%

Options A-F: Feeder Patterns

The following tables reflect the DRAFT options in terms of feeder patterns. The tables show which elementary schools will feed into the middle schools, along with how many K-5th “Live and Attend In” students for each feeder pattern.

ES Option A Boundary	2016-17 MS Boundary	Total K-5 Live and Attend In	ES Attendance
Glenmar ES	Middle River MS	342	100%
Hawthorne ES	Stemmers Run MS	422	100%
Martin Boulevard ES	Middle River MS	246	100%
Middlesex ES	Middle River MS	38	9%
Middlesex ES	Stemmers Run MS	408	91%
Orems ES	Golden Ring MS	93	51%
Orems ES	Stemmers Run MS	89	49%
Shady Spring ES	Golden Ring MS	471	100%
Victory Villa ES	Golden Ring MS	127	18%
Victory Villa ES	Middle River MS	560	82%
Vincent Farm ES	Golden Ring MS	273	35%
Vincent Farm ES	Middle River MS	285	36%
Vincent Farm ES	Perry Hall MS	227	29%

Options A-F: Feeder Patterns (Continued)

ES Option B Boundary	2016-17 MS Boundary	Total K-5 Live and Attend In	ES Attendance
Glenmar ES	Middle River MS	314	100%
Hawthorne ES	Stemmers Run MS	422	100%
Martin Boulevard ES	Middle River MS	254	100%
Middlesex ES	Middle River MS	38	9%
Middlesex ES	Stemmers Run MS	408	91%
Orems ES	Golden Ring MS	113	56%
Orems ES	Stemmers Run MS	89	44%
Shady Spring ES	Golden Ring MS	505	85%
Victory Villa ES	Golden Ring MS	73	11%
Victory Villa ES	Middle River MS	611	89%
Vincent Farm ES	Golden Ring MS	273	36%
Vincent Farm ES	Middle River MS	254	34%
Vincent Farm ES	Perry Hall MS	227	30%

ES Option C Boundary	2016-17 MS Boundary	Total K-5 Live and Attend In	ES Attendance
Glenmar ES	Middle River MS	314	100%
Hawthorne ES	Stemmers Run MS	403	100%
Martin Boulevard ES	Middle River MS	254	100%
Middlesex ES	Middle River MS	38	10%
Middlesex ES	Stemmers Run MS	361	90%
Orems ES	Golden Ring MS	129	45%
Orems ES	Stemmers Run MS	155	55%
Shady Spring ES	Golden Ring MS	489	100%
Victory Villa ES	Golden Ring MS	86	13%
Victory Villa ES	Middle River MS	587	87%
Vincent Farm ES	Golden Ring MS	260	34%
Vincent Farm ES	Middle River MS	278	36%
Vincent Farm ES	Perry Hall MS	227	30%

Options A-F: Feeder Patterns (Continued)

ES Option D1 Boundary	2016-17 MS Boundary	Total K-5 Live and Attend In	ES Attendance
Glenmar ES	Middle River MS	314	100%
Hawthorne ES	Stemmers Run MS	403	100%
Martin Boulevard ES	Middle River MS	256	100%
Middlesex ES	Middle River MS	78	18%
Middlesex ES	Stemmers Run MS	361	82%
Orems ES	Golden Ring MS	129	45%
Orems ES	Stemmers Run MS	155	55%
Shady Spring ES	Golden Ring MS	489	100%
Victory Villa ES	Golden Ring MS	86	13%
Victory Villa ES	Middle River MS	587	87%
Vincent Farm ES	Golden Ring MS	260	36%
Vincent Farm ES	Middle River MS	236	33%
Vincent Farm ES	Perry Hall MS	227	31%

ES Option E1 Boundary	2016-17 MS Boundary	Total K-5 Live and Attend In	ES Attendance
Glenmar ES	Middle River MS	314	100%
Hawthorne ES	Stemmers Run MS	403	100%
Martin Boulevard ES	Middle River MS	256	100%
Middlesex ES	Middle River MS	38	11%
Middlesex ES	Stemmers Run MS	301	89%
Orems ES	Golden Ring MS	25	10%
Orems ES	Stemmers Run MS	215	90%
Shady Spring ES	Golden Ring MS	547	100%
Victory Villa ES	Golden Ring MS	86	12%
Victory Villa ES	Middle River MS	627	88%
Vincent Farm ES	Golden Ring MS	306	40%
Vincent Farm ES	Middle River MS	236	31%
Vincent Farm ES	Perry Hall MS	227	30%

Options A-F: Feeder Patterns (Continued)

ES Option F Boundary	2016-17 MS Boundary	Total K-5 Live and Attend In	ES Attendance
Glenmar ES	Middle River MS	314	100%
Hawthorne ES	Stemmers Run MS	403	100%
Martin Boulevard ES	Middle River MS	256	100%
Middlesex ES	Middle River MS	163	35%
Middlesex ES	Stemmers Run MS	301	65%
Orems ES	Golden Ring MS	59	22%
Orems ES	Stemmers Run MS	215	78%
Shady Spring ES	Golden Ring MS	489	100%
Victory Villa ES	Golden Ring MS	156	24%
Victory Villa ES	Middle River MS	502	76%
Vincent Farm ES	Golden Ring MS	260	36%
Vincent Farm ES	Middle River MS	236	33%
Vincent Farm ES	Perry Hall MS	227	31%

Options A-F: Walk Zone Counts

The following tables reflect the DRAFT options in terms of students living within walk zones.

Total K-5 Live and Attend In Living Within Walk Zones	
Current Walk Zones	1,686
Option A	1,642
Option B	1,614
Option C	1,625
Option D1	1,585
Option E1	1,585
Option F	1,585
*Counts based on Official September 30, 2016 Enrollment. The Current Walk zone counts show the K-5 live and Attend In students that live within the existing walk zones. The Options are showing the K-5 Live and Attend In students that live within the potential walk zones based on 1 mile radius and safe walking conditions.	

Planned Unit Developments

The table below details the Planned Unit Developments within the study area that contain lots to be built with residential and were approved as of January 2017. The Display Number correlates to the labels on the Planned Unit Development plot map.

Map Display Number	Lots Left to Build	Development Name	Single Family Detached Approved	Single Family-Semi Detached Approved	Single Family Attached Approved	Multi-Family Approved	Developed Single Family Detached	Developed Single Family Semi-Detached	Developed Single Family Attached	Developed Multi-Family
1	59	5737 ALLENDER ROAD	173	0	0	0	114	0	0	0
2	1	BENICEWICZ PROPERTY	2	0	0	0	0	1	0	0
3	324	THE PRESERVE AT WINDLASS RUN PUD	107	0	317	0	27	0	73	0
4	997	GREENLEIGH AT CROSSROADS - RESIDENTIAL	289	0	708	0	0	0	0	0
5	356	FRANKLIN SQUARE MIXED USE DEVELOPMENT	0	0	0	356	0	0	0	0
6	20	WINDLASS WOODS	20	0	0	0	0	0	0	0
7	96	GREENFIELDS AT WHITE MARSH	96	0	0	0	0	0	0	0
8	311	COWENTON SOUTH - 4th REFINED PLAN	0	0	0	311	0	0	0	0
9	90	RAVENHURST	0	0	90	0	0	0	0	0
10	250	PARAGON AT NOTTINGHAM RIDGE PUD	0	0	0	250	0	0	0	0
Total	2,504		687	0	1,115	917	142	0	73	0