

Victory Villa Elementary Community Boundary Study

Committee Meeting 6
April 5, 2017

Presented by:

Baltimore County Public Schools and Cropper GIS Consulting



Tonight's Goals & Agenda

- 6:00 - 6:15 Review survey results and new options per committee and public feedback
- 6:15 - 6:35 Small group discussion of survey results and modified options
- 6:35 – 7:10 Perform 'option evaluation' exercise to evaluate DRAFT options that best meet study considerations and objectives
- 7:10 - 7:25 Discuss results of 'option evaluation' exercise
- 7:25 - 7:30 Discuss next steps and adjourn





Baltimore County Public Schools

2016-2017 Northeast Boundary Change Process

Victory Villa Elementary Community – Boundary Study Timeline

<http://www.bcps.org>



<p>NE Boundary Committee Meeting 1</p> <p>Wednesday, January 11, 2017 6 – 7:30 p.m. Middle River MS Cafeteria</p>	<p>NE Boundary Committee Meeting 2</p> <p>Wednesday, January 25, 2017 6 – 7:30 p.m. Middle River MS Cafeteria</p>	<p>NE Boundary Committee Meeting 3</p> <p>Wednesday, February 8, 2017 6 – 7:30 p.m. Middle River MS Cafeteria</p>	<p>NE Boundary Committee Meeting 4</p> <p>Wednesday, February 22, 2017 6 – 7:30 p.m. Middle River MS Cafeteria</p>	<p>NE Boundary Committee Meeting 5</p> <p>Wednesday, March 8, 2017 6 – 7:30 p.m. Middle River MS Cafeteria</p>	<p>Public Information Session</p> <p>Wednesday, March 15, 2017 7 – 8 p.m. Middle River MS Cafeteria</p>	<p>NE Boundary Committee Meeting 6</p> <p>Wednesday, April 5, 2017 6 – 7:30 p.m. Middle River MS Cafeteria</p>	<p>NE Boundary Committee Meeting 7</p> <p>Thursday, April 20, 2017 6-7:30 p.m. Middle River MS Cafeteria</p>	<p>Recommendation to Board Tuesday May 9, 2017 7 p.m. Greenwood Building E</p>
<ul style="list-style-type: none"> • Introduction of committee members • Introduction of process & timeline • Criteria for decision making • Background Report Overview <p>* SNOW DATE Thursday, January 12, 2017 6 - 7:30 p.m. Middle River MS Cafeteria</p>	<ul style="list-style-type: none"> • Recap Background Report and Q/A. • Review planning blocks and baseline options • Small group discussions & review of baseline scenarios <p>* SNOW DATE Thursday, January 26, 2017 6 - 7:30 p.m. Middle River MS Cafeteria</p>	<ul style="list-style-type: none"> • Provide updated information/data and Q/A on process to date • Develop and evaluate scenarios • Consensus building exercises around various scenarios (if necessary) <p>* SNOW DATE Thursday, February 9, 2017 6 - 7:30 p.m. Middle River MS Cafeteria</p>	<ul style="list-style-type: none"> • Develop & evaluate various scenarios • Consensus building exercises around various options (if necessary) <p>* SNOW DATE Thursday, February 23, 2017 6 - 7:30 p.m. Middle River MS Cafeteria</p>	<ul style="list-style-type: none"> • Review proposed options for Public Information Session • Select viable scenarios for Public Information Session • Discuss logistics for Public Information Session <p>* SNOW DATE Thursday, March 9, 2017 6 - 7:30 p.m. Middle River MS Cafeteria</p>	<ul style="list-style-type: none"> • Explanation of Process • Presentation of Data • Gallery Walk • Committee members facilitate discussion around maps • Kickoff online survey March 15, 2017 access available until midnight on March 27, 2017. <p>* SNOW DATE Tuesday, March 28, 2017 7 - 8 p.m. Middle River MS Cafeteria</p> <p>Kickoff online survey March 15, 2017 access available until midnight on April 2, 2017</p>	<p>Review Public Information Session feedback, and suggested changes to options per feedback, if any</p>	<ul style="list-style-type: none"> • Select Scenario to be recommended to the Board of Ed. 	<p>Board Hearing 10+ Days Prior to Decision</p> <p>Monday, May 15, 2017 6:30 p.m. Eastern Tech HS</p>
								<p>Board Decision Tuesday, June 13, 2017 7 p.m. Greenwood Building E</p>

We are here

Light dinner will be provided for committee members at committee meetings 1-7.
Agenda topics are preliminary and subject to change based on the work of the committee.

- Mtgs of Northeast Boundary Study Committee members; general public may attend to observe
- Special mtgs. open to the general public; attendance & participation encouraged
- BOE Regular Board of Education meetings; general public welcome to attend

Requests, Questions & Updates

Data corrections and updates since Public Information Session:

- Data table showing the number of walkers presented at the Public Information Session contained an error - the current walk zone data was incorrect
 - All other data for the number of walkers for each option was correct
 - Error appeared in the data table at the Public Information Session and in data table presented with online survey (data at meeting #5 was correct)

Total K-5 Live and Attend In Living Within Walk Zones	
Current Walk Zones	1,274
Option A	1,642
Option B	1,614
Option C	1,625
Option D	1,585

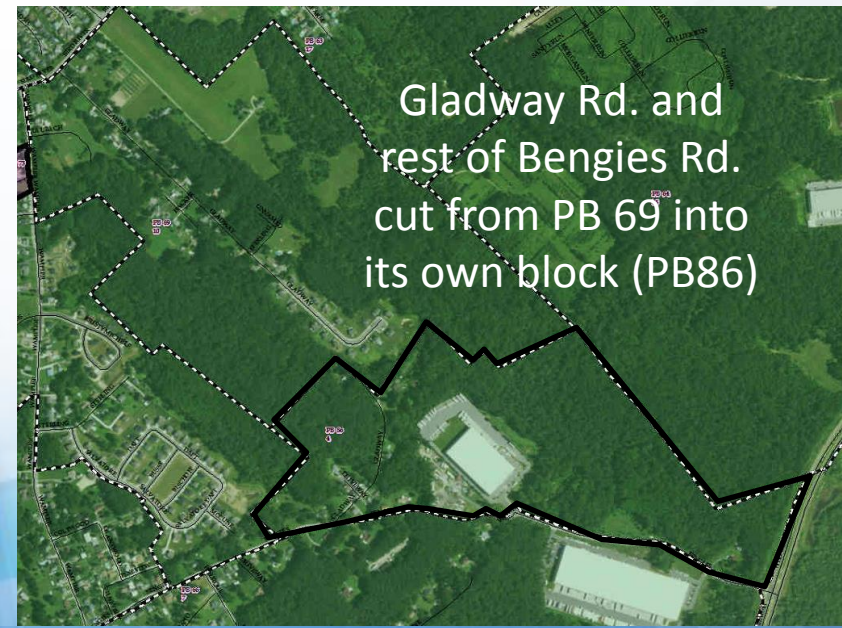
Total K-5 Live and Attend In Living Within Walk Zones	
Correct Version	
Current Walk Zones	1,686
Option A	1,642
Option B	1,614
Option C	1,625
Option D	1,585



Requests, Questions & Updates

Public feedback on Planning Block Split:

- Comments received from the public identified a transportation inefficiency in planning block 69
- Both parts of Gladway Rd. were included in PB69, but the southern part of Gladway Rd. does not fully connect, it only accesses to Bengies Rd.
- The PB was split so that homes on Gladway that can only access Bengies Rd. are separated
- The remainder of Bengies Rd. was included in the new PB
- Committee should consider this adjustment if options A-D are recommended



Requests & Questions-Follow-Up

From Meeting 5- Questions:

What procedures and guidelines exist for special permission transfer students? (See Policy and Rule 5140)

- Policy and Rule 5140 provide the guidelines for a special permission transfer for grades K-12; prekindergarten students are not eligible

First year of a boundary change:

- Students enrolled in Grades 3 and 4 (rising Grades 4 and 5) may request to remain in the school through their terminal grade
- If a student who meets the criteria outlined in 5140 has a sibling who is **currently enrolled** (K-5) in the affected school they have the option of remaining through terminal grade



Special Permission Transfers

Policy and Rule 5140

Siblings

- A sibling of a currently enrolled student (K-5) may request to attend the same school as the enrolled student, if the criteria outlined in 5140 are met
- Special permission transfers will be denied for siblings if the requested school is overcrowded
- Special permission transfers will be denied by principals when schools are overcrowded and in the first year of a boundary change for the following requests:
 - Childcare
 - Program of study
 - Child Employee



Special Permission Transfers

Policy and Rule 5140

- Once approved, special permission approval remains in effect through the students terminal grade, unless a student fails to meet the conditions of the *Student Contract* for any one of the following reasons:
 - Change in reason for which the transfer was granted
 - Attendance, tardiness, or behavior
 - Academic progress
- Refer to Policy and Rule 5140 for more information on special permission transfers



Public Information Session

Summary of Survey Results:

- Remember to utilize this feedback as an additional tool as you come to a recommendation
- Don't focus on this report solely as the basis for your decision, but remain focused on the overall project objectives and study considerations



Public Information Session

Summary of Survey Results:

- About 250 people attended the public information session, and 274 total unique respondents participated in the survey
- The public was asked about their overall opinion towards an Option, along with what concerns they had if they opposed any option



Public Information Session

Total Respondents:

- Option B and C were the most “in favor” at 29.1 % and 28.3% respectively; and the least “opposed” at 65% and 61.9% respectively
- Options A and D were the most “opposed” at 70.4% and 75.8% respectively; and the least “in favor” at 23.3% and 15.4% respectively

Table 2. Summary of Overall Opinion for Each Option

Overall Opinion	Option A		Option B		Option C		Option D	
	n	%	n	%	n	%	n	%
Strongly in favor	41	19.5%	44	23.7%	43	23.4%	18	9.9%
Somewhat in favor	8	3.8%	10	5.4%	9	4.9%	10	5.5%
Neutral	13	6.2%	11	5.9%	18	9.8%	16	8.8%
Somewhat opposed	7	3.3%	6	3.2%	12	6.5%	15	8.2%
Strongly opposed	141	67.1%	115	61.8%	102	55.4%	123	67.6%
Total	210	100.0%	186	100.0%	184	100.0%	182	100.0%



Public Information Session

- For all options the dominant primary concern was “Divides existing neighborhoods”

Table 4. Summary of Primary Concern for Each Option

Primary Concern	Option A		Option B		Option C		Option D	
	n	%	n	%	n	%	n	%
Does not support maintaining or increasing diversity	8	5.6%	5	4.1%	6	5.3%	7	5.1%
Divides existing neighborhoods	97	67.8%	89	73.6%	74	64.9%	86	63.2%
Is disruptive to current walkers, changes bus ridership for students	15	10.5%	10	8.3%	5	4.4%	8	5.9%
Does not address current overcrowding	11	7.7%	9	7.4%	19	16.7%	19	14.0%
Is disruptive to school feeder patterns	6	4.2%	3	2.5%	6	5.3%	8	5.9%
Does not address long term enrollment needs	6	4.2%	5	4.1%	4	3.5%	8	5.9%
Total	143	100.0%	121	100.0%	114	100.0%	136	100.0%



Public Information Session

- Of those who were in favor of a particular option, “Maintains existing neighborhoods” was the most common response

Table 3. Summary of Reasons for Favoring an Option

Reason for Favoring an Option	Option A		Option B		Option C		Option D	
	n	%	n	%	n	%	n	%
Maintains or increases diversity	4	8.7%	6	11.5%	5	9.8%	2	7.1%
Maintains existing neighborhoods	27	58.7%	28	53.8%	34	66.7%	11	39.3%
Does not disrupt current walkers, changes bus ridership for students	2	4.3%	3	5.8%	4	7.8%	2	7.1%
Addresses current overcrowding	9	19.6%	6	11.5%	6	11.8%	7	25.0%
Maintains school feeder patterns	1	2.2%	5	9.6%	1	2.0%	0	0.0%
Addresses long term enrollment needs	3	6.5%	4	7.7%	1	2.0%	6	21.4%
Total	46	100.0%	52	100.0%	51	100.0%	28	100.0%



Additional DRAFT Options

Options E and F have been drafted

Feedback from Public Information Session and Survey:

- New options incorporate feedback and attempt to adhere to the overall objectives and study guidelines
- New options address concerns that Orems community is being split
- Additional adjustments have been made to balance utilization
- Options E and F also incorporate the suggested planning block split that was mentioned previously



Small Group Discussion

Committee Review and Discuss all Options:

- Break into 6 small groups, group according to color on name tag
- Review new options and survey results
 - Options A-D have not been modified since the Public Information Session
 - Data for new Options E and F have been provided in meeting materials
- Record observations and any questions that arise
- Reconvene in 15 mins to share with group



Option Evaluation

- Groups will evaluate how well each option addresses the boundary study objectives and considerations
- For each option, groups will provide a score indicating how well each of the boundary study considerations are met
 - Very Well = 3 Points
 - Well = 2 Points
 - Somewhat = 1 Point
 - Not at All = 0
- Exercise will take about 20-25 minutes, followed by discussion



Option Evaluation

Boundary Study Considerations	Options					
	A	B	C	D	E	F
Efficient use of capacity in affected schools						
Maintaining the continuity of neighborhoods						
Maintaining or increasing the diversity among schools to reflect the diversity of the region						
The impact of transportation and pedestrian patterns on students						
Elimination of existing satellite boundaries						
Long-term enrollment and capacity trends and future capital plans						
Location of feeder school boundaries and continuity of feeder patterns						

Directions: Use the scoring criteria below to rate how well each option addresses the objectives and considerations of the boundary study.

Very Well = 3 Points Well = 2 Points Somewhat = 1 Point Not at All = 0

Next Meeting

- Thursday, **April 20, 2017**
- Same location, **Middle River Middle School**
- Same starting time, **6 – 7:30 p.m.**
- See you at the next meeting!



Next Steps

- Recommendation to the Board
 - Tuesday, May 9, 2017 @ 7pm
 - Greenwood Building E
- Board Hearing
 - Monday, May 15, 2017@ 6:30pm
 - Eastern Tech High School
- Board Decision
 - Tuesday, June 13, 2017@ 7pm
 - Greenwood Building E
- *Committee attendance is not mandatory, although you are welcome to attend!*



Thank you for your hard work and dedication to
this boundary study process!

