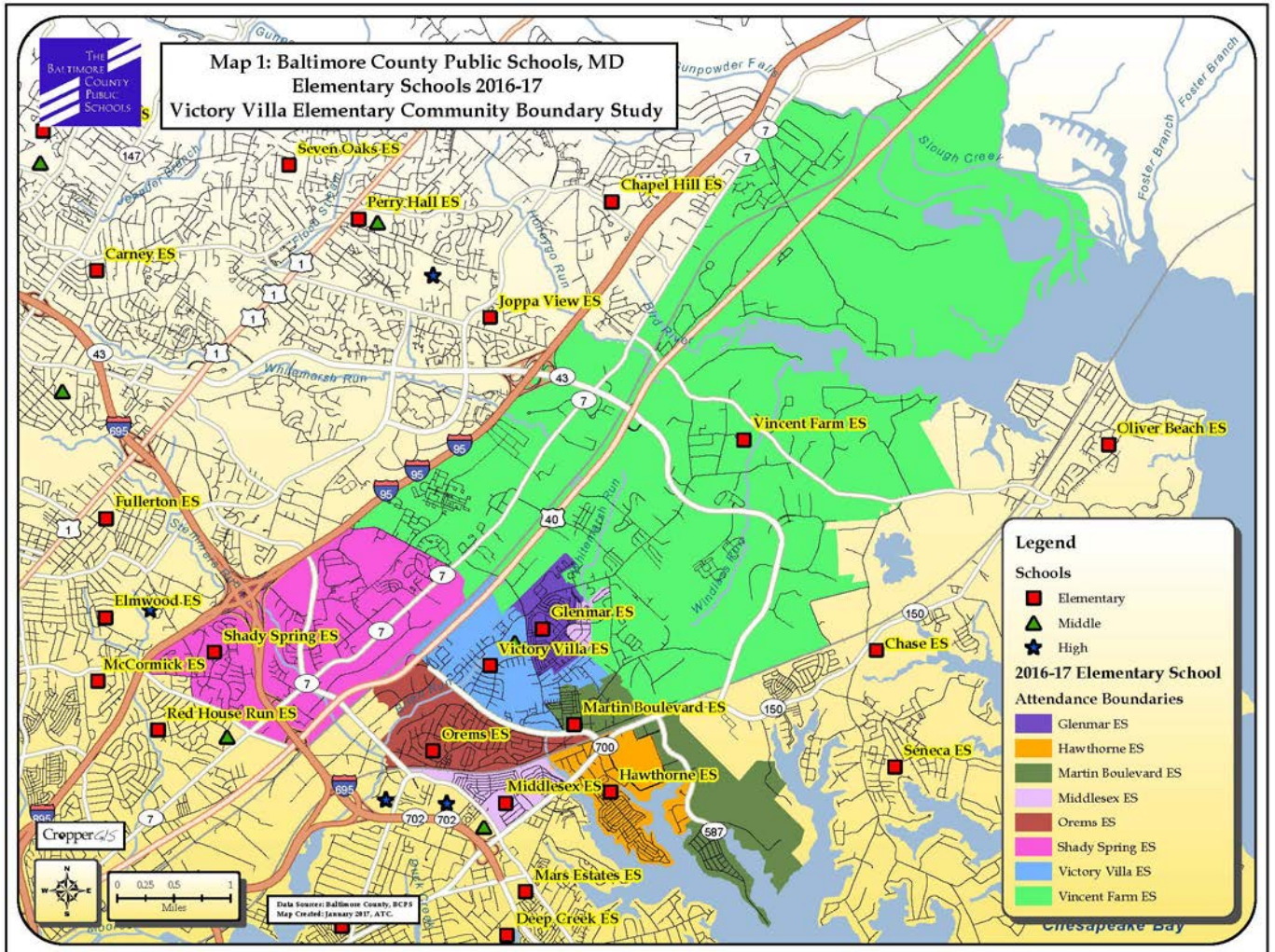


# Baltimore County Public Schools Victory Villa Elementary Community Boundary Change Study

## DRAFT Boundary Options 1-6 and Statistics



**2016-17 Capacity, 2016-17 Official Enrollment, Live Attend Counts, and Building Utilizations**

The following are school capacity statistics for review. These statistics will be utilized to compare and assess school boundary options.

The table on this page details the State Rated Capacity (number of students each building can hold) for each building, as well as enrollment and live attend counts.

The enrollment column shows the number of study area students enrolled in each building as of September 30, 2016. The State of Maryland defines the State Rated Capacity as “the number of students that the IAC or its designee determines that an individual school has the physical capacity to enroll.”

The K-5 “Live and Attend In” column reflects the number of K-5 grade students (BCPS) that live and attend within each of the 2016-17 Victory Villa Elementary Community attendance boundaries. The “Live Out and Attend In” column shows those K-5<sup>th</sup> graders that live outside of their school’s 2016-17 attendance boundary but attend that school.

Utilization is a term that defines how much of a school building is being used. Utilization is the enrollment divided by the state rated capacity (SRC), described as a percentage. Looking at the enrollment utilizations, it is evident that there is a need to add capacity to the area to bring schools at or below 100% utilization.

The “2016-17 PS/PK-5 Grade Enrollment Over/Under Capacity” column shows the number of FTE PS/PK-5 students over the state rated capacity for each building. Full Time Equivalent (FTE) enrollment counts 100% of students in Grades kindergarten through 5, but only 50% of students in prekindergarten and preschool because they are half-day programs and two sessions can use one classroom (one in the AM and the other in the PM). Hawthorne ES has all day PK but half day PS and the counts reflect this. The table shows that most schools within the study area are over capacity, with Shady Spring ES being the most over capacity.

The total utilization at the bottom of the page shows 113%, which does not include the newly reconstructed and enlarged school at Victory Villa Elementary. If this was included in this table, the total utilization of the study area would be 101%.

ES name	2016 State Rated Capacity (SRC)	Future Capacity	2016-17 (Sept 30th) FTE PS/PK-5 Grade Enrollment <sup>1</sup>	2016-17 (Sept 30th) FTE PS/PK-5 Grade Enrollment Utilization	K-5 Live and Attend In	K-5 Live Out Attend In	2016-17 FTE PS/PK-5 Grade Enrollment Over/Under Capacity	2016-17 (Sept 30th) Total Headcount PS/PK Enrollment	2016-17 (Sept 30th) FTE PS/PK Enrollment <sup>1</sup>
Glenmar ES	371	371	459	124%	427	13	88	38	19
Hawthorne ES	587	587	508	87%	388	17	-79	110	103
Martin Boulevard ES	291	291	292	100%	240	35	1	34	17
Middlesex ES	517	517	520	101%	486	8	3	50	26
Orems ES	313	313	333	106%	219	90	20	47	24
Shady Spring ES	499	499	657	132%	618	17	158	43	22
Victory Villa ES	326	735	411	126%	367	28	85	31	16
Vincent Farm ES	699	699	884	126%	836	29	185	38	19
<b>Total</b>	<b>3,603</b>	<b>4,012</b>	<b>4,064</b>	<b>113%</b>	<b>3,581</b>	<b>237</b>	<b>461</b>	<b>391</b>	<b>246</b>

Counts based on Official September 30, 2016 Enrollment

<sup>1</sup> Full Time Equivalent (FTE) enrollment factors 100% of students in Grades kindergarten through 5, and 50% of students in prekindergarten and preschool because they are half-day programs and two sessions can use one classroom, one in the AM and the other in the PM. Hawthorne ES has all day PK but half day PS and the counts reflect this.

**DRAFT Options 1-6**

The following tables present DRAFT options for the committee’s review. Keep in mind that these options are only starting points for discussion. Any of the following options can be changed based on feedback from the committee, public, and BCPS administration.

**Options 1-6 Enrollment Estimates**

The following tables reflect the DRAFT options enrollment estimates. The estimated enrollment is calculated by adding the 2016-17 FTE PS/PK students to their 2016-17 school, plus the K-5th students that “Live Out and Attend In” a 2016-17 school, plus the total number of live in K-5th grade students within each new DRAFT option zone that “Live and Attend In” during the 2016-17 school year. The estimated enrollment for Hawthorne ES includes the total headcount of PK students and the FTE PS students due to the all day PK pilot program at Hawthorne ES.

ES name	2016 State Rated Capacity (SRC)	Future Capacity	2016-17 (Sept 30th) FTE PS/PK-5 Grade Enrollment <sup>1</sup>	Option 1 Estimated Enrollment <sup>2</sup>	Option 2 Estimated Enrollment <sup>2</sup>	Option 3 Estimated Enrollment <sup>2</sup>	Option 4 Estimated Enrollment <sup>2</sup>
Glenmar ES	371	371	459	390	390	374	346
Hawthorne ES	587	587	508	582	582	542	592
Martin Boulevard ES	291	291	292	298	298	298	299
Middlesex ES	517	517	520	433	499	480	499
Orems ES	313	313	333	303	307	296	300
Shady Spring ES	499	499	657	510	510	510	517
Victory Villa ES	326	735	411	726	728	731	738
Vincent Farm ES	699	699	884	822	750	833	773
<b>Total</b>	<b>3,603</b>	<b>4,012</b>	<b>4,064</b>	<b>4,064</b>	<b>4,064</b>	<b>4,064</b>	<b>4,064</b>

ES name	2016 State Rated Capacity (SRC)	Future Capacity	2016-17 (Sept 30th) FTE PS/PK-5 Grade Enrollment <sup>1</sup>	Option 5 Estimated Enrollment <sup>2</sup>	Option 6 Estimated Enrollment <sup>2</sup>
Glenmar ES	371	371	459	346	346
Hawthorne ES	587	587	508	542	606
Martin Boulevard ES	291	291	292	306	321
Middlesex ES	517	517	520	480	496
Orems ES	313	313	333	316	328
Shady Spring ES	499	499	657	544	510
Victory Villa ES	326	735	411	728	672
Vincent Farm ES	699	699	884	802	785
<b>Total</b>	<b>3,603</b>	<b>4,012</b>	<b>4,064</b>	<b>4,064</b>	<b>4,064</b>

Counts based on Official September 30, 2016 Enrollment

<sup>1</sup> Full Time Equivalent (FTE) enrollment factors 100% of students in Grades kindergarten through 5, and 50% of students in prekindergarten and preschool because they are half-day programs and two sessions can use one classroom, one in the AM and the other in the PM. Hawthorne ES has all day PK but half day PS and the counts reflect this.

<sup>2</sup> The estimated enrollment is calculated by adding the 2016-17 FTE PS/PK students to their 2016-17 school, plus the K-5th students that “Live Out and Attend In” a 2016-17 school, plus the total number of live in K-5th grade students within each new DRAFT option zone that “Live and Attend In” during the 2016-17 school year. The estimated enrollment for Hawthorne ES includes the total headcount of PK students and the FTE PS students due to the all day PK pilot program at Hawthorne ES.



**Options 1-6: Utilization Estimates**

The following tables reflect the DRAFT options building utilization and over/under estimates. The utilizations are based on PS/PK-5 grade estimated enrollment counts versus the proposed future capacity. The over/under counts reflect how many available seats each school has for that option. Negative numbers reflect available seats, and positive numbers are the total over capacity.

ES name	2016 State Rated Capacity (SRC)	Future Capacity	2016-17 (Sept 30th) FTE PS/PK-5 Enrollment		Option 1 Estimated Utilization		Option 2 Estimated Utilization		Option 3 Estimated Utilization		Option 4 Estimated Utilization	
			FTE	%	FTE	%	FTE	%	FTE	%	FTE	%
Glenmar ES	371	371	88	124%	19	105%	19	105%	3	101%	-25	93%
Hawthorne ES	587	587	-79	87%	-5	99%	-5	99%	-45	92%	5	101%
Martin Boulevard ES	291	291	1	100%	7	102%	7	102%	7	102%	8	103%
Middlesex ES	517	517	3	101%	-84	84%	-18	97%	-37	93%	-18	97%
Orems ES	313	313	20	106%	-10	97%	-6	98%	-17	95%	-13	96%
Shady Spring ES	499	499	158	132%	11	102%	11	102%	11	102%	18	104%
Victory Villa ES	326	735	85	126%	-9	99%	-7	99%	-4	99%	3	100%
Vincent Farm ES	699	699	185	126%	123	118%	51	107%	134	119%	74	111%
<b>Total</b>	<b>3,603</b>	<b>4,012</b>	<b>461</b>	<b>113%</b>	<b>52</b>	<b>101%</b>	<b>52</b>	<b>101%</b>	<b>52</b>	<b>101%</b>	<b>52</b>	<b>101%</b>

ES name	2016 State Rated Capacity (SRC)	Future Capacity	2016-17 (Sept 30th) FTE PS/PK-5 Enrollment		Option 5 Estimated Utilization		Option 6 Estimated Utilization	
			FTE	%	FTE	%	FTE	%
Glenmar ES	371	371	88	124%	-25	93%	-25	93%
Hawthorne ES	587	587	-79	87%	-45	92%	19	103%
Martin Boulevard ES	291	291	1	100%	15	105%	30	110%
Middlesex ES	517	517	3	101%	-37	93%	-21	96%
Orems ES	313	313	20	106%	3	101%	15	105%
Shady Spring ES	499	499	158	132%	45	109%	11	102%
Victory Villa ES	326	735	85	126%	-7	99%	-63	91%
Vincent Farm ES	699	699	185	126%	103	115%	86	112%
<b>Total</b>	<b>3,603</b>	<b>4,012</b>	<b>461</b>	<b>113%</b>	<b>52</b>	<b>101%</b>	<b>52</b>	<b>101%</b>

Counts based on Official September 30, 2016 Enrollment

<sup>1</sup> Full Time Equivalent (FTE) enrollment factors 100% of students in Grades kindergarten through 5, and 50% of students in prekindergarten and preschool because they are half-day programs and two sessions can use one classroom, one in the AM and the other in the PM. Hawthorne ES has all day PK but half day PS and the counts reflect this.

<sup>2</sup> The estimated enrollment is calculated by adding the 2016-17 FTE PS/PK students to their 2016-17 school, plus the K-5th students that “Live Out and Attend In” a 2016-17 school, plus the total number of live in K-5th grade students within each new DRAFT option zone that “Live and Attend In” during the 2016-17 school year. The estimated enrollment for Hawthorne ES includes the total headcount of PK students and the FTE PS students due to the all day PK pilot program at Hawthorne ES.

**Options 1-6: Demographics**

The following tables reflect the DRAFT options minority percentages for the total headcount for 2016-17 and Options.

ES name	Percent Minority				
	2016-17 Total PS/PK-5th	Option 1 <sup>3</sup>	Option 2 <sup>3</sup>	Option 3 <sup>3</sup>	Option 4 <sup>3</sup>
Glenmar ES	91%	91%	91%	90%	90%
Hawthorne ES	68%	64%	64%	65%	65%
Martin Boulevard ES	61%	67%	67%	67%	67%
Middlesex ES	64%	47%	44%	44%	44%
Orems ES	28%	34%	48%	47%	47%
Shady Spring ES	90%	92%	92%	92%	92%
Victory Villa ES	63%	75%	73%	73%	74%
Vincent Farm ES	49%	50%	48%	49%	48%
<b>Total</b>	<b>65%</b>	<b>65%</b>	<b>65%</b>	<b>65%</b>	<b>65%</b>

ES name	Percent Minority		
	2016-17 Total PS/PK-5th	Option 5 <sup>3</sup>	Option 6 <sup>3</sup>
Glenmar ES	91%	90%	90%
Hawthorne ES	68%	65%	65%
Martin Boulevard ES	61%	67%	67%
Middlesex ES	64%	44%	50%
Orems ES	28%	47%	37%
Shady Spring ES	90%	92%	92%
Victory Villa ES	63%	74%	75%
Vincent Farm ES	49%	48%	50%
<b>Total</b>	<b>65%</b>	<b>65%</b>	<b>65%</b>

Counts based on Official September 30, 2016 Enrollment

<sup>3</sup> The Free Reduced Lunch and Minority counts are based on the total headcount and not the FTE.

**Options 1-6: Demographics (Continued)**

The following tables reflect the DRAFT options free-reduced lunch percentages for the total headcount for 2016-17 and Options.

ES name	Free-Reduced Lunch Percentages						
	2016-17 Total PS/PK-5th	Option 1 <sup>3</sup>	Option 2 <sup>3</sup>	Option 3 <sup>3</sup>	Option 4 <sup>3</sup>	Option 5 <sup>3</sup>	Option 6 <sup>3</sup>
Glenmar ES	67%	70%	70%	75%	61%	61%	61%
Hawthorne ES	60%	57%	57%	60%	57%	60%	57%
Martin Boulevard ES	78%	80%	80%	80%	80%	80%	75%
Middlesex ES	73%	69%	68%	68%	68%	68%	71%
Orems ES	51%	47%	48%	47%	52%	51%	48%
Shady Spring ES	75%	78%	78%	78%	75%	76%	78%
Victory Villa ES	64%	66%	66%	64%	70%	70%	70%
Vincent Farm ES	32%	32%	30%	30%	31%	29%	33%
<b>Total</b>	<b>60%</b>	<b>60%</b>	<b>60%</b>	<b>60%</b>	<b>60%</b>	<b>60%</b>	<b>60%</b>

Counts based on Official September 30, 2016 Enrollment

<sup>3</sup> The Free Reduced Lunch and Minority counts are based on the total headcount and not the FTE.

**Options 1-6: Student Impacts**

The following tables reflect the DRAFT options in terms of student impacts. The first table shows the total number of students impacted (moved) in each option. The following tables show the number of students who move or do not for each school in each scenario.

Student Impact Estimates	
Option	Total K-5 Live and Attend In Students Impacted
Option 1	681
Option 2	819
Option 3	834
Option 4	834
Option 5	759
Option 6	871
*Counts based on Preliminary September 30, 2016 Enrollment.	

2016-17 ES Boundary	ES Option 1 Boundary	Total K-5 Live and Attend In Students
Glenmar ES	Glenmar ES	358
Glenmar ES	Victory Villa ES	69
Hawthorne ES	Hawthorne ES	369
Hawthorne ES	Middlesex ES	19
Martin Boulevard ES	Hawthorne ES	34
Martin Boulevard ES	Martin Boulevard ES	206
Middlesex ES	Middlesex ES	278
Middlesex ES	Victory Villa ES	208
Orems ES	Middlesex ES	64
Orems ES	Orems ES	155
Shady Spring ES	Orems ES	34
Shady Spring ES	Shady Spring ES	471
Shady Spring ES	Victory Villa ES	113
Victory Villa ES	Martin Boulevard ES	40
Victory Villa ES	Middlesex ES	38
Victory Villa ES	Victory Villa ES	289
Vincent Farm ES	Hawthorne ES	59
Vincent Farm ES	Victory Villa ES	3
Vincent Farm ES	Vincent Farm ES	774

2016-17 ES Boundary	ES Option 2 Boundary	Total K-5 Live and Attend In Students
Glenmar ES	Glenmar ES	358
Glenmar ES	Victory Villa ES	69
Hawthorne ES	Hawthorne ES	369
Hawthorne ES	Middlesex ES	19
Martin Boulevard ES	Hawthorne ES	34
Martin Boulevard ES	Martin Boulevard ES	206
Middlesex ES	Middlesex ES	278
Middlesex ES	Victory Villa ES	208
Orems ES	Middlesex ES	130
Orems ES	Orems ES	89
Shady Spring ES	Orems ES	104
Shady Spring ES	Shady Spring ES	471
Shady Spring ES	Victory Villa ES	43
Victory Villa ES	Martin Boulevard ES	40
Victory Villa ES	Middlesex ES	38
Victory Villa ES	Victory Villa ES	289
Vincent Farm ES	Hawthorne ES	59
Vincent Farm ES	Victory Villa ES	75
Vincent Farm ES	Vincent Farm ES	702

Key: Green represents K-5 “Live and Attend In” students who live in the boundary and are not impacted by the option. Pink represents the number of K-5 “Live and Attend In” students who live in the boundary and are impacted by the option.

Options 1-6: Continued

2016-17 ES Boundary	ES Option 3 Boundary	Total K-5 Live and Attend In Students
Glenmar ES	Glenmar ES	265
Glenmar ES	Victory Villa ES	162
Hawthorne ES	Hawthorne ES	388
Martin Boulevard ES	Hawthorne ES	34
Martin Boulevard ES	Martin Boulevard ES	206
Middlesex ES	Glenmar ES	77
Middlesex ES	Middlesex ES	278
Middlesex ES	Victory Villa ES	107
Middlesex ES	Vincent Farm ES	24
Orems ES	Middlesex ES	130
Orems ES	Orems ES	89
Shady Spring ES	Orems ES	93
Shady Spring ES	Shady Spring ES	471
Shady Spring ES	Victory Villa ES	54
Victory Villa ES	Martin Boulevard ES	40
Victory Villa ES	Middlesex ES	38
Victory Villa ES	Victory Villa ES	289
Vincent Farm ES	Victory Villa ES	75
Vincent Farm ES	Vincent Farm ES	761

2016-17 ES Boundary	ES Option 4 Boundary	Total K-5 Live and Attend In Students
Glenmar ES	Glenmar ES	314
Glenmar ES	Victory Villa ES	113
Hawthorne ES	Hawthorne ES	369
Hawthorne ES	Middlesex ES	19
Martin Boulevard ES	Hawthorne ES	34
Martin Boulevard ES	Martin Boulevard ES	206
Middlesex ES	Hawthorne ES	24
Middlesex ES	Middlesex ES	278
Middlesex ES	Victory Villa ES	184
Orems ES	Middlesex ES	130
Orems ES	Orems ES	89
Shady Spring ES	Orems ES	97
Shady Spring ES	Shady Spring ES	478
Shady Spring ES	Victory Villa ES	43
Victory Villa ES	Martin Boulevard ES	41
Victory Villa ES	Middlesex ES	38
Victory Villa ES	Victory Villa ES	288
Vincent Farm ES	Hawthorne ES	45
Vincent Farm ES	Victory Villa ES	66
Vincent Farm ES	Vincent Farm ES	725

Key: Green represents K-5 “Live and Attend In” students who live in the boundary and are not impacted by the option. Pink represents the number of K-5 “Live and Attend In” students who live in the boundary and are impacted by the option.



Options 1-6: Continued

2016-17 ES Boundary	ES Option 5 Boundary	Total K-5 Live and Attend In Students
Glenmar ES	Glenmar ES	314
Glenmar ES	Victory Villa ES	113
Hawthorne ES	Hawthorne ES	388
Martin Boulevard	Hawthorne ES	34
Martin Boulevard	Martin Boulevard ES	206
Middlesex ES	Middlesex ES	278
Middlesex ES	Victory Villa ES	208
Orems ES	Middlesex ES	130
Orems ES	Orems ES	89
Shady Spring ES	Orems ES	113
Shady Spring ES	Shady Spring ES	505
Victory Villa ES	Martin Boulevard ES	41
Victory Villa ES	Middlesex ES	38
Victory Villa ES	Victory Villa ES	288
Vincent Farm ES	Martin Boulevard ES	7
Vincent Farm ES	Victory Villa ES	75
Vincent Farm ES	Vincent Farm ES	754

2016-17 ES Boundary	ES Option 6 Boundary	Total K-5 Live and Attend In Students
Glenmar ES	Glenmar ES	314
Glenmar ES	Victory Villa ES	113
Hawthorne ES	Hawthorne ES	369
Hawthorne ES	Middlesex ES	19
Martin Boulevard ES	Hawthorne ES	34
Martin Boulevard ES	Martin Boulevard ES	183
Martin Boulevard ES	Middlesex ES	23
Middlesex ES	Hawthorne ES	24
Middlesex ES	Middlesex ES	278
Middlesex ES	Victory Villa ES	184
Orems ES	Middlesex ES	64
Orems ES	Orems ES	155
Shady Spring ES	Orems ES	59
Shady Spring ES	Shady Spring ES	471
Shady Spring ES	Victory Villa ES	88
Victory Villa ES	Martin Boulevard ES	86
Victory Villa ES	Middlesex ES	78
Victory Villa ES	Victory Villa ES	203
Vincent Farm ES	Hawthorne ES	59
Vincent Farm ES	Victory Villa ES	40
Vincent Farm ES	Vincent Farm ES	737

Key: Green represents K-5 “Live and Attend In” students who live in the boundary and are not impacted by the option. Pink represents the number of K-5 “Live and Attend In” students who live in the boundary and are impacted by the option.

**2016-17: Feeder Patterns**

The following table reflects the current elementary to middle school feeder patterns. The table shows the number (Live and Attend In) and percent of students that progress from each elementary to their corresponding zoned middle schools.

Based on Current 2016-17 Boundaries

2016-17 ES Boundary	2016-17 MS Boundary	Total K-5 Live and Attend In	ES Attendance
Glenmar ES	Middle River MS	427	100%
Hawthorne ES	Stemmers Run MS	388	100%
Martin Boulevard ES	Middle River MS	206	86%
Martin Boulevard ES	Stemmers Run MS	34	14%
Middlesex ES	Middle River MS	208	43%
Middlesex ES	Stemmers Run MS	278	57%
Orems ES	Stemmers Run MS	219	100%
Shady Spring ES	Golden Ring MS	618	100%
Victory Villa ES	Middle River MS	367	100%
Vincent Farm ES	Golden Ring MS	346	41%
Vincent Farm ES	Middle River MS	263	31%
Vincent Farm ES	Perry Hall MS	227	27%

**Options 1-6: Feeder Patterns**

The following tables reflect the DRAFT options in terms of feeder patterns. The tables show which elementary schools will feed into the middle schools, along with how many K-5<sup>th</sup> “Live and Attend In” students for each feeder pattern.

ES Option 1 Boundary	2016-17 MS Boundary	Total K-5 Live and Attend In	ES Attendance
Glenmar ES	Middle River MS	358	100%
Hawthorne ES	Middle River MS	59	13%
Hawthorne ES	Stemmers Run MS	403	87%
Martin Boulevard ES	Middle River MS	246	100%
Middlesex ES	Middle River MS	38	10%
Middlesex ES	Stemmers Run MS	361	90%
Orems ES	Golden Ring MS	34	18%
Orems ES	Stemmers Run MS	155	82%
Shady Spring ES	Golden Ring MS	471	100%
Victory Villa ES	Golden Ring MS	114	17%
Victory Villa ES	Middle River MS	568	83%
Vincent Farm ES	Golden Ring MS	345	45%
Vincent Farm ES	Middle River MS	202	26%
Vincent Farm ES	Perry Hall MS	227	29%

Options 1-6: Feeder Patterns (Continued)

ES Option 2 Boundary	2016-17 MS Boundary	Total K-5 Live and Attend In	ES Attendance
Glenmar ES	Middle River MS	358	100%
Hawthorne ES	Middle River MS	59	13%
Hawthorne ES	Stemmers Run MS	403	87%
Martin Boulevard ES	Middle River MS	246	100%
Middlesex ES	Middle River MS	38	8%
Middlesex ES	Stemmers Run MS	427	92%
Orems ES	Golden Ring MS	104	54%
Orems ES	Stemmers Run MS	89	46%
Shady Spring ES	Golden Ring MS	471	100%
Victory Villa ES	Golden Ring MS	116	17%
Victory Villa ES	Middle River MS	568	83%
Vincent Farm ES	Golden Ring MS	273	39%
Vincent Farm ES	Middle River MS	202	29%
Vincent Farm ES	Perry Hall MS	227	32%

ES Option 3 Boundary	2016-17 MS Boundary	Total K-5 Live and Attend In	ES Attendance
Glenmar ES	Middle River MS	342	100%
Hawthorne ES	Stemmers Run MS	422	100%
Martin Boulevard ES	Middle River MS	246	100%
Middlesex ES	Middle River MS	38	9%
Middlesex ES	Stemmers Run MS	408	91%
Orems ES	Golden Ring MS	93	51%
Orems ES	Stemmers Run MS	89	49%
Shady Spring ES	Golden Ring MS	471	100%
Victory Villa ES	Golden Ring MS	127	18%
Victory Villa ES	Middle River MS	560	82%
Vincent Farm ES	Golden Ring MS	273	35%
Vincent Farm ES	Middle River MS	285	36%
Vincent Farm ES	Perry Hall MS	227	29%

Options 1-6: Feeder Patterns (Continued)

ES Option 4 Boundary	2016-17 MS Boundary	Total K-5 Live and Attend In	ES Attendance
Glenmar ES	Middle River MS	314	100%
Hawthorne ES	Middle River MS	69	15%
Hawthorne ES	Stemmers Run MS	403	85%
Martin Boulevard ES	Middle River MS	247	100%
Middlesex ES	Middle River MS	38	8%
Middlesex ES	Stemmers Run MS	427	92%
Orems ES	Golden Ring MS	97	52%
Orems ES	Stemmers Run MS	89	48%
Shady Spring ES	Golden Ring MS	478	100%
Victory Villa ES	Golden Ring MS	109	16%
Victory Villa ES	Middle River MS	585	84%
Vincent Farm ES	Golden Ring MS	280	39%
Vincent Farm ES	Middle River MS	218	30%
Vincent Farm ES	Perry Hall MS	227	31%

ES Option 5 Boundary	2016-17 MS Boundary	Total K-5 Live and Attend In	ES Attendance
Glenmar ES	Middle River MS	314	100%
Hawthorne ES	Stemmers Run MS	422	100%
Martin Boulevard ES	Middle River MS	254	100%
Middlesex ES	Middle River MS	38	9%
Middlesex ES	Stemmers Run MS	408	91%
Orems ES	Golden Ring MS	113	56%
Orems ES	Stemmers Run MS	89	44%
Shady Spring ES	Golden Ring MS	505	85%
Victory Villa ES	Golden Ring MS	73	11%
Victory Villa ES	Middle River MS	611	89%
Vincent Farm ES	Golden Ring MS	273	36%
Vincent Farm ES	Middle River MS	254	34%
Vincent Farm ES	Perry Hall MS	227	30%

Options 1-6: Feeder Patterns (Continued)

ES Option 6 Boundary	2016-17 MS Boundary	Total K-5 Live and Attend In	ES Attendance
Glenmar ES	Middle River MS	314	100%
Hawthorne ES	Middle River MS	83	17%
Hawthorne ES	Stemmers Run MS	403	83%
Martin Boulevard ES	Middle River MS	269	100%
Middlesex ES	Middle River MS	101	22%
Middlesex ES	Stemmers Run MS	361	78%
Orems ES	Golden Ring MS	59	28%
Orems ES	Stemmers Run MS	155	72%
Shady Spring ES	Golden Ring MS	471	100%
Victory Villa ES	Golden Ring MS	88	14%
Victory Villa ES	Middle River MS	540	86%
Vincent Farm ES	Golden Ring MS	346	47%
Vincent Farm ES	Middle River MS	164	22%
Vincent Farm ES	Perry Hall MS	227	31%

Options 1-6: Walk Zone Counts

The following tables reflect the DRAFT options in terms of students living within walk zones.

Total K-5 Live and Attend In Living Within Walk Zones	
Current Walk Zones	1,686
Option 1	1,573
Option 2	1,669
Option 3	1,642
Option 4	1,625
Option 5	1,614
Option 6	1,647
*Counts based on Official September 30, 2016 Enrollment. The Current Walk zone counts show the K-5 live and Attend In students that live within the existing walk zones. The Options are showing the K-5 Live and Attend In students that live within the potential walk zones based on 1 mile radius and safe walking conditions.	



**Planned Unit Developments**

The table below details the Planned Unit Developments within the study area that contain lots to be built with residential and were approved as of January 2017.

	Development Name	Lots Left to Build	Single Family Detached Approved	Single Family Semi-Detached Approved	Single Family Attached Approved	Multi-Family Approved	Developed Single Family Detached	Developed Single Family Semi-Detached	Developed Single Family Attached	Developed Multi-Family
1	1745 HILLTOP AVENUE	1	2	0	0	0	1	0	0	0
2	5737 ALLENDER ROAD	59	173	0	0	0	114	0	0	0
3	BENICEWICZ PROPERTY	1	2	0	0	0	1	0	0	0
4	CILLIANS CROSSING	13	0	0	25	0	0	0	12	0
5	COOK/NOYLE PROPERTY	2	3	0	0	0	1	0	0	0
6	COWENTON NORTH	48	48	0	0	0	0	0	0	0
6	COWENTON SOUTH - 4th REFINED PLAN	311	0	0	0	311	0	0	0	0
7	CRAIG PATRICK S PROPERTY	26	0	0	26	0	0	0	0	0
8	DEVONPORT COMMUNITY	17	0	0	47	4	0	0	34	0
9	EWERS PROPERTY	1	3	0	0	0	2	0	0	0
10	FRANKLIN SQUARE MIXED USE DEVELOPMENT	356	0	0	0	356	0	0	0	0
11	GREENFIELDS AT WHITE MARSH	96	96	0	0	0	0	0	0	0
12	GREENLEIGH AT CROSSROADS - RESIDENTIAL	997	289	0	708	0	0	0	0	0
13	GYR PROPERTY	7	8	0	0	0	1	0	0	0
14	HUMPHREYS PROPERTY	2	3	0	0	0	1	0	0	0
15	KIEFER PROPERTY	2	10	0	0	0	8	0	0	0
16	KOL INVESTMENT PROPERTY	1	3	0	0	0	2	0	0	0
17	LUCAS, WM. M. PROPERTY - 111 HOMBERG AVE	2	2	0	0	0	0	0	0	0
18	MAKRES PROPERTY	3	3	0	0	0	0	0	0	0
19	MARTINS LANDING	250	0	0	0	250	0	0	0	0
20	MEADOWS AT HONEYGO	63	63	0	0	0	0	0	0	0
21	PARAGON AT NOTTINGHAM RIDGE PUD	250	0	0	0	250	0	0	0	0
22	RAVENHURST	90	0	0	90	0	0	0	0	0
23	RENAISSANCE SQUARE	29	67	0	48	81	51	0	35	81
25	SALTPETER MANOR NEW SUBMITTAL	1	5	0	0	0	4	0	0	0
26	SALVO JOSEPH C PROPERTY	26	0	0	26	0	0	0	0	0
27	SARWAR LANDING	7	7	0	0	0	0	0	0	0
28	SHIRLEY RIDGE	16	16	0	0	0	0	0	0	0
29	SILVER LAKE DANIEL PROPERTY	1	3	0	0	0	2	0	0	0
30	STRAWBERRY COURT, LLC PROPERTY	3	3	0	0	0	0	0	0	0
31	Strawbridge Commons PUD	58	0	0	58	0	0	0	0	0
32	THE PRESERVE AT WINDLASS RUN PUD	324	107	0	317	0	27	0	73	0
33	WINDLASS WOODS	20	20	0	0	0	0	0	0	0
	<b>Total</b>	<b>3083</b>	<b>936</b>	<b>0</b>	<b>1345</b>	<b>1252</b>	<b>215</b>	<b>0</b>	<b>154</b>	<b>81</b>

The table above includes development both inside and outside the boundary study area; only those developments within the study area are shown on the Planned Unit Development plot map. Please see the table below for a list of those developments and corresponding display numbers shown on the Planned Unit Development plot map.

Map Display Number	Lots Left to Build	Development Name	Single Family Detached Approved	Single Family-Semi Detached Approved	Single Family Attached Approved	Multi-Family Approved	Developed Single Family Detached	Developed Single Family Semi-Detached	Developed Single Family Attached	Developed Multi-Family
1	59	5737 ALLENDER ROAD	173	0	0	0	114	0	0	0
2	1	BENICEWICZ PROPERTY	2	0	0	0	1	0	0	0
3	324	THE PRESERVE AT WINDLASS RUN PUD	107	0	317	0	27	0	73	0
4	997	GREENLEIGH AT CROSSROADS - RESIDENTIAL	289	0	708	0	0	0	0	0
5	356	FRANKLIN SQUARE MIXED USE DEVELOPMENT	0	0	0	356	0	0	0	0
6	20	WINDLASS WOODS	20	0	0	0	0	0	0	0
7	96	GREENFIELDS AT WHITE MARSH	96	0	0	0	0	0	0	0
8	311	COWENTON SOUTH - 4th REFINED PLAN	0	0	0	311	0	0	0	0
9	90	RAVENHURST	0	0	90	0	0	0	0	0
10	250	PARAGON AT NOTTINGHAM RIDGE PUD	0	0	0	250	0	0	0	0
	<b>Total</b>		<b>687</b>	<b>0</b>	<b>1,115</b>	<b>917</b>	<b>142</b>	<b>0</b>	<b>73</b>	<b>0</b>