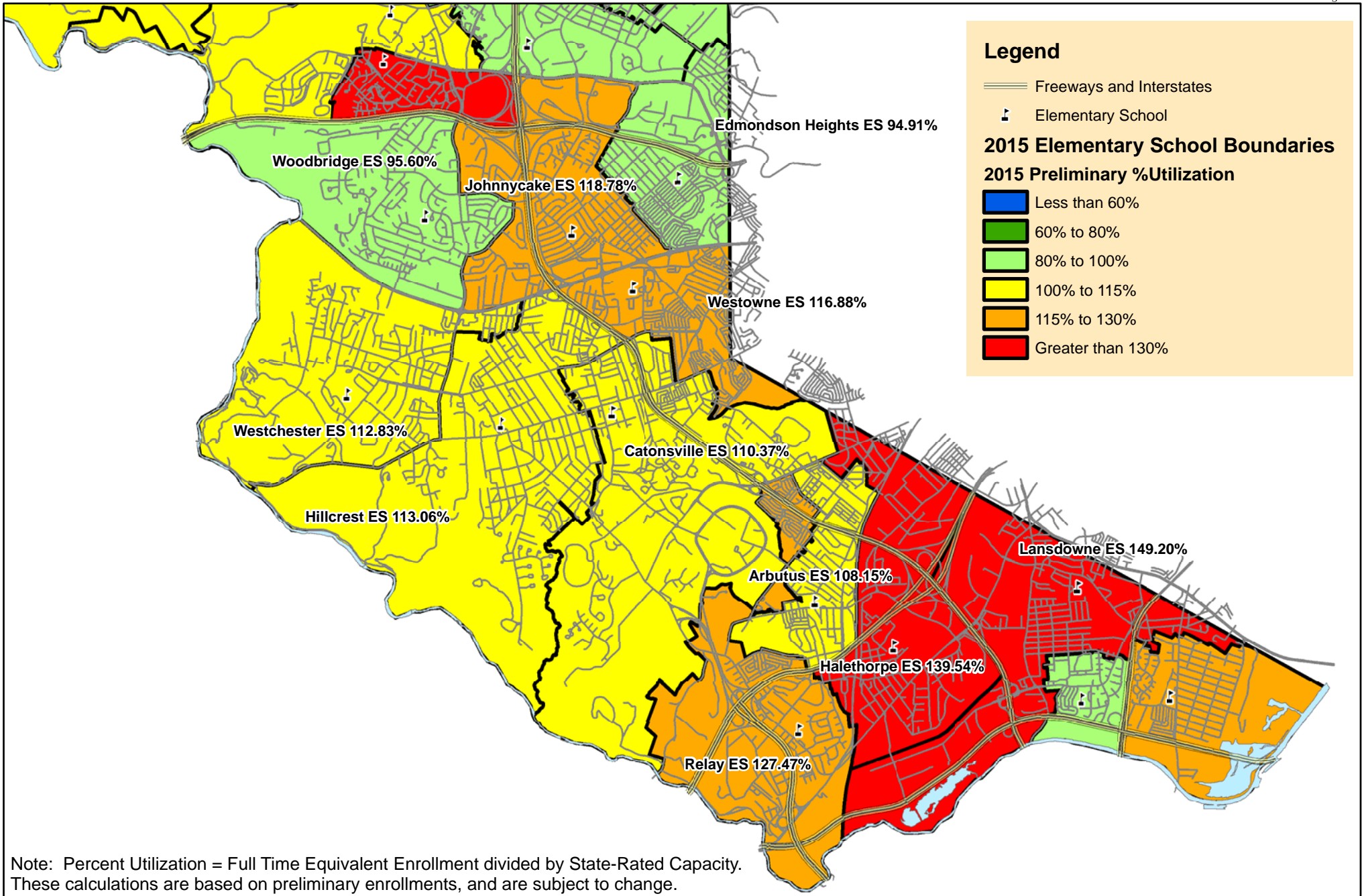


Southwest Area Boundary Study, September 30, 2015 Preliminary FTE Enrollment, Percent Utilization



Note: Percent Utilization = Full Time Equivalent Enrollment divided by State-Rated Capacity. These calculations are based on preliminary enrollments, and are subject to change.

Source: September 30, 2015 Preliminary Enrollment (10/2/2015) FTE
 Prepared by the Baltimore County Public Schools
 Office of Strategic Planning, October 14, 2015

