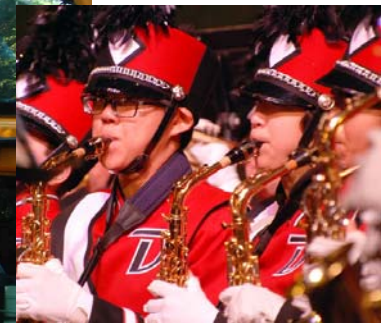


# Southwest Area Boundary Study Process -Committee Meeting 2-

September 30, 2015



# Welcome

## *Tonight's Agenda*

- 6:00 - 6:30** Review of new information and handouts of DRAFT baseline options
- 6:30 - 7:00** Break into 6 small working groups and review/markup options maps
- 7:00 - 7:20** Discuss initial thoughts regarding DRAFT baseline options
- 7:20 - 7:30** Discuss next steps and adjourn

# Welcome

## *Tonight's Goals*

### Tonight's Three Goals:

- #1. To provide follow-up and responses to committee requests and questions
- #2. To review DRAFT baseline options and related data
- #3. To discuss and mark up baseline options in small groups and provide feedback, ask questions, and continue to advance options

*Boundary Study Process  
Project Objectives - Review from  
Meeting #1*

# Project Objectives - Review from Meeting #1

## Why We're Here

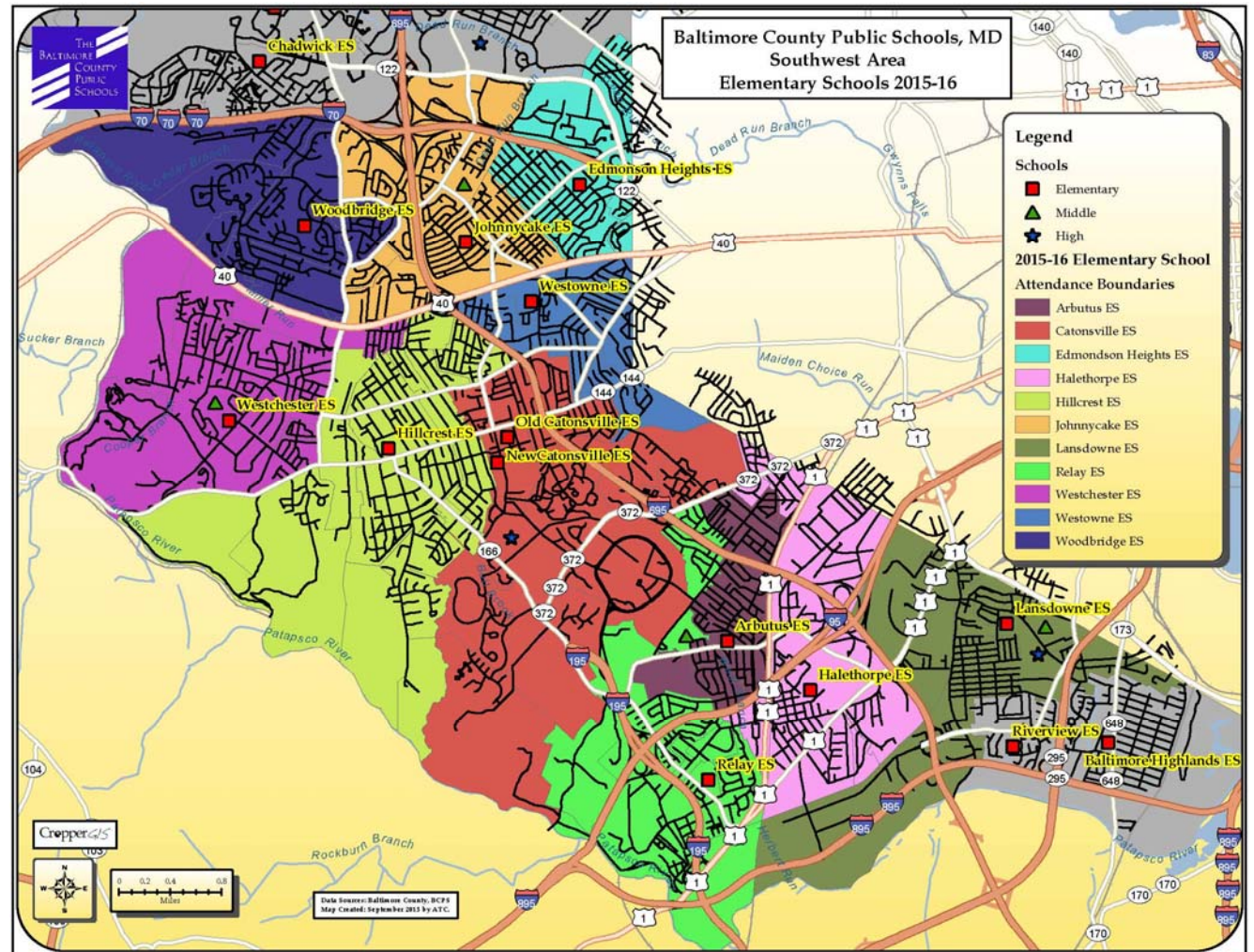
Baltimore County Public Schools has initiated an elementary school boundary study for the Southwest area schools. The Southwest area requires a study of boundaries for the following reasons:

- Nine (9) individual schools within the region are overcrowded;
- The Southwest study area is over capacity in aggregate;
- Westowne ES to have a replacement building, completed in the fall of 2016 on its existing site;
- Catonsville ES to have a replacement building completed in the fall of 2016 on a new site;
- Westchester ES to have an addition completed in the fall of 2016;
- Relay ES to have a replacement building completed in the fall of 2017 on the existing site;
- Some schools are at or under capacity while others are significantly over;
- Other regions in the SW Area will be targeted for future capacity relief efforts;

# Project Objectives - Review from Meeting #1

The following schools in the Southwest Area could be affected by the boundary study process:

1. Arbutus ES
2. Catonsville ES
3. Edmondson Heights ES
4. Halethorpe ES
5. Hillcrest ES
6. Johnnycake ES
7. Lansdowne ES
8. Relay ES
9. Westchester ES
10. Westowne ES
11. Woodbridge ES



# Guiding Principles - Review from Meeting #1

- Maintaining the continuity of neighborhoods
- Maintaining or increasing the diversity among schools to reflect the diversity of the region and the school system
- The impact of transportation and pedestrian patterns of students;
- Minimizing the number of times any one student is reassigned;
- Efficient use of capacity in all affected schools;
- Long term enrollment and capacity trends and future capital plans;
- Location of feeder school boundaries and continuity of feeder patterns

# Requests & Questions - Follow Up

## From Meeting #1 - Requests for Info:

- Maps with zoning and points of interest - industrial areas, college property, and other features.
- Maps with planned/approved residential development and number of units.
- Aerial imagery maps.
- Orientation to the online interactive map.

All information is provided in tonight's handouts and may be revised as needed for future meetings.



# Requests & Questions - Follow Up

## From Meeting #1 - Questions:

*Under what conditions may students choose to stay in their school once a boundary goes into effect?*

- Special permission transfer will be approved during the first year of a boundary change for students currently enrolled in Grades 4-5, 7-8, or 11-12 of the school affected by a change in attendance area, and students express their wish to remain in the school through their terminal grade.
- If a student who meets the criteria above has a sibling currently enrolled in the affected school, the sibling will be given the option of remaining in the affected school through his/her terminal grade.
  - Details and forms can be found in Policy and Rule 5140.

# Requests & Questions – Follow Up

*How were the planning blocks derived? Can they be modified?*

- Planning blocks are designed to represent boundary change guiding principles while creating a geographic unit – a community – that can remain as a unit for the purpose of exploring boundary change options.
  - Help us avoid unintentionally dividing neighborhoods as options are developed.
  - Are designed by considering neighborhood size and density, school feeder patterns, and major roads, railroads and other geographic features.
  - Are used best when committee carefully considers them and suggests necessary changes.

# Requests & Questions – Follow Up

*Have target attendance/utilization numbers been developed for the 11 schools?*

- The committee determines target utilization of impacted schools based on data provided and their conversation and deliberation. Data that will support the committee includes:
  - Detailed statistics on current and estimated enrollment for each DRAFT boundary change option
  - Overall utilization of the Southwest Area
  - Data on projected enrollment
  - Information regarding potential new housing

# Requests & Questions - Follow Up

*What other regions in the SW area are targeted for future capacity relief efforts?*

- The Board of Education requested funds to replace Lansdowne ES and add seating capacity in its FY 2017 Capital Improvement Program request.
  - Outcome of this request is pending - budget finalization is in May 2016.
  - Projects can take three years to complete once initial funding is identified.

# *State Rated Capacity*

## Study Area Schools Current Capacities:

ES name	2015 State Rated Capacity
Arbutus ES	405
Catonsville ES	405
Edmondson Heights ES	589
Halethorpe ES	392
Hillcrest ES	666
Johnnycake ES	559
Lansdowne ES	313
Relay ES	415
Westchester ES	499
Westowne ES	480
Woodbridge ES	432
<b>Total</b>	<b>5155</b>

## Future Study Area School Planned Capacities:

- Projects at:  
Catonsville ES  
Relay ES  
Westchester ES  
Westowne ES

ES name	2015 State Rated Capacity	Future Capacity
Arbutus ES	405	405
Catonsville ES	405	715
Edmondson Heights ES	589	589
Halethorpe ES	392	392
Hillcrest ES	666	666
Johnnycake ES	559	559
Lansdowne ES	313	313
Relay ES	415	689
Westchester ES	499	699
Westowne ES	480	650
Woodbridge ES	432	432
<b>Total</b>	<b>5155</b>	<b>6109</b>
*Student data as of 6/30/2015		

# *Current School Utilization*



# Current School utilization reinforces the need

ES name	2015 State Rated Capacity	2014-15 (End of Year) K-5 Grade Enrollment	2014-15 (End of Year) K-5 Enrollment Utilization	Live and Attend In	Live Out Attend In	2014-15 Enrollment Over/Under Capacity
Arbutus ES	405	418	103%	394	24	13
Catonsville ES	405	430	106%	400	30	25
Edmondson Heights ES	589	495	84%	491	4	-94
Halethorpe ES	392	472	120%	437	35	80
Hillcrest ES	666	796	120%	777	19	130
Johnnycake ES	559	642	115%	607	35	83
Lansdowne ES	313	434	139%	423	11	121
Relay ES	415	548	132%	488	60	133
Westchester ES	499	582	117%	569	13	83
Westowne ES	480	531	111%	491	40	51
Woodbridge ES	432	416	96%	375	41	-16
<b>Total</b>	<b>5155</b>	<b>5764</b>	<b>112%</b>	<b>5452</b>	<b>312</b>	<b>609</b>

\*Student data as of 6/30/2015

The estimated enrollment is calculated by adding the students that “Live Out and Attend In” a 2015-16 school to the total number of live in K-5th grade students within each new DRAFT option zone that “Live and Attend In” during the 2014-15 school year.

# *Review of DRAFT Options*

# *Review of DRAFT Options*

Things to Remember about DRAFT options:

- Nothing is written in stone
- Existing DRAFT Options are subject to change
- New options can/will be created

*Focus NOT on picking the best solution YET.  
Instead, openly explore the various options to present  
to the public for feedback.*

# *Review of DRAFT Options*

## 3 DRAFT Options:

- Committee has small and large format maps for review in the meeting
- Maps are also on the interactive webmap ([www.croppermap.com/bcps southwest](http://www.croppermap.com/bcps southwest)) available via BCPS.org.
- Copies of all handouts, including small and large format maps will be posted on BCPS website (<http://www.bcps.org/construction/southwest/>)

# *Review of DRAFT Options*

- **Study the geography**
  - Look at where the lines shift away from current vs. DRAFT option boundary.
  - Look at road networks and envision how school buses and parents would travel to the school
- **Study the tables**
  - Review the balance of enrollment, utilization, and student demographics. Identify any imbalances that may exist.
  - Understand reasons for imbalances and examine ways to improve the balance.

# *Review of DRAFT Options*

- **Review the Guiding Principals**
  - Understand how DRAFT options support boundary study guiding principals
  - Examine ways to improve alignment with guiding principals

*Examination / Review  
of  
Options Maps*

*Referencing online interactive map  
([www.croppermap.com/bcpssouthwest](http://www.croppermap.com/bcpssouthwest)), handouts,  
and large hard-copy maps*



*Examination / Review  
of  
Options Tables*

ES name	2015 State Rated Capacity	Future Capacity	2014-15 (End of Year) K-5 Grade Enrollment	Option 1 Estimated Enrollment	Option 2 Estimated Enrollment	Option 3 Estimated Enrollment
Arbutus ES	405	405	418	364	386	366
Catonsville ES	405	715	430	658	655	662
Edmondson Heights ES	589	589	495	540	583	535
Halethorpe ES	392	392	472	357	353	355
Hillcrest ES	666	666	796	621	612	640
Johnnycake ES	559	559	642	514	512	514
Lansdowne ES	313	313	434	372	372	372
Relay ES	415	689	548	653	626	653
Westchester ES	499	699	582	632	644	665
Westowne ES	480	650	531	637	605	595
Woodbridge ES	432	432	416	416	416	407
<b>Total</b>	<b>5155</b>	<b>6109</b>	<b>5764</b>	<b>5764</b>	<b>5764</b>	<b>5764</b>

\*Student data as of 6/30/2015

The estimated enrollment is calculated by adding the students that “Live Out and Attend In” a 2015-16 school to the total number of live in K-5th grade students within each new DRAFT option zone that “Live and Attend In” during the 2014-15 school year.

ES name	2015 State Rated Capacity	Future Capacity	2014-15 (End of Year) K-5 Enrollment Utilization	Option 1 Estimated Utilization	Option 2 Estimated Utilization	Option 3 Estimated Utilization
Arbutus ES	405	405	103%	90%	95%	90%
Catonsville ES	405	715	106%	92%	92%	93%
Edmondson Heights ES	589	589	84%	92%	99%	91%
Halethorpe ES	392	392	120%	91%	90%	91%
Hillcrest ES	666	666	120%	93%	92%	96%
Johnnycake ES	559	559	115%	92%	92%	92%
Lansdowne ES	313	313	139%	119%	119%	119%
Relay ES	415	689	132%	95%	91%	95%
Westchester ES	499	699	117%	90%	92%	95%
Westowne ES	480	650	111%	98%	93%	92%
Woodbridge ES	432	432	96%	96%	96%	94%
<b>Total</b>	<b>5155</b>	<b>6109</b>	<b>112%</b>	<b>94%</b>	<b>94%</b>	<b>94%</b>

\*Student data as of 6/30/2015

The estimated enrollment is calculated by adding the students that “Live Out and Attend In” a 2015-16 school to the total number of live in K-5th grade students within each new DRAFT option zone that “Live and Attend In” during the 2014-15 school year.

ES name	2015 State Rated Capacity	Future Capacity	2014-15 Enrollment Over/Under Capacity	Option 1	Option 2	Option 3
Arbutus ES	405	405	13	-41	-19	-39
Catonsville ES	405	715	25	-57	-60	-53
Edmondson Heights ES	589	589	-94	-49	-6	-54
Halethorpe ES	392	392	80	-35	-39	-37
Hillcrest ES	666	666	130	-45	-54	-26
Johnnycake ES	559	559	83	-45	-47	-45
Lansdowne ES	313	313	121	59	59	59
Relay ES	415	689	133	-36	-63	-36
Westchester ES	499	699	83	-67	-55	-34
Westowne ES	480	650	51	-13	-45	-55
Woodbridge ES	432	432	-16	-16	-16	-25
<b>Total</b>	<b>5155</b>	<b>6109</b>	<b>609</b>	<b>-345</b>	<b>-345</b>	<b>-345</b>

\*Student data as of 6/30/2015

The estimated enrollment is calculated by adding the students that “Live Out and Attend In” a 2015-16 school to the total number of live in K-5th grade students within each new DRAFT option zone that “Live and Attend In” during the 2014-15 school year.

ES name	Percent Minority			
	2014-15 Enrolled	Option 1	Option 2	Option 3
Arbutus ES	36%	27%	36%	27%
Catonsville ES	40%	56%	51%	52%
Edmondson Heights ES	95%	94%	96%	95%
Halethorpe ES	56%	38%	35%	38%
Hillcrest ES	33%	30%	33%	27%
Johnnycake ES	94%	94%	90%	93%
Lansdowne ES	48%	52%	52%	52%
Relay ES	31%	36%	33%	36%
Westchester ES	31%	29%	29%	39%
Westowne ES	54%	58%	60%	59%
Woodbridge ES	84%	84%	84%	84%
<b>Total</b>	<b>54%</b>	<b>54%</b>	<b>54%</b>	<b>54%</b>

\*Student data as of 6/30/2015

The estimated enrollment is calculated by adding the students that “Live Out and Attend In” a 2015-16 school to the total number of live in K-5th grade students within each new DRAFT option zone that “Live and Attend In” during the 2014-15 school year.

ES name	Free-Reduced Lunch Percentages			
	2014-15 K-5th Enrolled	Option 1	Option 2	Option 3
Arbutus ES	54%	50%	53%	49%
Catonsville ES	34%	55%	50%	51%
Edmondson Heights ES	75%	72%	78%	77%
Halethorpe ES	66%	56%	58%	57%
Hillcrest ES	25%	24%	25%	21%
Johnnycake ES	80%	80%	77%	77%
Lansdowne ES	78%	80%	80%	80%
Relay ES	39%	41%	37%	41%
Westchester ES	24%	22%	22%	30%
Westowne ES	46%	47%	48%	47%
Woodbridge ES	54%	54%	54%	56%
<b>Total</b>	<b>51%</b>	<b>51%</b>	<b>51%</b>	<b>51%</b>

\*Student data as of 6/30/2015

The estimated enrollment is calculated by adding the students that “Live Out and Attend In” a 2015-16 school to the total number of live in K-5th grade students within each new DRAFT option zone that “Live and Attend In” during the 2014-15 school year.

Option	Total K-5 Live and Attend In Students Impacted
Option 1	1014
Option 2	951
Option 3	1126

2015-16 ES Boundary	ES Option 1 Boundary	Total K-5 Live and Attend In Students
Arbutus ES	Arbutus ES	310
Arbutus ES	Halethorpe ES	11
Arbutus ES	Relay ES	73
Catonsville ES	Catonsville ES	274
Catonsville ES	Hillcrest ES	49
Catonsville ES	Relay ES	35
Catonsville ES	Westowne ES	42
Edmondson Heights ES	Edmondson Heights ES	491
Halethorpe ES	Arbutus ES	27
Halethorpe ES	Catonsville ES	161
Halethorpe ES	Halethorpe ES	249
Hillcrest ES	Catonsville ES	39
Hillcrest ES	Hillcrest ES	553
Hillcrest ES	Westchester ES	50
Hillcrest ES	Westowne ES	135
Johnnycake ES	Johnnycake ES	479
Johnnycake ES	Westowne ES	128
Lansdowne ES	Halethorpe ES	62
Lansdowne ES	Lansdowne ES	361
Relay ES	Arbutus ES	3
Relay ES	Relay ES	485
Westchester ES	Westchester ES	569
Westowne ES	Catonsville ES	154
Westowne ES	Edmondson Heights ES	45
Westowne ES	Westowne ES	292
Woodbridge ES	Woodbridge ES	375

# *Small Group Exercise*

- *Break into 6 groups*
- *Each group will have 30 minutes to review the DRAFT options (10 minutes per option).*
- *Circle, highlight, and write notes on any area on the map they feel needs to be addressed.*
- *Small group review of 3 options will be followed by reporting out and discussion about findings, observations, suggestions.*



# **Examination / Review of Maps & Data - Discussion about findings, observations, suggestions, quesitons**

# General Announcements and Upcoming Schedule

# General Announcements & Upcoming Schedule

## October 2014: Upcoming Events

Sun	Mon	Tue	Wed	Thu	Fri	Sat
Sept. 27	28	29	30 Committee Meeting 2 6:00 – 7:30 pm	October 1	2	3
4	5	6	7	8	9	10
11	12	13	14 Committee Meeting 3 6:00 – 7:30 pm	15	16	17
18	19	20	21	22	23	24

**See you next meeting on  
October 14, 2015!**

**Same time, same place**



## Baltimore County Public Schools 2015-2016 Southwest Area Elementary Boundary Change Process – Boundary Study Timeline

<http://www.bcps.org>



SW Boundary Committee Meeting 1	SW Boundary Committee Meeting 2	SW Boundary Committee Meeting 3	SW Boundary Committee Meeting 4	SW Boundary Committee Meeting 5	Public Information Session	SW Boundary Committee Meeting 6	Recommendation to Board
<b>Meeting 1</b> Wednesday, Sept. 16, 2015 6 – 7:30 p.m. Catonsville HS Cafeteria	<b>Meeting 2</b> Wednesday, Sept. 30, 2015 6 – 7:30 p.m. Catonsville HS Cafeteria	<b>Meeting 3</b> Wednesday, Oct. 14, 2015 6 – 7:30 p.m. Catonsville HS Cafeteria	<b>Meeting 4</b> Wednesday, Oct. 28, 2015 6 – 7:30 p.m. Catonsville HS Cafeteria	<b>Meeting 5</b> Wednesday, Nov. 11, 2015 6 – 7:30 p.m. Catonsville HS Cafeteria	<b>Public Information Session</b> Wednesday, Nov. 18, 2015 7 – 8 p.m. Catonsville HS Cafeteria	<b>Meeting 6</b> Wednesday, Dec. 9, 2015 6 – 7:30 p.m. Catonsville HS Cafeteria	<b>Recommendation to Board</b> Tuesday February 2, 2016 7 p.m. Greenwood Building E
<ul style="list-style-type: none"> <li>• Introduction of committee members</li> <li>• Introduction of process &amp; timeline</li> <li>• Criteria for decision making</li> <li>• SWOT Analysis</li> <li>• Background Report Overview</li> </ul>	<ul style="list-style-type: none"> <li>• Recap Background Report and Q/A.</li> <li>• Review planning blocks and baseline options</li> <li>• Small group discussions &amp; review of baseline options</li> </ul>	<ul style="list-style-type: none"> <li>• Provide updated information/data and Q/A on process to date</li> <li>• Develop and evaluate scenarios</li> <li>• Consensus building exercises around various options (if necessary)</li> </ul>	<ul style="list-style-type: none"> <li>• Develop &amp; evaluate various scenarios</li> <li>• Consensus building exercises around various options (if necessary)</li> <li>• Select viable scenarios for Public Information Session</li> </ul>	<ul style="list-style-type: none"> <li>• Review proposed options for Public Information Session</li> <li>• Discuss logistics for Public Information Session</li> </ul> <p style="text-align: center;">❄️ <b>SNOW DATE</b> ❄️  <b>Thursday, Nov. 12<sup>th</sup></b>  <b>5:30 - 7:30 p.m.</b>  <b>Catonsville HS Cafeteria</b></p>	<ul style="list-style-type: none"> <li>• 6:30 p.m. Arrival of committee and review of process</li> <li>• 7 p.m. Welcome general public</li> <li>• Explanation of process</li> <li>• Presentation of data</li> <li>• Break to view large maps on easels</li> <li>• Committee members facilitate discussion around maps</li> <li>• Public encouraged to participate in online survey; access available until midnight on Nov. 29, 2015</li> </ul> <p style="text-align: center;">❄️ <b>SNOW DATE</b> ❄️  <b>Thursday, Nov. 19<sup>th</sup></b>  <b>5:30 – 7:30 p.m.</b>  <b>Catonsville HS Cafeteria</b></p>	<ul style="list-style-type: none"> <li>• Review Public Information Session feed-back, and suggested changes to options per feedback, if any</li> <li>• Select Scenario to be recommended to the Board of Ed.</li> </ul> <p style="text-align: center;">❄️ <b>SNOW DATE</b> ❄️  <b>Thursday, Dec. 10<sup>th</sup></b>  <b>5:30 – 7:30 p.m.</b>  <b>Catonsville HS Cafeteria</b></p>	<p style="text-align: center;"><b>Board Hearing</b>            10+ Days Prior to Decision</p> <p style="text-align: center;"><b>Wednesday, February 17, 2015</b>            7 p.m.            Location T.B.D.</p> <p style="text-align: center;">❄️ <b>SNOW DATE</b> ❄️  <b>Thursday February 18, 2016</b>            Location T.B.D.</p>
							<p style="text-align: center;"><b>Board Decision</b>            Tuesday, March 1, 2016            7 p.m.            Greenwood Building E</p>

Light dinner will be provided for committee members at committee meetings 1-6.  
 Agenda topics are preliminary and subject to change based on the work of the committee.

- Mtgs of SW Boundary Committee members; general public may attend to observe  
 All meetings live streamed and meeting materials posted to BCPS Web site
- Special mtgs. open to the general public; attendance & participation encouraged
- BOE** Regular Board of Education meetings; general public welcome to attend

❄️ Please note Snow Dates for Meeting 5, Public Information Session, Meeting 6, and the February 2016 BOE Hearing