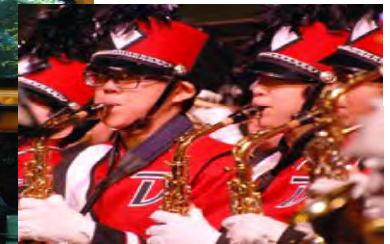


Northwest Area Redistricting Study -Public Information Session- November 19, 2014



Welcome and Introductions

Who We Are

The Company

Cropper GIS Consulting, LLC

K-12 school planning is our business and our passion. Our specialty is redistricting.

Cropper GIS works with K-12 school districts to:

- develop redistricting plans,
- facilitate community engagement,
- research, map and write demographic studies,
- prepare long-range facility master plans,
- author site feasibility studies,
- conduct & publish housing impact and yield factor studies
- provide GIS implementation & training.



The Company

Who We Are

Recent Projects:

- Baltimore County Public Schools, MD
- Frederick County Public Schools, MD
- Richmond Public Schools, VA
- Henrico County Public Schools, VA
- Atlanta Public Schools, GA
- Alleghany County Public Schools, VA
- Charleston County Public Schools, SC
- U.S. Department of Justice, Civil Rights



Purpose

Public Information Session

1. **Learn** how the community-based redistricting process has been working.
2. **Review DRAFT** redistricting options for Elementary Schools in the Northwest area
3. **Complete** online surveys related to the options to provide valuable input to the committee.

Redistricting Study Project Goals

Project Objectives

Why We're Here

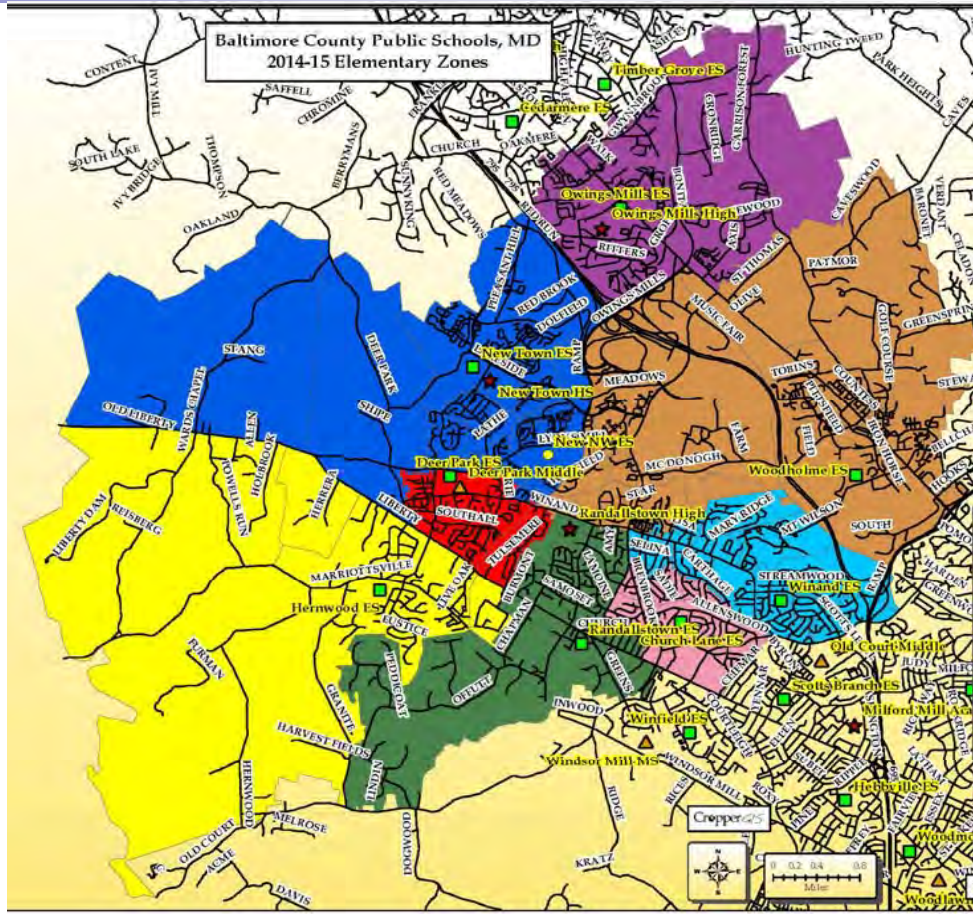
1. Baltimore County Public Schools is building a new elementary school in the northwest area of the district.
 - a) Opening in Fall 2015
 - b) 700-student capacity
2. Schools throughout the region are overcrowded, and redistricting is necessary to balance building utilization and populate the new school.
3. BCPS has organized a committee-based process to work through redistricting options and plans.
 - a) Work will continue through Winter 2015

Project Objectives

Potential Affected Schools

The following schools in the Northwest Area could be affected by the redistricting process:

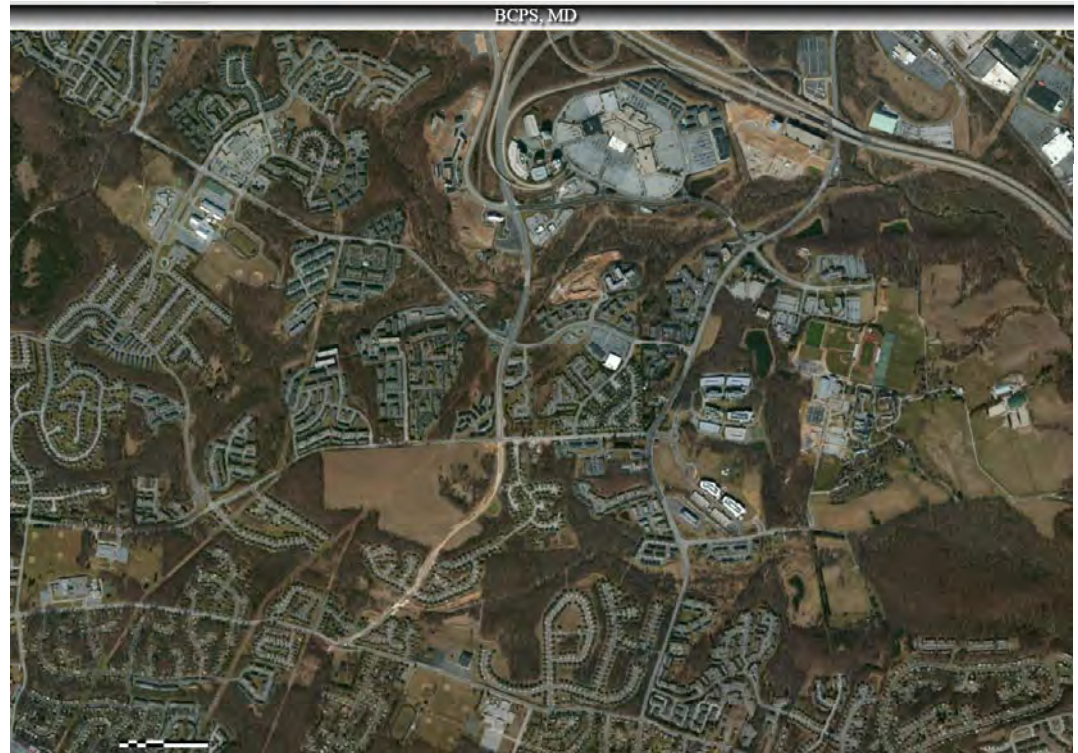
1. Church Lane ES
2. Deer Park ES
3. Hernwood ES
4. New Town ES
5. Owings Mills ES
6. Randallstown ES
7. Winand ES
8. Woodholme ES



Guiding Principles / Criteria

Why We're Here

- ❑ Maintaining the continuity of neighborhoods
- ❑ Maintaining the increased diversity among schools to reflect diversity of the region and the school system
- ❑ Be mindful of the impact of transportation and pedestrian patterns on students
- ❑ Minimize the number of times any one student is reassigned



Guiding Principles / Criteria

Why We're Here

- ❑ Efficient use of capacity in all affected schools
- ❑ Be mindful of long term enrollment and capacity trends and future capital plans
- ❑ Be mindful of the location of feeder school boundaries and continuity of feeder patterns






Project Timeline



Baltimore County Public Schools Community Boundary Change Process and Timeline for the New Northwest Area Elementary School



NW Boundary Committee Meeting 1	NW Boundary Committee Meeting 2	NW Boundary Committee Meeting 3	NW Boundary Committee Meeting 4	NW Boundary Committee Meeting 5	Public Information Session	NW Boundary Committee Meeting 6	Recommendation to Board
<p>Wednesday, Sept. 17, 2014 6:00-7:30 p.m.</p> <p>New Town High School Cafeteria</p> <ul style="list-style-type: none"> 5:30-6:00 p.m. Light dinner for committee members 6:00 p.m. Start mtg Introduction of committee members Introduction of process & timeline Criteria for decision making SWOT Analysis Background Report Overview -Schools Considered -Enrollments -Capacities -Geography -Demographics -Development 	<p>Wednesday, Oct. 1, 2014 6:00-7:30 p.m.</p> <p>New Town High School Cafeteria</p> <ul style="list-style-type: none"> 5:30-6:00 p.m. Light dinner for committee members 6:00 p.m. Start mtg Recap Background report and Q/A. Review planning blocks and baseline options Small group discussions & review of baseline options 	<p>Wednesday, Oct. 15, 2014 6:00-7:30 p.m.</p> <p>New Town High School Cafeteria</p> <ul style="list-style-type: none"> 5:30-6:00 p.m. Light dinner for committee members 6:00 p.m. Start mtg Provide updated information/data & Q/A on process to date. Develop and evaluate scenarios Consensus bldg exercises around various options (if necessary) 	<p>Wednesday, Oct. 29, 2014 6:00-7:30 p.m.</p> <p>New Town High School Cafeteria</p> <ul style="list-style-type: none"> 5:30-6:00 p.m. Light dinner for committee members 6:00 p.m. Start mtg Develop & evaluate various scenarios Consensus building exercises around various options (if necessary) Select viable scenarios for Public Information Session 	<p>Wednesday, Nov. 12, 2014 6:00-7:30 p.m.</p> <p><i>*Deer Park Middle Cafeteria</i></p> <ul style="list-style-type: none"> 5:30-6:00 p.m. Light dinner for committee members 6:00 p.m. Start mtg Review proposed options for Public Information Session Discuss logistics for Public Information Session <p>**SNOW DATE** Thursday, Nov. 13th 5:30-7:30 p.m. <i>New Town HS</i></p>	<p>Wednesday, Nov. 19, 2014 7:00-8:00 p.m.</p> <p>New Town HS Auditorium</p> <ul style="list-style-type: none"> 6:30 p.m. Arrival of committee and review of process 7:00 p.m. Welcome general public Explanation of process Presentation of data Break to view large maps on easels Committee members facilitate discussion around maps Public encouraged to participate in online survey; online access available until 7pm on Nov. 26, 2014 <p>**SNOW DATE** Thursday, Nov. 20th 5:30 - 7:30 p.m. <i>New Town HS Cafe</i></p>	<p>Wednesday, Dec. 10, 2014 6:00-7:30 p.m.</p> <p><i>*Deer Park Middle Cafeteria</i></p> <ul style="list-style-type: none"> 5:30-6:00 p.m. Light dinner available for committee members 6:00 p.m. Start mtg Review Public Information Session feedback, and suggested changes to options per feedback, if any. Select Scenario to be Recommended to the Board of Ed. <p>**SNOW DATE** Thursday, Dec. 11th 5:30 - 7:30 p.m. <i>New Town HS</i></p>	<p>Tuesday, February 3, 2015 7:00 p.m. ESS Building</p> <p>Board Hearing 10+ Days Prior to Decision</p> <p>Tuesday, February 10, 2015 7:00 p.m. New Town High School Auditorium</p> <p>**SNOW DATE** Thursday, February 12, 2015</p> <p>Board of Education Decision</p> <p>Tuesday, March 3, 2015 7:00 p.m. ESS Building</p>
<p> Mtgs of NW Boundary Committee members; general public may attend to observe</p> <p> Special mtgs open to the general public; attendance & participation encouraged</p> <p> BOE Regular Board of Education meetings; general public welcome to attend</p>					<p>* Please note different locations of Meetings 5 & 6</p> <p>** Please note SNOW DATES/ Locations of Meeting 5, Public Information Session, Meeting 6, and February 2015 Board Of Education Hearing</p>		
<p>BCPS Office of Strategic Planning - Timeline UPDATED 9/9/14</p>							

Work Done to Date:

Committee's Work

- Process started back in September 2014
- The committee has reviewed 16 various DRAFT options for the study area since then.
- Started with 4, and feedback brought 3-4 additional scenarios per meeting as the committee explored options
- More recent options were evolutions of beginning options per committee and public feedback.

Committee's Work

- Hours of time and effort put into reviewing options maps and statistics
- Committee members have even gone beyond expectations to reach out to their community to gain input on the variety of options as they have been drafted.
- Given the persistent residential growth in the region, the committee acknowledges that the New Elementary School will NOT solve all of the overcrowding challenges in the area.

Committee's Work

- The public have called and/or sent emails from across the study area, suggesting boundary configurations that adhere to the criteria and objectives.
- Committee and public input have been incorporated into the options **ONLY** if they bring us closer to our goals and objectives.
- The committee feedback and public input to date has been invaluable!

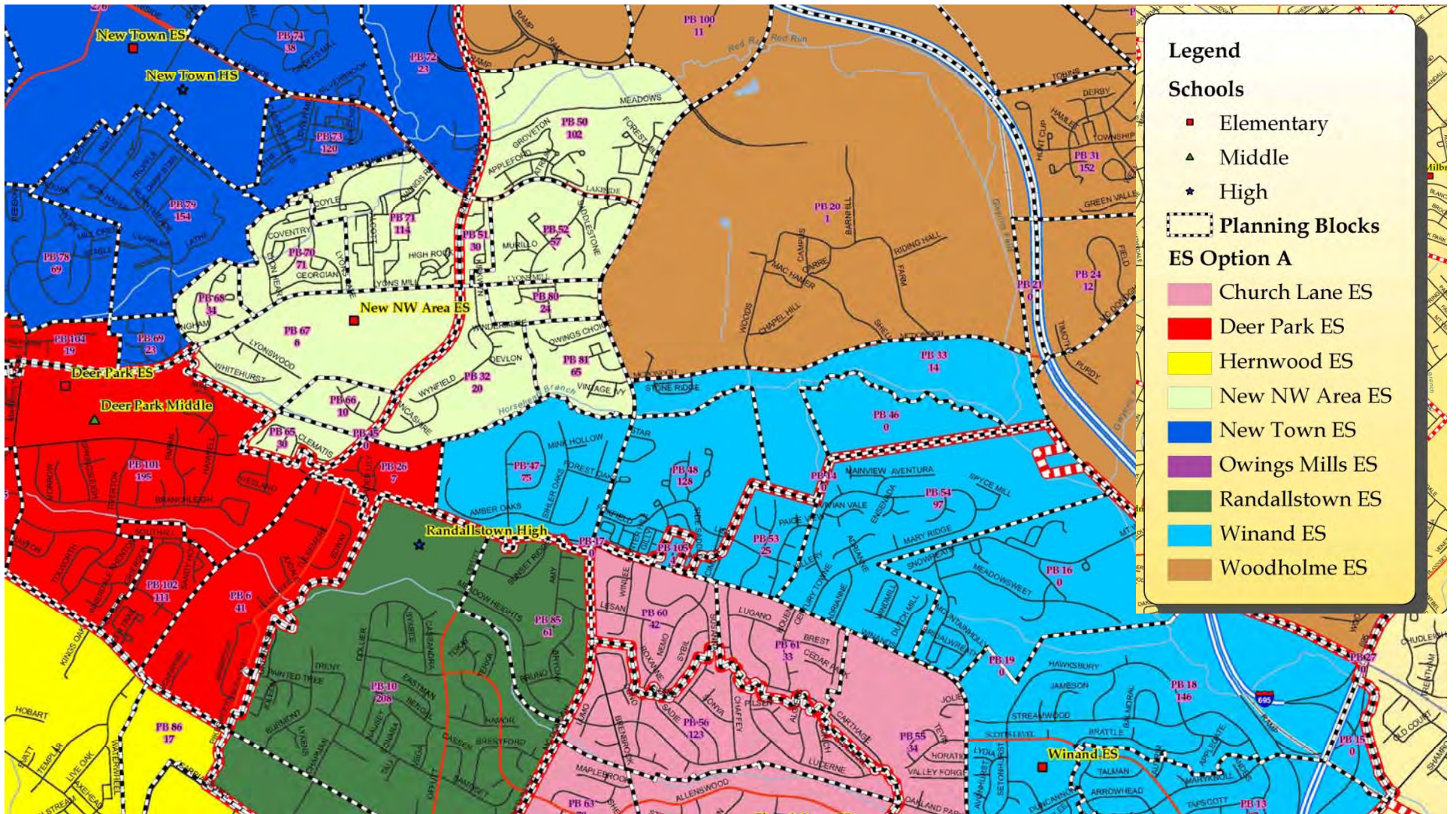
Committee's Work

- Any/all options are DRAFT through the whole process, and are subject to change. The focus must remain on the objectives and criteria!
- Cropper GIS has also been in constant contact with BCPS Office of Strategic Planning (OSP) to review the options and details of the project.

Committee's Work

- The committee's role is one part of this process. Even after the committee recommends a scenario, it will continue to be DRAFT as it goes through review with the Assistant Superintendent, then to the Superintendent, and finally to the Board of Education.
- Nothing will be FINAL until the Board of Education approves a plan.

Interpreting the maps



New Town ES

New Town HS

New NW Area ES

Deer Park ES

Deer Park Middle

Randallstown High

Winand ES

PB 74 83

PB 72 23

PB 50 102

PB 51 30

PB 71 114

PB 70 71

PB 52 57

PB 80 24

PB 81 65

PB 32 20

PB 66 10

PB 65 30

PB 45 7

PB 26 7

PB 47 75

PB 48 128

PB 105 1

PB 53 25

PB 60 42

PB 61 33

PB 56 123

PB 63 30

PB 55 34

PB 19 0

PB 18 146

PB 15 0

PB 13 101

PB 16 0

PB 24 12

PB 21 6

PB 20 1

PB 100 11

PB 31 152

PB 73 180

PB 79 154

PB 69 69

PB 104 19

PB 69 23

PB 101 155

PB 102 111

PB 6 41

PB 10 208

PB 85 61

PB 86 17

PB 150 1

PB 152 152

PB 153 153

PB 154 154

PB 155 155

PB 156 156

PB 157 157

PB 158 158

PB 159 159

PB 160 160

PB 161 161

PB 162 162

PB 163 163

PB 164 164

PB 165 165

PB 166 166

PB 167 167

PB 168 168

PB 169 169

PB 170 170

PB 171 171

PB 172 172

PB 173 173

PB 174 174

PB 175 175

PB 176 176

PB 177 177

PB 178 178

PB 179 179

PB 180 180

PB 181 181

PB 182 182

PB 183 183

PB 184 184

PB 185 185

PB 186 186

PB 187 187

PB 188 188

PB 189 189

PB 190 190

PB 191 191

PB 192 192

PB 193 193

PB 194 194

PB 195 195

PB 196 196

PB 197 197

PB 198 198

PB 199 199

PB 200 200

PB 201 201

PB 202 202

PB 203 203

PB 204 204

PB 205 205

PB 206 206

PB 207 207

PB 208 208

PB 209 209

PB 210 210

PB 211 211

PB 212 212

PB 213 213

PB 214 214

PB 215 215

PB 216 216

PB 217 217

PB 218 218

PB 219 219

PB 220 220

PB 221 221

PB 222 222

PB 223 223

PB 224 224

PB 225 225

PB 226 226

PB 227 227

PB 228 228

PB 229 229

PB 230 230

PB 231 231

PB 232 232

PB 233 233

PB 234 234

PB 235 235

PB 236 236

PB 237 237

PB 238 238

PB 239 239

PB 240 240

PB 241 241

PB 242 242

PB 243 243

PB 244 244

PB 245 245

PB 246 246

PB 247 247

PB 248 248

PB 249 249

PB 250 250

PB 251 251

PB 252 252

PB 253 253

PB 254 254

PB 255 255

PB 256 256

PB 257 257

PB 258 258

PB 259 259

PB 260 260

PB 261 261

PB 262 262

PB 263 263

PB 264 264

PB 265 265

PB 266 266

PB 267 267

PB 268 268

PB 269 269

PB 270 270

PB 271 271

PB 272 272

PB 273 273

PB 274 274

PB 275 275

PB 276 276

PB 277 277

PB 278 278

PB 279 279

PB 280 280

PB 281 281

PB 282 282

PB 283 283

PB 284 284

PB 285 285

PB 286 286

PB 287 287

PB 288 288

PB 289 289

PB 290 290

PB 291 291

PB 292 292

PB 293 293

PB 294 294

PB 295 295

PB 296 296

PB 297 297

PB 298 298

PB 299 299

PB 300 300

PB 301 301

PB 302 302

PB 303 303

PB 304 304

PB 305 305

PB 306 306

PB 307 307

PB 308 308

PB 309 309

PB 310 310

PB 311 311

PB 312 312

PB 313 313

PB 314 314

PB 315 315

PB 316 316

PB 317 317

PB 318 318

PB 319 319

PB 320 320

PB 321 321

PB 322 322

PB 323 323

PB 324 324

PB 325 325

PB 326 326

PB 327 327

PB 328 328

PB 329 329

PB 330 330

PB 331 331

PB 332 332

PB 333 333

PB 334 334

PB 335 335

PB 336 336

PB 337 337

PB 338 338

PB 339 339

PB 340 340

PB 341 341

PB 342 342

PB 343 343

PB 344 344

PB 345 345

PB 346 346

PB 347 347

PB 348 348

PB 349 349

PB 350 350

PB 351 351

PB 352 352

PB 353 353

PB 354 354

PB 35

Interpreting the tables

Current 2014-15 Enrollment and Live-In Stats

2014-15 Enrollment and Live-In Utilization Statistics							
School	State Rated Capacity (SRC)	Total PK-5 Enrollment	2014-15 K-5 Grade Enrollment	2014-15 K-5 Live-In	K-5 Enrollment Utilization	2014-15 K-5 Live-In Utilization	2014-15 Live-In Over/Under SRC
Church Lane ES	476	499	479	385	101%	81%	-91
Deer Park ES	451	492	451	417	100%	92%	-34
Hernwood ES	415	460	407	429	98%	103%	14
New Town ES	703	944	944	1056	134%	150%	353
New NW ES	700	0					
Owings Mills ES	699	915	835	891	119%	127%	192
Randallstown ES	398	373	373	390	94%	98%	-8
Winand ES	583	606	504	478	86%	82%	-105
Woodholme ES	676	933	933	1024	138%	151%	348
Total	5101	5222	4926	5070	112%	115%	669

Cr *Student data as of 9/30/2014

Option Capacity and Utilization Live-In Stats

School	State Rated Capacity (SRC)	2014-15 K-5 Grade Enrollment	OPTION A		
			ES Option A K-5 Live-In	ES Option A K-5 Live-In Util.	ES Option A Over/Under SRC
Church Lane ES	476	479	494	104%	18
Deer Park ES	451	451	443	98%	-8
Hernwood ES	415	407	429	103%	14
New Town ES	703	944	770	110%	67
New NW ES	700		565	81%	-135
Owings Mills ES	699	835	718	103%	19
Randallstown ES	398	373	390	98%	-8
Winand ES	583	504	586	101%	3
Woodholme ES	676	933	675	100%	-1
Total	5101	4926	5070	99%	-31

*Student data as of 9/30/2014

Demographic Live-In Stats

Demographic Live-In Statistics										
School	Percent Minority					Free-Reduced Lunch Percentages				
	2014-15 Live In	ES Option A	ES Option B	ES Option C	ES Option D	2014-15 Live In	ES Option A	ES Option B	ES Option C	ES Option D
Church Lane ES	99%	99%	99%	99%	99%	71%	70%	71%	71%	71%
Deer Park ES	99%	99%	99%	99%	99%	65%	63%	64%	64%	64%
Hernwood ES	97%	97%	97%	97%	97%	67%	67%	67%	67%	67%
New Town ES	92%	91%	91%	91%	91%	36%	35%	35%	35%	35%
New NW ES	NA	94%	94%	94%	96%	NA	46%	43%	44%	43%
Owings Mills ES	92%	91%	91%	92%	92%	73%	68%	68%	73%	73%
Randallstown ES	97%	97%	97%	97%	97%	66%	66%	66%	66%	66%
Winand ES	98%	98%	98%	98%	98%	63%	56%	63%	63%	63%
Woodholme ES	92%	91%	92%	92%	89%	51%	63%	63%	56%	53%
Total	95%	95%	95%	95%	95%	58%	58%	58%	58%	58%

*Student data as of 9/30/2014
Copper

Student Impact Live-In Stats

Student Impact Estimates	
Option	Total K-5 Live-In Impacted
Option A	1090
Option B	847
Option C	784
Option D	639

*Student data as of 9/30/2014

Potential Future Enrollment*					
School Name	State Rated Capacity	Option A	Option B	Option C	Option D
Church Lane ES	476	504	395	395	395
Deer Park ES	451	481	474	474	474
Hernwood ES	415	463	463	463	463
New NW ES	700	655	851	885	703
New Town ES	703	800	834	800	800
Owings Mills ES	699	766	766	860	939
Randallstown ES	398	395	395	395	395
Winand ES	583	640	528	528	528
Woodholme ES	676	786	784	690	793
Total	5101	5490	5490	5490	5490

Potential Future Enrollment

* Potential enrollment estimated by adding K-5 grade Live-In totals + 2014-15 Pre-K enrollment + Estimated students from new residential development.

Potential enrollment totals assume all platted/approved developments are built-out and fully yielding students.

*This is not intended to be a popular
vote:*

Public feedback isn't intended to see what option gets the most votes from the public.

The best feedback:

Looking for constructive comments regarding changes that better adhere to the criteria and objectives.

Next Steps:

Online Surveys are due November 26th, but please provide feedback as soon as possible!

Committee will review additional public feedback from online surveys

Adjustments could be made to DRAFT options if suggestions help to better adhere to the criteria and objectives

If you have any questions about the process, please review the Northwest Redistricting section on the BCPS website

Now is your time to review the maps and provide feedback.

Thank you for your commitment to the redistricting study for the Northwest Area!