

Northwest Area Redistricting Study -Committee Meeting 3-

October 15, 2014



Welcome

Tonight's Agenda

5:30 - 6:00 Light Dinner

6:00 - 6:10 Discuss if any final planning block cuts are necessary and come to consensus on them

6:10 - 6:30 Provide an overview of new data and information since last meeting

6:30 - 7:15 Small group exercises to review options 1-7 and identify advantages/limitations

7:15 - 7:30 Report findings to the group as a whole, and adjourn

Welcome

Tonight's Goals

Tonight's Three Goals:

- #1. To finalize planning blocks
- #2. To review updated/new handouts and options
- #3. Small group exercise to perform review / markups of DRAFT options and identify advantages / limitations.

Redistricting Study Project Goals

Project Objectives

Why We're Here

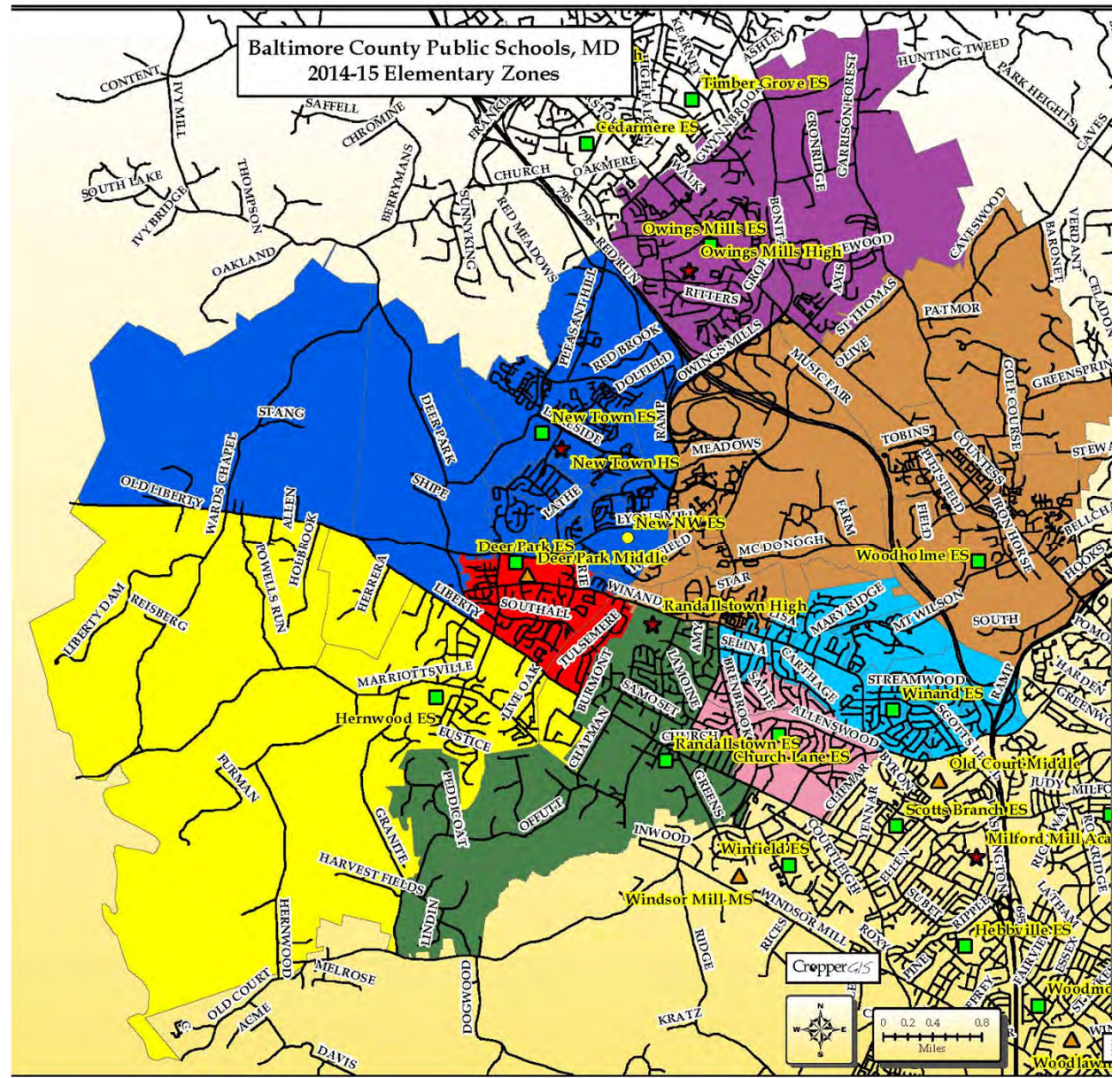
1. Baltimore County Public Schools is building a new elementary school in the northwest area of the district.
 - a) Opening in Fall 2015
 - b) 700-student capacity
2. Schools throughout the region are overcrowded, and redistricting is necessary to balance building utilization and populate the new school.
3. BCPS has organized a committee-based process to work through redistricting options and plans.
 - a) Work will continue through Winter 2015

Project Objectives

Potential Affected Schools

The following schools in the Northwest Area could be affected by the redistricting process:

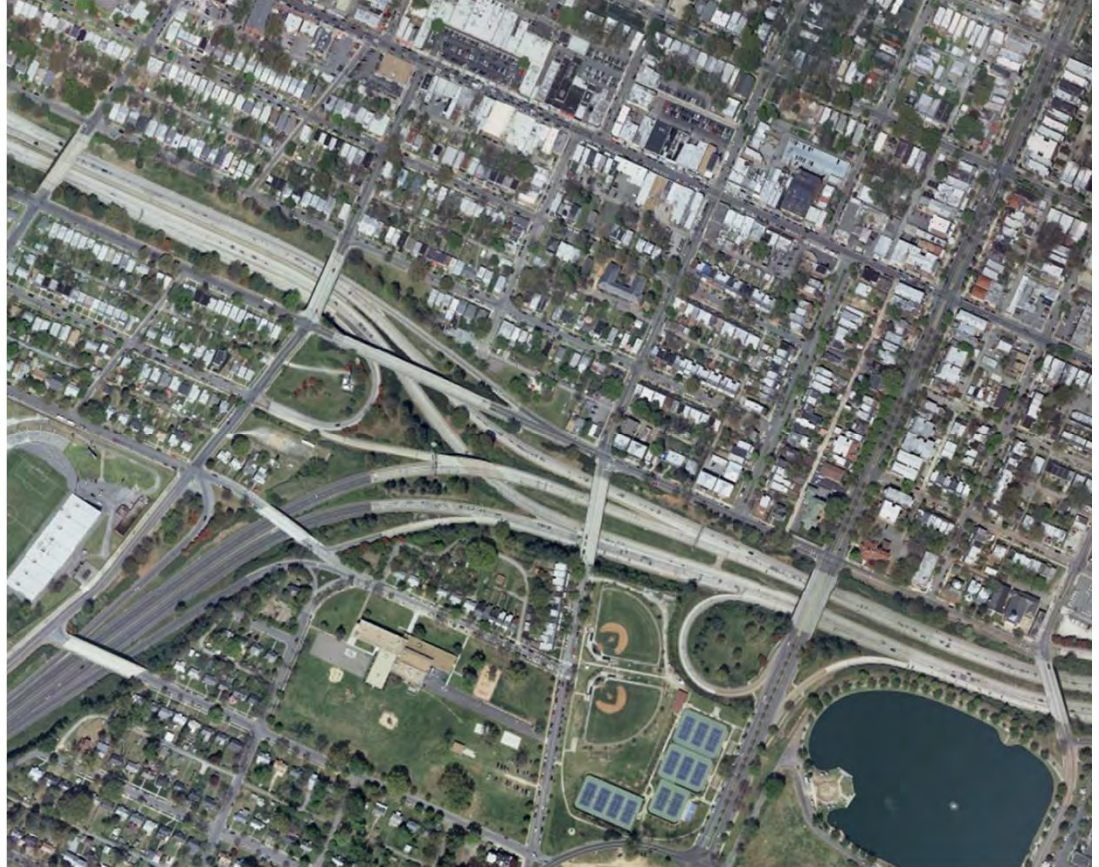
1. Church Lane ES
2. Deer Park ES
3. Hernwood ES
4. New Town ES
5. Owings Mills ES
6. Randallstown ES
7. Winand ES
8. Woodholme ES



Guiding Principles / Criteria

Why We're Here

- ❑ Maintaining the continuity of neighborhoods
- ❑ Maintaining the increased diversity among schools to reflect diversity of the region and the school system
- ❑ Be mindful of the impact of transportation and pedestrian patterns on students
- ❑ Minimize the number of times any one student is reassigned



Guiding Principles / Criteria

Why We're Here

- ❑ Efficient use of capacity in all affected schools
- ❑ Be mindful of long term enrollment and capacity trends and future capital plans
- ❑ Be mindful of the location of feeder school boundaries and continuity of feeder patterns



Updated Information is Ready!

- September 30 data was provided to Cropper GIS, which was mapped and incorporated into GIS
- The Northwest Area is growing!
 - Study area planning block totals between June 30 and September 30 in the NW area increased by 544 students.
 - Study area utilization increased from 89% average to 99% average.
 - Result is not as much flexibility / ability to pro-actively redistrict for future growth.
 - All schools remain near or close to 100% enrollment in options.
 - New enrollment data further reinforces the need to affect the fewest students.
- All handout data was updated with the 2014-15 enrollment.
- Options have been modified to incorporate committee feedback at Meeting 2, as well as to balance enrollment to reflect changes in enrollment.

State Rated Capacity

Study Area School Capacities:

ES School	State Rated Capacity
Church Lane ES	476
Deer Park ES	451
Hernwood ES	415
New Town ES	703
Owings Mills ES	699
Randallstown ES	398
Winand ES	583
Woodholme ES	676
Total	4401

2014-15 School Utilization

Current School utilization reinforces the need

ES School	State Rated Capacity	2014-15 K-5 Grade Enrollment	2014-15 K-5 Live In	K-5 Enrollment Utilization	2014-15 K-5 Live In Utilization	2014-15 Live In Over Capacity
Church Lane ES	476	479	385	101%	81%	-91
Deer Park ES	451	451	417	100%	92%	-34
Hernwood ES	415	407	429	98%	103%	14
New Town ES	703	944	1056	134%	150%	353
Owings Mills ES	699	835	891	119%	127%	192
Randallstown ES	398	373	390	94%	98%	-8
Winand ES	583	504	478	86%	82%	-105
Woodholme ES	676	933	1024	138%	151%	348
Total	4401	4926	5070	112%	115%	669

*Student data as of 9/30/2014

Review of DRAFT Options

Remember that everything is considered DRAFT!

- Nothing is written in stone
- Existing DRAFT Options are subject to change
- New options can/will be created

- Focus isn't on picking the best solution YET, but to openly explore the various options to present to the public for feedback.

*Examination / Review
of
Options Maps*

*Referencing online interactive map
(www.croppermap.com/bcpsnorthwest),
handouts,
and large hard-copy maps*

*Examination / Review
of
Options Tables*

		Utilization Estimates						
ES School	State Rated Capacity	ES Option 1	ES Option 2	ES Option 3	ES Option 4	ES Option 5	ES Option 6	ES Option 7
Church Lane ES	476	480	505	464	489	506	498	489
Deer Park ES	451	454	487	464	456	454	424	464
Hernwood ES	415	429	429	429	429	429	429	429
New Town ES	703	680	678	678	669	669	669	683
New NW ES	700	644	648	680	663	655	685	631
Owings Mills ES	699	718	698	718	718	718	718	718
Randallstown ES	398	399	394	390	390	390	390	390
Winand ES	583	591	560	573	582	574	582	591
Woodholme ES	676	675	671	674	674	675	675	675
Total	5101	5070	5070	5070	5070	5070	5070	5070

*Student data as of 9/30/2014

		Utilization Estimates						
ES School	State Rated Capacity	ES Option 1	ES Option 2	ES Option 3	ES Option 4	ES Option 5	ES Option 6	ES Option 7
Church Lane ES	476	101%	106%	97%	103%	106%	105%	103%
Deer Park ES	451	101%	108%	103%	101%	101%	94%	103%
Hernwood ES	415	103%	103%	103%	103%	103%	103%	103%
New Town ES	703	97%	96%	96%	95%	95%	95%	97%
New NW ES	700	92%	93%	97%	95%	94%	98%	90%
Owings Mills ES	699	103%	100%	103%	103%	103%	103%	103%
Randallstown ES	398	100%	99%	98%	98%	98%	98%	98%
Winand ES	583	101%	96%	98%	100%	98%	100%	101%
Woodholme ES	676	100%	99%	100%	100%	100%	100%	100%
Total	5101	99%	99%	99%	99%	99%	99%	99%

ES School	State Rated Capacity	Over / Under						
		ES Option 1	ES Option 2	ES Option 3	ES Option 4	ES Option 5	ES Option 6	ES Option 7
Church Lane ES	476	4	29	-12	13	30	22	13
Deer Park ES	451	3	36	13	5	3	-27	13
Hernwood ES	415	14	14	14	14	14	14	14
New Town ES	703	-23	-25	-25	-34	-34	-34	-20
New NW ES	700	-56	-52	-20	-37	-45	-15	-69
Owings Mills ES	699	19	-1	19	19	19	19	19
Randallstown ES	398	1	-4	-8	-8	-8	-8	-8
Winand ES	583	8	-23	-10	-1	-9	-1	8
Woodholme ES	676	-1	-5	-2	-2	-1	-1	-1
Total	5101	-31	-31	-31	-31	-31	-31	-31

*Student data as of 9/30/2014

ES School	Percent Minority							
	2014-15 Live In	ES Option 1	ES Option 2	ES Option 3	ES Option 4	ES Option 5	ES Option 6	ES Option 7
Church Lane ES	99%	99%	99%	99%	99%	99%	99%	99%
Deer Park ES	99%	99%	98%	99%	99%	99%	99%	99%
Hernwood ES	97%	97%	97%	97%	97%	97%	97%	97%
New Town ES	92%	90%	91%	90%	91%	91%	91%	90%
New NW ES	NA	95%	94%	96%	94%	94%	95%	95%
Owings Mills ES	92%	91%	91%	91%	91%	91%	91%	91%
Randallstown ES	97%	97%	97%	97%	97%	97%	97%	97%
Winand ES	98%	98%	98%	96%	97%	98%	98%	98%
Woodholme ES	92%	91%	91%	91%	91%	91%	91%	91%
Total	95%	95%	95%	95%	95%	95%	95%	95%

*Student data as of 9/30/2014

ES School	Free-Reduced Lunch Percentages							
	2014-15 Live In	ES Option 1	ES Option 2	ES Option 3	ES Option 4	ES Option 5	ES Option 6	ES Option 7
Church Lane ES	71%	68%	70%	70%	68%	65%	70%	68%
Deer Park ES	65%	63%	59%	60%	63%	63%	64%	60%
Hernwood ES	67%	67%	67%	67%	67%	67%	67%	67%
New Town ES	36%	35%	34%	35%	35%	34%	34%	37%
New NW ES	NA	44%	44%	43%	42%	45%	45%	44%
Owings Mills ES	73%	68%	67%	68%	68%	68%	68%	68%
Randallstown ES	66%	67%	64%	66%	66%	66%	66%	66%
Winand ES	63%	58%	61%	61%	61%	60%	56%	58%
Woodholme ES	51%	63%	65%	64%	64%	63%	63%	63%
Total	58%	58%	58%	58%	58%	58%	58%	58%

*Student data as of 9/30/2014

Option	Total K-5 Live-In Impacted
Option 1	1306
Option 2	1278
Option 3	1194
Option 4	1187
Option 5	1128
Option 6	1195
Option 7	1315
*Student data as of 9/30/2014	

2014-15 ES Zone	ES Option 1 Zone	Total K-5 Students Live In
Church Lane ES	Church Lane ES	315
Church Lane ES	Randallstown ES	70
Deer Park ES	Deer Park ES	417
Hernwood ES	Hernwood ES	429
New Town ES	Deer Park ES	30
New Town ES	New NW ES	346
New Town ES	New Town ES	680
Owings Mills ES	Owings Mills ES	718
Owings Mills ES	Woodholme ES	173
Randallstown ES	Church Lane ES	61
Randallstown ES	Randallstown ES	329
Winand ES	Church Lane ES	104
Winand ES	Winand ES	374
Woodholme ES	Deer Park ES	7
Woodholme ES	New NW ES	298
Woodholme ES	Winand ES	217
Woodholme ES	Woodholme ES	502

2014-15 ES Zone	ES Option 2 Zone	Total K-5 Students Live In
Church Lane ES	Church Lane ES	385
Deer Park ES	Deer Park ES	376
Deer Park ES	Randallstown ES	41
Hernwood ES	Hernwood ES	429
New Town ES	Deer Park ES	111
New Town ES	New NW ES	237
New Town ES	New Town ES	678
New Town ES	Randallstown ES	30
Owings Mills ES	Owings Mills ES	698
Owings Mills ES	Woodholme ES	193
Randallstown ES	Church Lane ES	74
Randallstown ES	Randallstown ES	316
Winand ES	Church Lane ES	46
Winand ES	Winand ES	432
Woodholme ES	New NW ES	411
Woodholme ES	Randallstown ES	7
Woodholme ES	Winand ES	128
Woodholme ES	Woodholme ES	478

2014-15 ES Zone	ES Option 3 Zone	Total K-5 Students Live In
Church Lane ES	Church Lane ES	385
Deer Park ES	Deer Park ES	376
Deer Park ES	New NW ES	41
Hernwood ES	Hernwood ES	429
New Town ES	Deer Park ES	88
New Town ES	New NW ES	290
New Town ES	New Town ES	678
Owings Mills ES	Owings Mills ES	718
Owings Mills ES	Woodholme ES	173
Randallstown ES	Randallstown ES	390
Winand ES	Church Lane ES	79
Winand ES	Winand ES	399
Woodholme ES	New NW ES	349
Woodholme ES	Winand ES	174
Woodholme ES	Woodholme ES	501

2014-15 ES Zone	ES Option 4 Zone	Total K-5 Students Live In
Church Lane ES	Church Lane ES	385
Deer Park ES	Deer Park ES	417
Hernwood ES	Hernwood ES	429
New Town ES	Deer Park ES	39
New Town ES	New NW ES	348
New Town ES	New Town ES	669
Owings Mills ES	Owings Mills ES	718
Owings Mills ES	Woodholme ES	173
Randallstown ES	Randallstown ES	390
Winand ES	Church Lane ES	104
Winand ES	Winand ES	374
Woodholme ES	New NW ES	315
Woodholme ES	Winand ES	208
Woodholme ES	Woodholme ES	501

2014-15 ES Zone	ES Option 5 Zone	Total K-5 Students Live In
Church Lane ES	Church Lane ES	385
Deer Park ES	Deer Park ES	417
Hernwood ES	Hernwood ES	429
New Town ES	Deer Park ES	30
New Town ES	New NW ES	357
New Town ES	New Town ES	669
Owings Mills ES	Owings Mills ES	718
Owings Mills ES	Woodholme ES	173
Randallstown ES	Randallstown ES	390
Winand ES	Church Lane ES	46
Winand ES	Winand ES	432
Woodholme ES	Church Lane ES	75
Woodholme ES	Deer Park ES	7
Woodholme ES	New NW ES	298
Woodholme ES	Winand ES	142
Woodholme ES	Woodholme ES	502

2014-15 ES Zone	ES Option 6 Zone	Total K-5 Students Live In
Church Lane ES	Church Lane ES	385
Deer Park ES	Deer Park ES	417
Hernwood ES	Hernwood ES	429
New Town ES	New NW ES	387
New Town ES	New Town ES	669
Owings Mills ES	Owings Mills ES	718
Owings Mills ES	Woodholme ES	173
Randallstown ES	Randallstown ES	390
Winand ES	Church Lane ES	113
Winand ES	Winand ES	365
Woodholme ES	Deer Park ES	7
Woodholme ES	New NW ES	298
Woodholme ES	Winand ES	217
Woodholme ES	Woodholme ES	502

2014-15 ES Zone	ES Option 7 Zone	Total K-5 Students Live In
Church Lane ES	Church Lane ES	385
Deer Park ES	Deer Park ES	376
Deer Park ES	New NW ES	41
Hernwood ES	Hernwood ES	429
New Town ES	Deer Park ES	88
New Town ES	New NW ES	387
New Town ES	New Town ES	581
Owings Mills ES	Owings Mills ES	718
Owings Mills ES	Woodholme ES	173
Randallstown ES	Randallstown ES	390
Winand ES	Church Lane ES	104
Winand ES	Winand ES	374
Woodholme ES	New NW ES	203
Woodholme ES	New Town ES	102
Woodholme ES	Winand ES	217
Woodholme ES	Woodholme ES	502

Small Group Exercise:

- *Break into 3 groups*
- *Each group will review all options for 45 minutes.*
- *Groups will have flip charts, and will be identifying the advantages & limitations of each scenario*
- *Groups are encouraged to write, circle, highlight any area on the map they feel needs to be addressed.*
- *After each group reviews all options, there will be a discussion around findings / observations*

General Announcements and Upcoming Schedule

October-November 2014: Upcoming Events

Sun	Mon	Tue	Wed	Thu	Fri	Sat
October 12	13	14	15 Committee Meeting 3 5:30 – 7:30 pm	16	17	18
19	20	21	22	23	24	25
26	27	28	29 Committee Meeting 4 5:30 – 7:30 pm	30	31	November 1
2	3	4	5	6	7	8
9	10	11	12 Committee Meeting 5 5:30 – 7:30 pm	13	14	15

**See you next meeting on
October 29, 2014!**

Same time, same place



Baltimore County Public Schools

Community Boundary Change Process and Timeline for the New Northwest Area Elementary School



<p>NW Boundary Committee Meeting 1</p> <p>Wednesday, Sept. 17, 2014 6:00-7:30 p.m.</p> <p>New Town High School Cafeteria</p>	<p>NW Boundary Committee Meeting 2</p> <p>Wednesday, Oct. 1, 2014 6:00-7:30 p.m.</p> <p>New Town High School Cafeteria</p>	<p>NW Boundary Committee Meeting 3</p> <p>Wednesday, Oct. 15, 2014 6:00-7:30 p.m.</p> <p>New Town High School Cafeteria</p>	<p>NW Boundary Committee Meeting 4</p> <p>Wednesday, Oct. 29, 2014 6:00-7:30 p.m.</p> <p>New Town High School Cafeteria</p>	<p>NW Boundary Committee Meeting 5</p> <p>Wednesday, Nov. 12, 2014 6:00-7:30 p.m.</p> <p>*Deer Park Middle Cafeteria</p>	<p>Public Information Session</p> <p>Wednesday, Nov. 19, 2014 7:00-8:00 p.m.</p> <p>New Town HS Auditorium</p>	<p>NW Boundary Committee Meeting 6</p> <p>Wednesday, Dec. 10, 2014 6:00-7:30 p.m.</p> <p>*Deer Park Middle Cafeteria</p>	<p>Recommendation to Board</p> <p>Tuesday, February 3, 2015 7:00 p.m. ESS Building</p>
<ul style="list-style-type: none"> • 5:30-6:00 p.m. Light dinner for committee members • 6:00 p.m. Start mtg • Introduction of committee members • Introduction of process & timeline • Criteria for decision making • SWOT Analysis • Background Report Overview <ul style="list-style-type: none"> -Schools Considered -Enrollments -Projections -Capacities -Geography -Demographics -Development 	<ul style="list-style-type: none"> • 5:30-6:00 p.m. Light dinner for committee members • 6:00 p.m. Start mtg • Recap Background report and Q/A. • Review planning blocks and baseline options • Small group discussions & review of baseline options 	<ul style="list-style-type: none"> • 5:30-6:00 p.m. Light dinner for committee members • 6:00 p.m. Start mtg • Provide updated information/data and Q/A on process to date. • Develop and evaluate scenarios • Consensus building exercises 	<ul style="list-style-type: none"> • 5:30-6:00 p.m. Light dinner for committee members • 6:00 p.m. Start mtg • Develop & evaluate various scenarios • Consensus building exercises around various options (if necessary) • Select viable scenarios for Public Information Session 	<ul style="list-style-type: none"> • 5:30-6:00 p.m. Light dinner for committee members • 6:00 p.m. Start mtg • Review proposed options for Public Information Session • Discuss logistics for Public Information Session <p style="text-align: center;">**SNOW DATE** Thursday, Nov. 13th 5:30-7:30 p.m. <i>New Town HS</i></p>	<ul style="list-style-type: none"> • 6:30 p.m. Arrival of committee and review of process • 7:00 p.m. Welcome general public • Explanation of process • Presentation of data • Break to view large maps on easels • Committee members facilitate discussion around maps • Public encouraged to participate in online survey; online access available until 7pm on Nov. 26, 2014 <p style="text-align: center;">**SNOW DATE** Thursday, Nov. 20th 5:30 - 7:30 p.m. <i>New Town HS Cafe</i></p>	<ul style="list-style-type: none"> • 5:30-6:00 p.m. Light dinner available for committee members • 6:00 p.m. Start mtg • Review Public Information Session feedback, and suggested changes to options per feedback, if any. • Select Scenario to be Recommended to the Board of Ed. <p style="text-align: center;">**SNOW DATE** Thursday, Dec. 11th 5:30 - 7:30 p.m. <i>New Town HS</i></p>	<p>Board Hearing 10+ Days Prior to Decision</p> <p>Tuesday, February 10, 2015 7:00 p.m. New Town High School Auditorium</p> <p style="text-align: center;">**SNOW DATE** Thursday, February 12, 2015</p>
<div style="display: flex; align-items: center; gap: 10px;"> <div style="width: 20px; height: 20px; background-color: #c8e6c9; border: 1px solid black;"></div> <p>Mtgs of NW Boundary Committee members; general public may attend to observe</p> </div> <div style="display: flex; align-items: center; gap: 10px; margin-top: 10px;"> <div style="width: 20px; height: 20px; background-color: #ffcc80; border: 1px solid black;"></div> <p>Special mtgs open to the general public; attendance & participation encouraged</p> </div> <div style="display: flex; align-items: center; gap: 10px; margin-top: 10px;"> <div style="width: 20px; height: 20px; background-color: #3f51b5; color: white; border: 1px solid black; display: flex; align-items: center; justify-content: center;">BOE</div> <p>Regular Board of Education meetings; general public welcome to attend</p> </div>							<p>Board of Education Decision</p> <p>Tuesday, March 3, 2015</p>
<p>BCPS Office of Strategic Planning - Timeline UPDATED 9/9/14</p>							

*** Please note different locations for Meetings 5 & 6**

**** Please note Snow Dates for Meeting 5, Public Information Session, Meeting 6, and the February 2015 BOE Hearing**