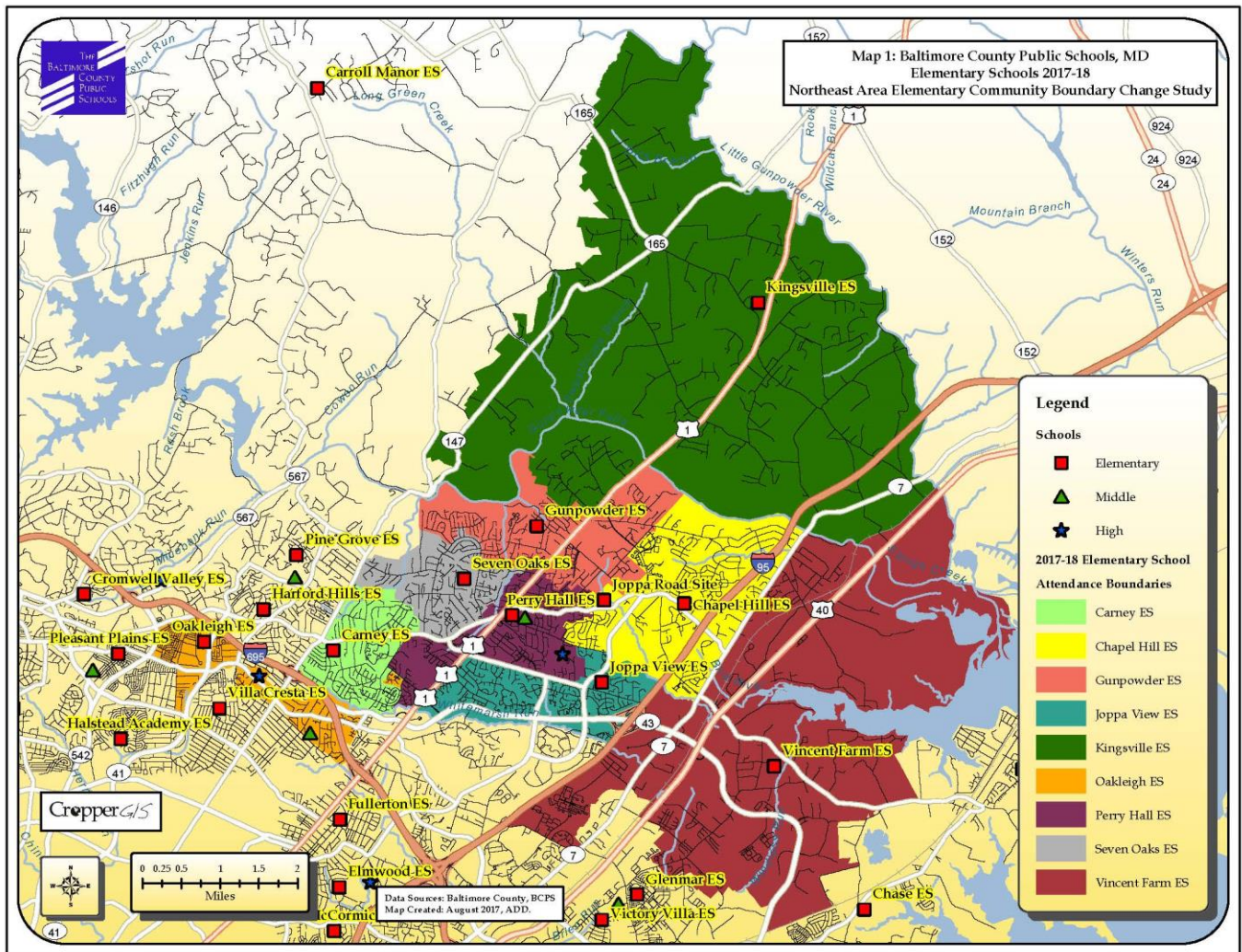


# Baltimore County Public Schools Northeast Area Elementary Community Boundary Change Study

## Public Information Session Survey Results



**Online Survey Results**

Introduction

Approximately 150 community members attended the 10/25/17 public information session, hosted by the Northeast Area Elementary Community Boundary Change Study committee and BCPS staff. Cropper GIS facilitated the meeting and shared information about the committee goals, guidelines, and process and introduced three options developed by the committee that help to meet the boundary study goals. The public then participated in a gallery walk where each option was displayed on large maps along with data tables. Staff and committee members answered questions and heard input from the public as they viewed and discussed the three options under consideration. Computers were available to attendees during and after the gallery walk to facilitate the public’s participation in related online survey, and the surveys were made available in multiple languages.

Online Survey

Four Hundred and Sixty-Eight respondents participated in the online survey that was available to the public from 10/25/17 until midnight on 11/8/17. The survey asked respondents to provide their thoughts, observations, and overall attitude toward the three options that were presented at the 10/25/17 information session and posted on the BCPS Web site. The data – aggregated, summarized and reported below – is intended to be used by the Boundary Change Study Committee as a tool to help facilitate their deliberation and decision-making regarding the boundary change study. The results of the survey alone do not constitute a decision regarding a boundary change and are not intended to be used in decision-making process independent of other information, discussion, and deliberation.

Respondents by Survey Language

*Table 1: Survey Language of Respondents*

Survey Language	Responses	Percentage of Total Responses
Arabic	1	0.2%
English	465	99.4%
Spanish	1	0.2%
Nepali	1	0.2%
<b>Total</b>	<b>468</b>	

Response to “In which elementary school boundary do you currently live?”

*Table 2: Respondent Live-In Elementary Boundary*

Live-In Elementary Boundary	Responses	Percentage of Total Responses
Carney ES	32	7.3%
Chapel Hill ES	108	24.5%
Gunpowder ES	83	18.8%
Joppa View ES	20	4.5%
Kingsville ES	14	3.2%
Oakleigh ES	4	0.9%
Perry Hall ES	35	7.9%
Seven Oaks ES	19	4.3%
Vincent Farm ES	124	28.1%
Other (Please specify):	2	0.5%
<b>Total</b>	<b>441</b>	

Option Attitude Summary Tables for All Submitted Comments

The following provides a general summary on the community’s overall attitude related to the Options.

Summary of Overall Opinion for Each Option

The table below shows the results to the question when asked ‘What is your overall opinion towards an Option?’

Table 3: Summary of Overall Opinion for Each Option

Overall Opinion	Option A		Option B		Option C	
	n	%	n	%	n	%
Strongly in favor	64	18.7%	113	37.4%	94	32.0%
Somewhat in favor	60	17.5%	38	12.6%	51	17.3%
Neutral	48	14.0%	41	13.6%	49	16.7%
Somewhat opposed	49	14.3%	21	7.0%	21	7.1%
Strongly opposed	122	35.6%	89	29.5%	79	26.9%
<b>Total</b>	<b>343</b>	<b>100.0%</b>	<b>302</b>	<b>100.0%</b>	<b>294</b>	<b>100.0%</b>

Overall Opinions for Each Option by Respondent Live-In Elementary Boundary

The tables below show the results to the question when asked ‘What is your overall opinion towards an Option?’ and are broken out by the Respondent’s Live-In Elementary Boundary.

Table 4: Summary of Overall Opinion for Option A by Live-In Elementary Boundary

Live-In Elementary Boundary	Option A											
	Strongly opposed		Somewhat opposed		Neutral		Somewhat in favor		Strongly in favor		Total	
	n	%	n	%	n	%	n	%	n	%	n	%
Carney ES	12	54.5%	2	9.1%	4	18.2%	1	4.5%	3	13.6%	22	100.0%
Chapel Hill ES	60	64.5%	15	16.1%	3	3.2%	14	15.1%	1	1.1%	93	100.0%
Gunpowder ES	18	28.6%	13	20.6%	12	19.0%	10	15.9%	10	15.9%	63	100.0%
Joppa View ES	8	42.1%	0	0.0%	0	0.0%	2	10.5%	9	47.4%	19	100.0%
Kingsville ES	1	14.3%	0	0.0%	5	71.4%	1	14.3%	0	0.0%	7	100.0%
Oakleigh ES	0	0.0%	0	0.0%	1	100.0%	0	0.0%	0	0.0%	1	100.0%
Perry Hall ES	4	12.9%	2	6.5%	0	0.0%	10	32.3%	15	48.4%	31	100.0%
Seven Oaks ES	5	35.7%	4	28.6%	4	28.6%	0	0.0%	1	7.1%	14	100.0%
Vincent Farm ES	13	14.3%	13	14.3%	19	20.9%	21	23.1%	25	27.5%	91	100.0%
Other (Please specify):	1	50.0%	0	0.0%	0	0.0%	1	50.0%	0	0.0%	2	100.0%
<b>Total</b>	<b>122</b>	<b>35.6%</b>	<b>49</b>	<b>14.3%</b>	<b>48</b>	<b>14.0%</b>	<b>60</b>	<b>17.5%</b>	<b>64</b>	<b>18.7%</b>	<b>343</b>	<b>100.0%</b>

Overall Opinions for Each Option by Respondent Live-In Elementary Boundary (Continued)

Table 5: Summary of Overall Opinion for Option B by Live-In Elementary Boundary

Live-In Elementary Boundary	Option B											
	Strongly opposed		Somewhat opposed		Neutral		Somewhat in favor		Strongly in favor		Total	
	n	%	n	%	n	%	n	%	n	%	n	%
Carney ES	9	47.4%	1	5.3%	2	10.5%	1	5.3%	6	31.6%	19	100.0%
Chapel Hill ES	46	56.1%	8	9.8%	4	4.9%	3	3.7%	21	25.6%	82	100.0%
Gunpowder ES	9	16.4%	7	12.7%	14	25.5%	14	25.5%	11	20.0%	55	100.0%
Joppa View ES	2	12.5%	1	6.3%	3	18.8%	2	12.5%	8	50.0%	16	100.0%
Kingsville ES	0	0.0%	0	0.0%	3	50.0%	2	33.3%	1	16.7%	6	100.0%
Oakleigh ES	0	0.0%	0	0.0%	1	100.0%	0	0.0%	0	0.0%	1	100.0%
Perry Hall ES	10	35.7%	3	10.7%	1	3.6%	2	7.1%	12	42.9%	28	100.0%
Seven Oaks ES	4	30.8%	1	7.7%	5	38.5%	3	23.1%	0	0.0%	13	100.0%
Vincent Farm ES	7	8.8%	0	0.0%	8	10.0%	11	13.8%	54	67.5%	80	100.0%
Other (Please specify):	2	100.0%	0	0.0%	0	0.0%	0	0.0%	0	0.0%	2	100.0%
<b>Total</b>	<b>89</b>	<b>29.5%</b>	<b>21</b>	<b>7.0%</b>	<b>41</b>	<b>13.6%</b>	<b>38</b>	<b>12.6%</b>	<b>113</b>	<b>37.4%</b>	<b>302</b>	<b>100.0%</b>

Table 6: Summary of Overall Opinion for Option C by Live-In Elementary Boundary

Live-In Elementary Boundary	Option C											
	Strongly opposed		Somewhat opposed		Neutral		Somewhat in favor		Strongly in favor		Total	
	n	%	n	%	n	%	n	%	n	%	n	%
Carney ES	12	63.2%	1	5.3%	3	15.8%	0	0.0%	3	15.8%	19	100.0%
Chapel Hill ES	43	55.1%	5	6.4%	3	3.8%	9	11.5%	18	23.1%	78	100.0%
Gunpowder ES	1	2.0%	4	7.8%	10	19.6%	6	11.8%	30	58.8%	51	100.0%
Joppa View ES	5	31.3%	2	12.5%	0	0.0%	0	0.0%	9	56.3%	16	100.0%
Kingsville ES	0	0.0%	0	0.0%	4	57.1%	2	28.6%	1	14.3%	7	100.0%
Oakleigh ES	0	0.0%	0	0.0%	1	100.0%	0	0.0%	0	0.0%	1	100.0%
Perry Hall ES	9	32.1%	3	10.7%	1	3.6%	3	10.7%	12	42.9%	28	100.0%
Seven Oaks ES	3	25.0%	1	8.3%	5	41.7%	3	25.0%	0	0.0%	12	100.0%
Vincent Farm ES	5	6.3%	5	6.3%	21	26.3%	28	35.0%	21	26.3%	80	100.0%
Other (Please specify):	1	50.0%	0	0.0%	1	50.0%	0	0.0%	0	0.0%	2	100.0%
<b>Total</b>	<b>79</b>	<b>26.9%</b>	<b>21</b>	<b>7.1%</b>	<b>49</b>	<b>16.7%</b>	<b>51</b>	<b>17.3%</b>	<b>94</b>	<b>32.0%</b>	<b>294</b>	<b>100.0%</b>

Reasons for Favoring an Option Summary Table

The table below shows the responses to 'You indicated that you are in favor of an Option. What is your primary reason?'

Table 7: Summary of Reasons for Favoring an Option

Reason for Favoring an Option	Option A		Option B		Option C	
	n	%	n	%	n	%
Maintains or increases diversity	8	6.8%	6	4.1%	6	4.1%
Maintains existing neighborhoods	24	20.5%	34	23.0%	42	29.0%
Does not disrupt current walkers, changes bus ridership for students	3	2.6%	4	2.7%	3	2.1%
Addresses current overcrowding	63	53.8%	79	53.4%	60	41.4%
Maintains school feeder patterns	7	6.0%	6	4.1%	9	6.2%
Addresses long term enrollment needs	12	10.3%	19	12.8%	25	17.2%
<b>Total</b>	<b>117</b>	<b>100.0%</b>	<b>148</b>	<b>100.0%</b>	<b>145</b>	<b>100.0%</b>

Reasons for Favoring an Option Summary Table by Respondent Live-In Elementary Boundary

The table below shows the responses to 'You indicated that you are in favor of an Option. What is your primary reason?' and are broken out by the Respondent's Live-In Elementary Boundary.

Table 8: Summary of Reasons for Favoring Option A by Live-In Elementary Boundary

Live-In Elementary Boundary	Option A													
	Addresses long term enrollment needs		Maintains school feeder patterns		Addresses current overcrowding		Does not disrupt current walkers, changes bus ridership for students		Maintains existing neighborhoods		Maintains or increases diversity		Total	
	n	%	n	%	n	%	n	%	n	%	n	%	n	%
Carney ES	0	0.0%	0	0.0%	1	25.0%	1	25.0%	2	50.0%	0	0.0%	4	100.0%
Chapel Hill ES	2	13.3%	0	0.0%	5	33.3%	1	6.7%	6	40.0%	1	6.7%	15	100.0%
Gunpowder ES	2	11.8%	1	5.9%	7	41.2%	0	0.0%	6	35.3%	1	5.9%	17	100.0%
Joppa View ES	0	0.0%	1	10.0%	6	60.0%	0	0.0%	1	10.0%	2	20.0%	10	100.0%
Kingsville ES	0	0.0%	0	0.0%	0	0.0%	0	0.0%	1	100.0%	0	0.0%	1	100.0%
Oakleigh ES	0	0.0%	0	0.0%	0	0.0%	0	0.0%	0	0.0%	0	0.0%	0	0.0%
Perry Hall ES	3	13.0%	0	0.0%	14	60.9%	1	4.3%	3	13.0%	2	8.7%	23	100.0%
Seven Oaks ES	0	0.0%	0	0.0%	1	100.0%	0	0.0%	0	0.0%	0	0.0%	1	100.0%
Vincent Farm ES	5	11.1%	4	8.9%	29	64.4%	0	0.0%	5	11.1%	2	4.4%	45	100.0%
Other (Please specify):	0	0.0%	1	100.0%	0	0.0%	0	0.0%	0	0.0%	0	0.0%	1	100.0%
<b>Total</b>	<b>12</b>	<b>10.3%</b>	<b>7</b>	<b>6.0%</b>	<b>63</b>	<b>53.8%</b>	<b>3</b>	<b>2.6%</b>	<b>24</b>	<b>20.5%</b>	<b>8</b>	<b>6.8%</b>	<b>117</b>	<b>100.0%</b>

Reasons for Favoring an Option Summary Table by Respondent Live-In Elementary Boundary (Continued)

Table 9: Summary of Reasons for Favoring Option B by Live-In Elementary Boundary

Live-In Elementary Boundary	Option B													
	Addresses long term enrollment needs		Maintains school feeder patterns		Addresses current overcrowding		Does not disrupt current walkers, changes bus ridership for students		Maintains existing neighborhoods		Maintains or increases diversity		Total	
	n	%	n	%	n	%	n	%	n	%	n	%	n	%
Carney ES	0	0.0%	0	0.0%	1	14.3%	2	28.6%	4	57.1%	0	0.0%	7	100.0%
Chapel Hill ES	5	20.8%	1	4.2%	12	50.0%	0	0.0%	5	20.8%	1	4.2%	24	100.0%
Gunpowder ES	3	13.0%	1	4.3%	12	52.2%	1	4.3%	6	26.1%	0	0.0%	23	100.0%
Joppa View ES	0	0.0%	1	10.0%	1	10.0%	0	0.0%	6	60.0%	2	20.0%	10	100.0%
Kingsville ES	0	0.0%	0	0.0%	2	66.7%	0	0.0%	1	33.3%	0	0.0%	3	100.0%
Oakleigh ES	0	0.0%	0	0.0%	0	0.0%	0	0.0%	0	0.0%	0	0.0%	0	0.0%
Perry Hall ES	1	7.1%	0	0.0%	8	57.1%	0	0.0%	5	35.7%	0	0.0%	14	100.0%
Seven Oaks ES	0	0.0%	0	0.0%	1	50.0%	0	0.0%	1	50.0%	0	0.0%	2	100.0%
Vincent Farm ES	10	15.4%	3	4.6%	42	64.6%	1	1.5%	6	9.2%	3	4.6%	65	100.0%
Other (Please specify):	0	0.0%	0	0.0%	0	0.0%	0	0.0%	0	0.0%	0	0.0%	0	0.0%
<b>Total</b>	<b>19</b>	<b>12.8%</b>	<b>6</b>	<b>4.1%</b>	<b>79</b>	<b>53.4%</b>	<b>4</b>	<b>2.7%</b>	<b>34</b>	<b>23.0%</b>	<b>6</b>	<b>4.1%</b>	<b>148</b>	<b>100.0%</b>

Table 10: Summary of Reasons for Favoring Option C by Live-In Elementary Boundary

Live-In Elementary Boundary	Option C													
	Addresses long term enrollment needs		Maintains school feeder patterns		Addresses current overcrowding		Does not disrupt current walkers, changes bus ridership for students		Maintains existing neighborhoods		Maintains or increases diversity		Total	
	n	%	n	%	n	%	n	%	n	%	n	%	n	%
Carney ES	0	0.0%	0	0.0%	1	33.3%	1	33.3%	1	33.3%	0	0.0%	3	100.0%
Chapel Hill ES	8	29.6%	2	7.4%	7	25.9%	1	3.7%	8	29.6%	1	3.7%	27	100.0%
Gunpowder ES	5	13.9%	3	8.3%	16	44.4%	1	2.8%	10	27.8%	1	2.8%	36	100.0%
Joppa View ES	0	0.0%	0	0.0%	1	11.1%	0	0.0%	8	88.9%	0	0.0%	9	100.0%
Kingsville ES	1	33.3%	0	0.0%	1	33.3%	0	0.0%	1	33.3%	0	0.0%	3	100.0%
Oakleigh ES	0	0.0%	0	0.0%	0	0.0%	0	0.0%	0	0.0%	0	0.0%	0	0.0%
Perry Hall ES	4	26.7%	0	0.0%	2	13.3%	0	0.0%	8	53.3%	1	6.7%	15	100.0%
Seven Oaks ES	0	0.0%	1	33.3%	1	33.3%	0	0.0%	1	33.3%	0	0.0%	3	100.0%
Vincent Farm ES	7	14.3%	3	6.1%	31	63.3%	0	0.0%	5	10.2%	3	6.1%	49	100.0%
Other (Please specify):	0	0.0%	0	0.0%	0	0.0%	0	0.0%	0	0.0%	0	0.0%	0	0.0%
<b>Total</b>	<b>25</b>	<b>17.2%</b>	<b>9</b>	<b>6.2%</b>	<b>60</b>	<b>41.4%</b>	<b>3</b>	<b>2.1%</b>	<b>42</b>	<b>29.0%</b>	<b>6</b>	<b>4.1%</b>	<b>145</b>	<b>100.0%</b>

Primary Concerns Summary Table

The table below shows what the primary concerns were for those that *opposed* a plan.

Table 11: Summary of Primary Concern for Each Option

Primary Concern	Option A		Option B		Option C	
	n	%	n	%	n	%
Does not support maintaining or increasing diversity	10	6.1%	38	34.9%	6	6.0%
Divides existing neighborhoods	31	18.9%	17	15.6%	14	14.0%
Is disruptive to current walkers, changes bus ridership for students	11	6.7%	13	11.9%	9	9.0%
Does not address current overcrowding	46	28.0%	20	18.3%	33	33.0%
Is disruptive to school feeder patterns	11	6.7%	6	5.5%	4	4.0%
Does not address long term enrollment needs	55	33.5%	15	13.8%	34	34.0%
<b>Total</b>	<b>164</b>	<b>100.0%</b>	<b>109</b>	<b>100.0%</b>	<b>100</b>	<b>100.0%</b>

Primary Concerns Summary Table by Respondent's Live-In Elementary Boundary

The tables below shows what the primary concerns were for those that *opposed* a plan and are broken out by the Respondent's Live-In Elementary Boundary.

Table 12: Summary of Primary Concerns Option A by Live-In Elementary Boundary

Live-In Elementary Boundary	Option A												Total	
	Does not address long term enrollment needs		Is disruptive to school feeder patterns		Does not address current overcrowding		Is disruptive to current walkers, changes bus ridership for students		Divides existing neighborhoods		Does not support maintaining or increasing diversity			
	n	%	n	%	n	%	n	%	n	%	n	%	n	%
Carney ES	2	14.3%	0	0.0%	9	64.3%	1	7.1%	2	14.3%	0	0.0%	14	100.0%
Chapel Hill ES	37	50.7%	5	6.8%	14	19.2%	2	2.7%	9	12.3%	6	8.2%	73	100.0%
Gunpowder ES	6	21.4%	3	10.7%	9	32.1%	2	7.1%	5	17.9%	3	10.7%	28	100.0%
Joppa View ES	0	0.0%	0	0.0%	1	12.5%	1	12.5%	6	75.0%	0	0.0%	8	100.0%
Kingsville ES	1	100.0%	0	0.0%	0	0.0%	0	0.0%	0	0.0%	0	0.0%	1	100.0%
Oakleigh ES	0	0.0%	0	0.0%	0	0.0%	0	0.0%	0	0.0%	0	0.0%	0	0.0%
Perry Hall ES	1	20.0%	0	0.0%	1	20.0%	2	40.0%	0	0.0%	1	20.0%	5	100.0%
Seven Oaks ES	0	0.0%	1	11.1%	1	11.1%	2	22.2%	5	55.6%	0	0.0%	9	100.0%
Vincent Farm ES	8	32.0%	2	8.0%	10	40.0%	1	4.0%	4	16.0%	0	0.0%	25	100.0%
Other (Please specify):	0	0.0%	0	0.0%	1	100.0%	0	0.0%	0	0.0%	0	0.0%	1	100.0%
<b>Total</b>	<b>55</b>	<b>33.5%</b>	<b>11</b>	<b>6.7%</b>	<b>46</b>	<b>28.0%</b>	<b>11</b>	<b>6.7%</b>	<b>31</b>	<b>18.9%</b>	<b>10</b>	<b>6.1%</b>	<b>164</b>	<b>100.0%</b>

Table 13: Summary of Primary Concerns Option B by Live-In Elementary Boundary

Live-In Elementary Boundary	Option B												Total	
	Does not address long term enrollment needs		Is disruptive to school feeder patterns		Does not address current overcrowding		Is disruptive to current walkers, changes bus ridership for students		Divides existing neighborhoods		Does not support maintaining or increasing diversity			
	n	%	n	%	n	%	n	%	n	%	n	%	n	%
Carney ES	1	10.0%	0	0.0%	6	60.0%	2	20.0%	1	10.0%	0	0.0%	10	100.0%
Chapel Hill ES	7	13.2%	1	1.9%	3	5.7%	2	3.8%	9	17.0%	31	58.5%	53	100.0%
Gunpowder ES	2	12.5%	4	25.0%	3	18.8%	3	18.8%	2	12.5%	2	12.5%	16	100.0%
Joppa View ES	0	0.0%	0	0.0%	3	100.0%	0	0.0%	0	0.0%	0	0.0%	3	100.0%
Kingsville ES	0	0.0%	0	0.0%	0	0.0%	0	0.0%	0	0.0%	0	0.0%	0	0.0%
Oakleigh ES	0	0.0%	0	0.0%	0	0.0%	0	0.0%	0	0.0%	0	0.0%	0	0.0%
Perry Hall ES	4	30.8%	0	0.0%	3	23.1%	3	23.1%	2	15.4%	1	7.7%	13	100.0%
Seven Oaks ES	0	0.0%	1	20.0%	0	0.0%	2	40.0%	1	20.0%	1	20.0%	5	100.0%
Vincent Farm ES	1	14.3%	0	0.0%	0	0.0%	1	14.3%	2	28.6%	3	42.9%	7	100.0%
Other (Please specify):	0	0.0%	0	0.0%	2	100.0%	0	0.0%	0	0.0%	0	0.0%	2	100.0%
<b>Total</b>	<b>15</b>	<b>13.8%</b>	<b>6</b>	<b>5.5%</b>	<b>20</b>	<b>18.3%</b>	<b>13</b>	<b>11.9%</b>	<b>17</b>	<b>15.6%</b>	<b>38</b>	<b>34.9%</b>	<b>109</b>	<b>100.0%</b>

Table 14: Summary of Primary Concerns Option C by Live-In Elementary Boundary

Live-In Elementary Boundary	Option C												Total	
	Does not address long term enrollment needs		Is disruptive to school feeder patterns		Does not address current overcrowding		Is disruptive to current walkers, changes bus ridership for students		Divides existing neighborhoods		Does not support maintaining or increasing diversity			
	n	%	n	%	n	%	n	%	n	%	n	%	n	%
Carney ES	1	7.7%	0	0.0%	7	53.8%	2	15.4%	3	23.1%	0	0.0%	13	100.0%
Chapel Hill ES	27	56.3%	3	6.3%	8	16.7%	3	6.3%	4	8.3%	3	6.3%	48	100.0%
Gunpowder ES	0	0.0%	0	0.0%	1	20.0%	2	40.0%	2	40.0%	0	0.0%	5	100.0%
Joppa View ES	0	0.0%	0	0.0%	5	71.4%	0	0.0%	1	14.3%	1	14.3%	7	100.0%
Kingsville ES	0	0.0%	0	0.0%	0	0.0%	0	0.0%	0	0.0%	0	0.0%	0	0.0%
Oakleigh ES	0	0.0%	0	0.0%	0	0.0%	0	0.0%	0	0.0%	0	0.0%	0	0.0%
Perry Hall ES	2	16.7%	0	0.0%	8	66.7%	0	0.0%	1	8.3%	1	8.3%	12	100.0%
Seven Oaks ES	0	0.0%	0	0.0%	1	25.0%	1	25.0%	1	25.0%	1	25.0%	4	100.0%
Vincent Farm ES	4	40.0%	1	10.0%	2	20.0%	1	10.0%	2	20.0%	0	0.0%	10	100.0%
Other (Please specify):	0	0.0%	0	0.0%	1	100.0%	0	0.0%	0	0.0%	0	0.0%	1	100.0%
<b>Total</b>	<b>34</b>	<b>34.0%</b>	<b>4</b>	<b>4.0%</b>	<b>33</b>	<b>33.0%</b>	<b>9</b>	<b>9.0%</b>	<b>14</b>	<b>14.0%</b>	<b>6</b>	<b>6.0%</b>	<b>100</b>	<b>100.0%</b>

Conclusion

To summarize, the data presented in this summary report will be utilized as a tool to help the committee prioritize the options. However, the results of the community forum should not be the only deciding factor when reviewing the options due to the uneven distribution of respondents across the district.

Additional Comments

Respondents also provided comments regarding each option. Those comments can be read in their entirety in the Exhibits that accompany this report.

Exhibit #1 - Option #A

Exhibit #2 - Option #B

Exhibit #3 - Option #C